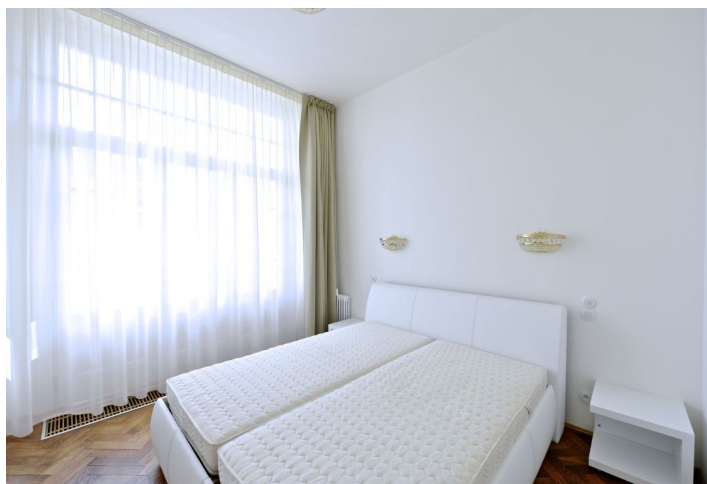




Apartment One-bedroom (2+kk)

Sold

73 m², Prague 1, Staré Město, Maiselova





Apartment One-bedroom (2+kk)

Sold73 m², Prague 1, Staré Město, Maiselova

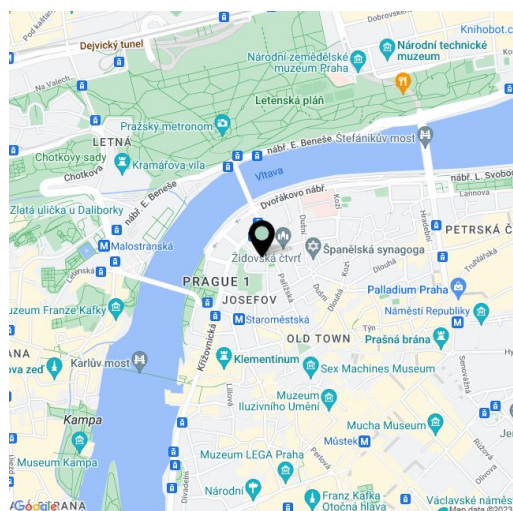
Total area	73 m ²
Parking	-
Cellar	Yes
PENB	G
Reference number	18651

Completely newly renovated, fully furnished apartment with Art Deco elements located on the 3rd floor of a completely reconstructed building from the 20's with a lift, just a few steps from Charles Bridge and Old Town Square, and only a minute from a tram and subway station.

The apartment consists of an entrance hall, a sunny living room with fully fitted kitchen including washing machine and dryer, bedroom with access to a changing room and **indoor winter garden with a nice view of the park and synagogue** and a bathroom with bathtub and toilet. **Top quality materials and equipment.** Wooden flooring, tiles in the bathroom, new wooden casement windows, crystal chandeliers. **Preserved original features** such as ornate stucco ceilings, double swing glass door, wooden frames around doors and windows.

Very prestigious location in the heart of Prague, **close to the famous Paris Street with luxury shops.** All amenities, cafés, bars, restaurants and cultural opportunities nearby. Excellent public transport connection, just a two minute walk from the subway line A station - Staroměstská.

Interior 73 m², cellar 2 m².



* Area of the unit according to the Civil Code. The area consists of the sum total area of the entire unit bounded by perimeter walls.



Apartment One-bedroom (2+kk)

Sold

73 m², Prague 1, Staré Město, Maiselova

