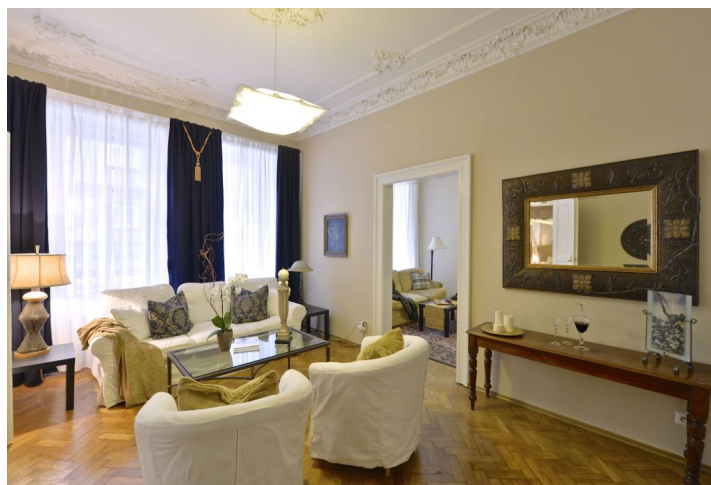




Apartment Two-bedroom (3+1)

€ 796 | CZK 19 900

80 m², Prague 2, Nové Město, Gorazdova





Apartment Two-bedroom (3+1)

€ 796 | CZK 19 900

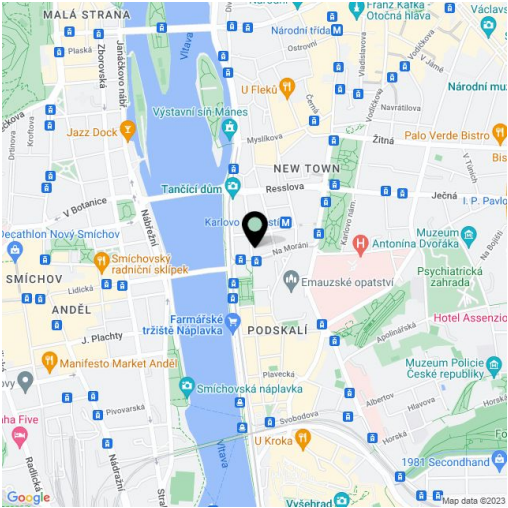
80 m², Prague 2, Nové Město, Gorazdova

Total area	80 m²
Parking	Nearby garage parking can be arranged.
Garage	Yes
Cellar	-
PENB	G
Reference number	18744
Available from	Immediately

Meticulously refurbished and furnished 2-bedroom flat with lots of preserved original details situated on the first floor of a renovated traditional residential building with a lift. Located in a quiet street within walking distance of the Vltava riverbank and Palackého Square with metro station and multiple tram links, within quick reach of the city center, in close vicinity of the Vyšehrad Castle, with full amenities in the area.

The stylish interior features three rooms interconnected by double doors and furnished as living room, bedroom and dining room, all facing the quiet street. There is a fully fitted kitchen with a pantry, shower bathroom, toilet, and entry hall.

High ceilings, stucco ornaments, large windows, solid wood parquet floors, washer/dryer, microwave oven, audio entry phone. Parking can be arranged in a nearby public garage at an extra cost. Common building charges and utilities approximately CZK 4000 per month.



* Area of the unit according to the Civil Code. The area consists of the sum total area of the entire unit bounded by perimeter walls.