



Apartment Two-bedroom (3+kk)

Rented

70 m², Prague 5, Smíchov, V Lesíčku





Apartment Two-bedroom (3+kk)

Rented

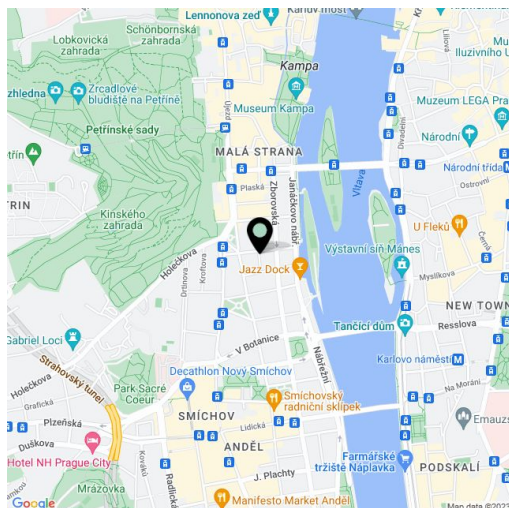
70 m², Prague 5, Smíchov, V Lesíčku

Total area	75 m ²
Floor area*	70 m ²
Balcony	5 m ²
Parking	-
Cellar	-
PENB	G
Reference number	18749
Available from	Immediately

Fully furnished 2-bedroom flat with a 5 m² balcony situated on the 3rd floor of a completely refurbished century-old building with an elegant classical facade, transformed into a city residence. The building is located near the Prague Castle, Charles Bridge and some of Prague's finest bars and restaurants on one side, and close to Anděl, one of the fastest developing modern areas in the city, on the other.

There is living room with fully fitted kitchen and access to the balcony facing the green courtyard, bathroom with bath tub, separate toilet, and laundry room.

Features include high ceilings, oak flooring, windows and doors that replicate the originals, TV, Internet, telephone, satellite connection, audio entry phone, Miele appliances incl. washer, dryer, and dishwasher. Lift. Common building charges and utilities are paid extra.



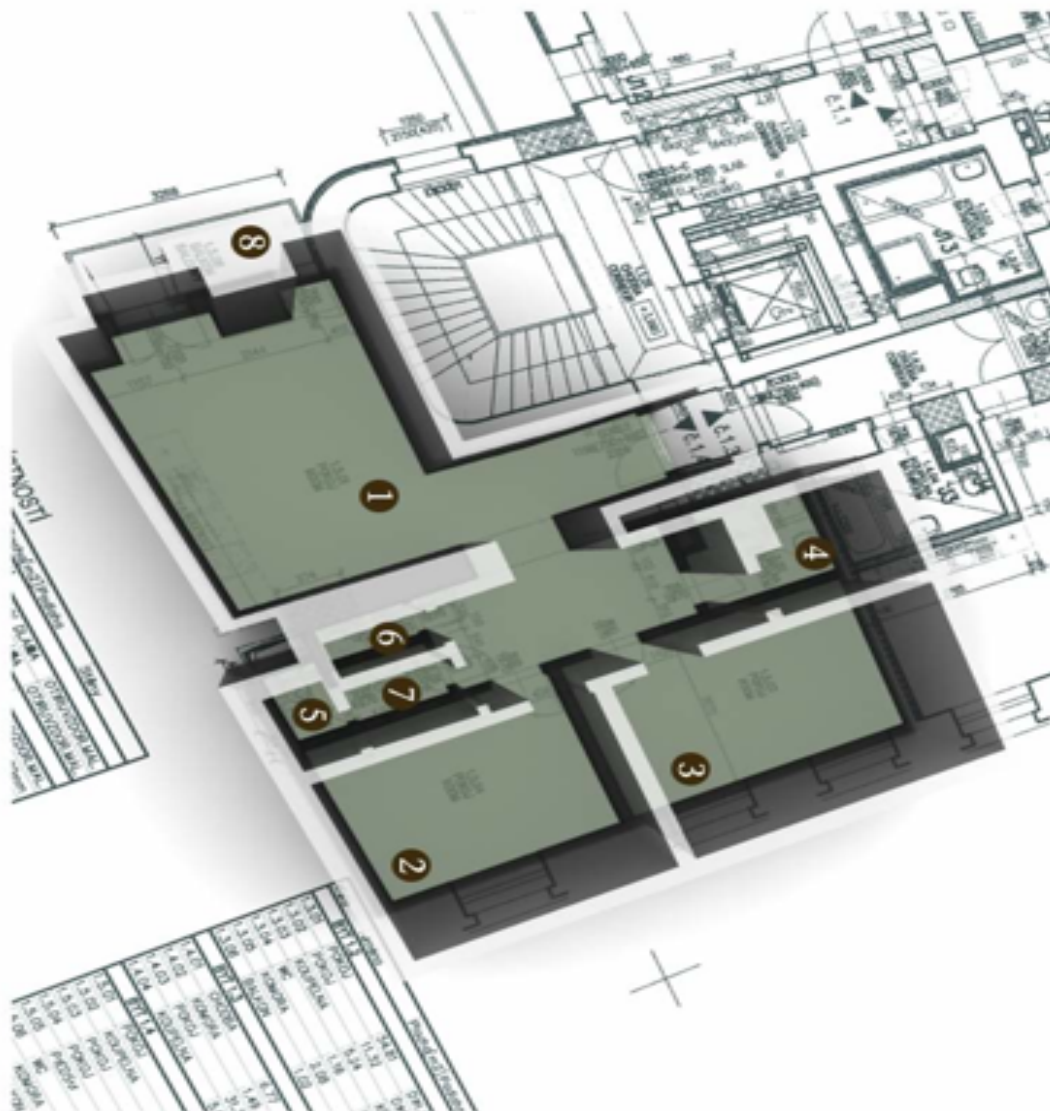
* Area of the unit according to the Civil Code. The area consists of the sum total area of the entire unit bounded by perimeter walls.



Apartment Two-bedroom (3+kk)

70 m², Prague 5, Smíchov, V Lesíčku

Rented



- Byt / Apartment 1-3.4.
- 1,2,3 / Pokoj / Room
- 4 / Koupelna / Bathroom
- 5 / WC
- 6 / Komora / Chamber
- 7 / Předsiň / Hall
- 8 / Balkon / Balcony