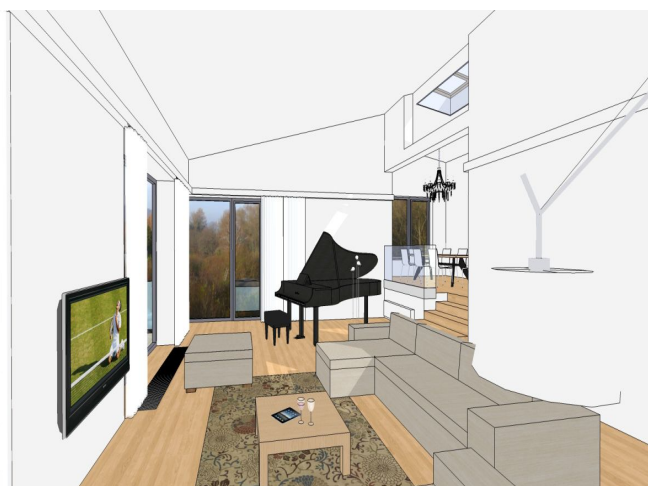
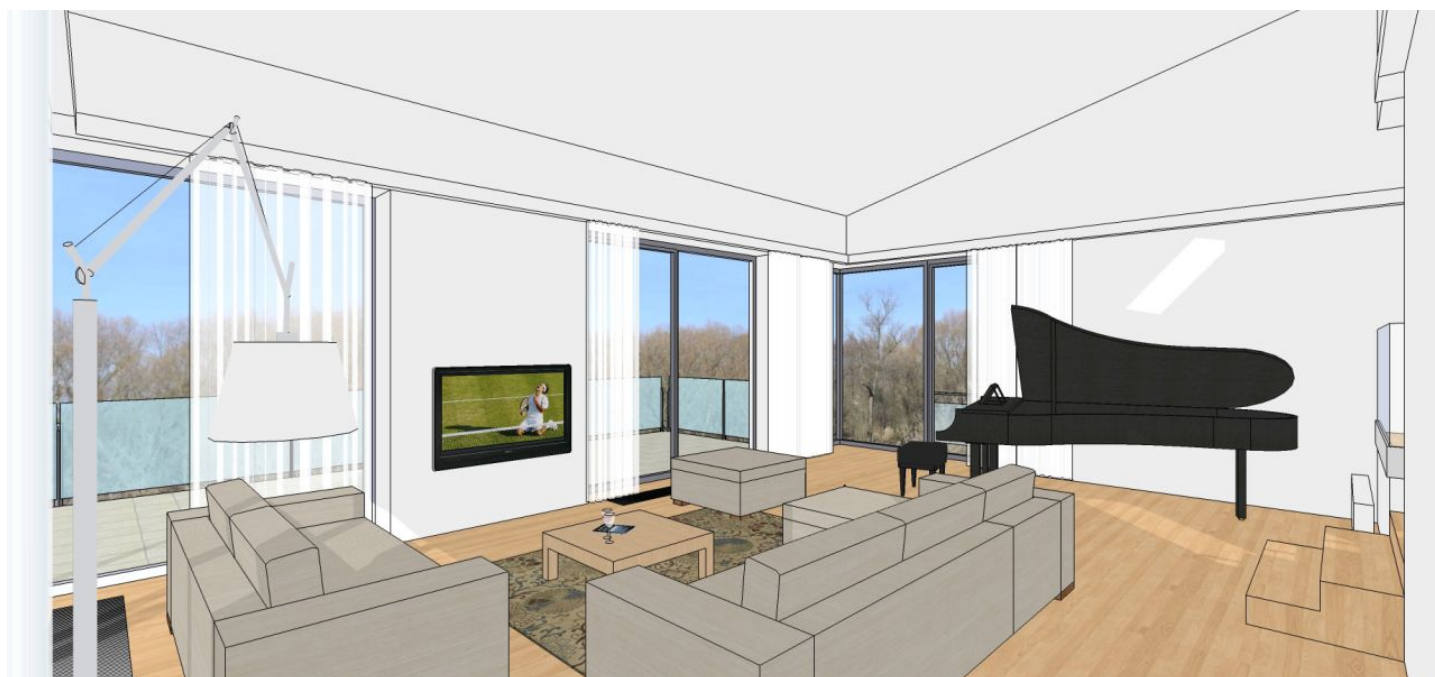




House Eight-bedroom (9+kk)

€ 4 856 | CZK 120 000

370 m², Prague 6, Dejvice, V Šáreckém údolí





House Eight-bedroom (9+kk)

€ 4 856 | CZK 120 000

370 m², Prague 6, Dejvice, V Šáreckém údolí

Parking	Double garage with direct entrance into the house.
Garage	Yes
Cellar	-
PENB	G
Reference number	1877
Available from	Immediately

Newly built, top quality, beautifully finished and well thought out 6-bedroom, 4-bathroom house with an outdoor heated pool, whirlpool hot tub and a 1000 m² landscaped garden in a lovely park-like setting. Two minutes drive to Evropska or to the International School of Prague in Nebusice, 5 minutes to the airport and 10 minutes to Prague center. The house is laid out on 3 floors on a slope with huge plate glass thermal insulated windows and sliding doors that wrap around the corners of the house affording wonderful light and beautiful views of the adjacent forest. The main social and entertaining floor is at street level with a 50 m² representative living room open to a 40 m² open terrace, separate fully equipped kitchen, dining room, and guest toilet. Down one floor are 4 bedrooms with en-suite bathrooms, the master with en-suite bath and a walk-in closet, and built-in wardrobes. On the garden level you have the family room, a small kitchenette, study, 2 bedrooms, a walk-in closet, storage room, bathroom with a shower, and covered terrace with whirlpool. The house is wired for TV, satellite, a security system, and wifi. Monthly deposit for utilities, CZK 10.000. Monthly fee for connection to the security service (optional), CZK 1.250. Ready for occupancy July 15, 2012.

