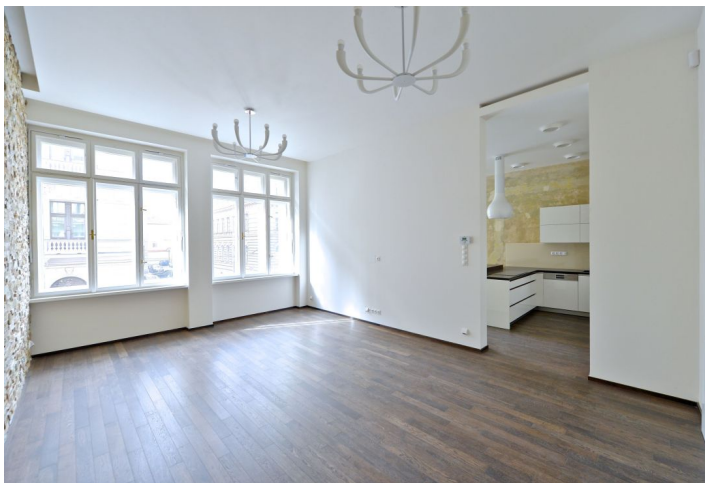




## Apartment Two-bedroom (3+1)

Rented

98 m<sup>2</sup>, Prague 1, Staré Město, Křížovnická





## Apartment Two-bedroom (3+1)

Rented

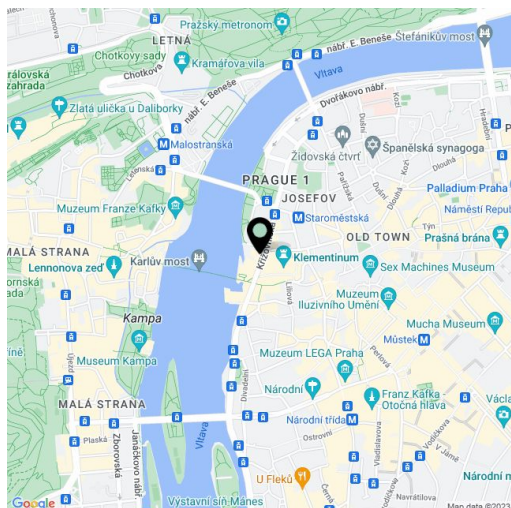
98 m<sup>2</sup>, Prague 1, Staré Město, Křižovnická

Total area	100 m <sup>2</sup>
Floor area*	98 m <sup>2</sup>
Balcony	2 m <sup>2</sup>
Parking	-
Cellar	-
PENB	G
Reference number	18852
Available from	Immediately

**Top standard Prague rental. Centrally located newly fully refurbished and modernized 2-bedroom flat with a balcony, on the first floor of a traditional building with a lift. Located in the heart of the historic Old Town, just steps from the Vltava riverbank, Charles Bridge and Staroměstská metro station and trams.**

Boasting high quality materials and finishes, the interior features two bedrooms facing the quiet courtyard - one of them balcony access, bathroom with a steam shower and toilet, living room, a fully fitted kitchen with dining area, guest toilet, utility room, and entry hall.

Preserved fragments of original walls, new solid wood parquet floors, tiles, floor heating throughout, high ceilings, large double glazed windows, Koppersbusch kitchen appliances, central vacuum, audio, Internet, alarm. Parking possible in the nearby public underground garages Rudolfinum. Common building charges and water CZK 2000 per month. Gas and electricity will be transferred to the tenant.



\* Area of the unit according to the Civil Code. The area consists of the sum total area of the entire unit bounded by perimeter walls.