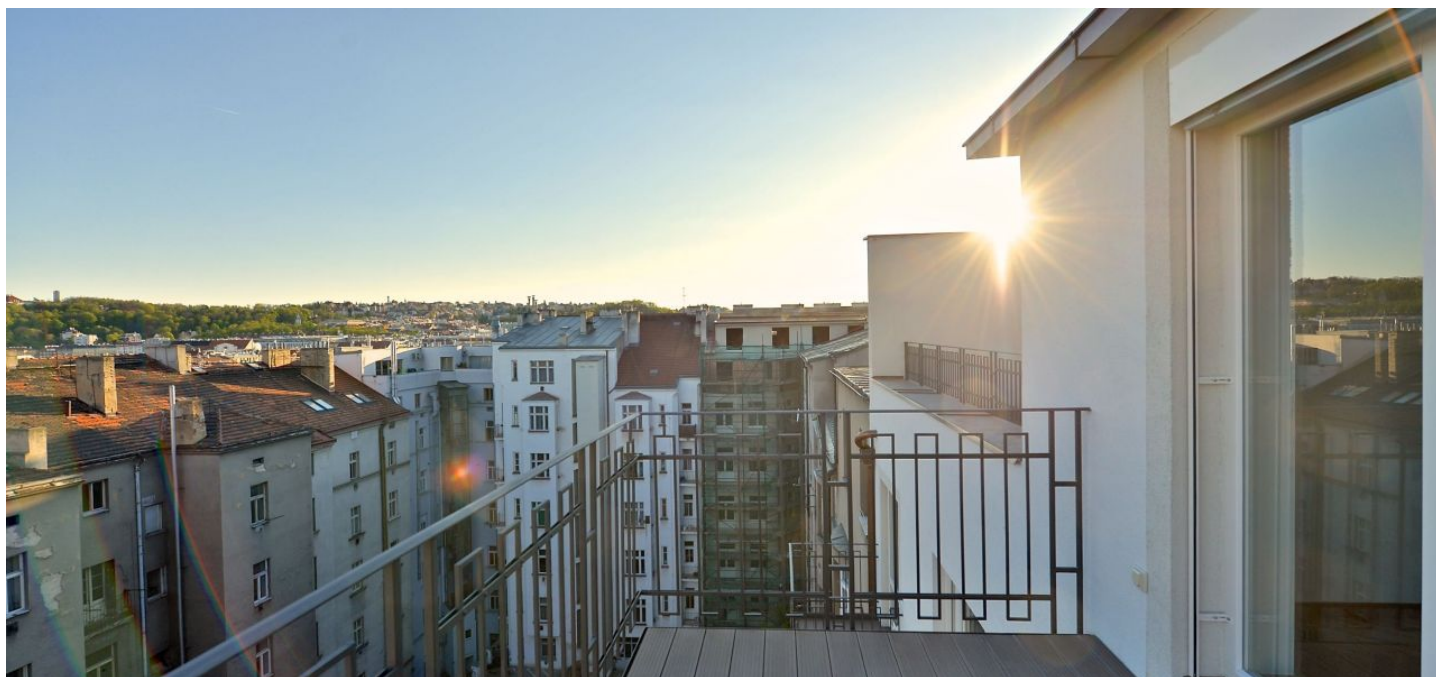




Apartment Two-bedroom (3+kk)

Sold

80 m², Prague 5, Smíchov, Pecháčkova





Apartment Two-bedroom (3+kk)

Sold80 m², Prague 5, Smíchov, Pecháčkova

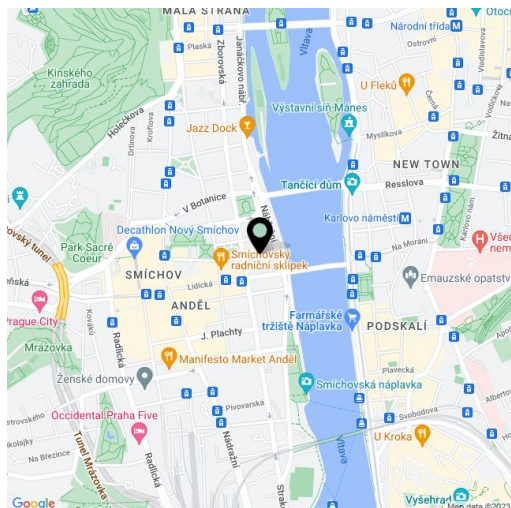
Total area	86 m ²
Floor area*	80 m ²
Terrace	6 m ²
Parking	890 000
Garage	Yes
Cellar	Yes
PENB	G
Reference number	18863

Bright new duplex apartment with a terrace is situated in an elegant building after a complete reconstruction, in which emphasis was placed on preserving original features - just a few steps from the Vltava riverbank, Kinského zahrady gardens and the Nový Smíchov shopping center.

This 6th and 7th floor apartment was completed using high quality materials, with preparation for a kitchen. On the first level, the layout offers a central hall, bedroom and bathroom with bathtub and toilet. From the hall there is a staircase leading to the upper floor, which consists of an open-plan living room with kitchen, dining area and access to the terrace, second bedroom and a bathroom with shower and toilet. **The purchase price includes a cellar, it is possible to buy the garage space for extra fee.**

The location offers all amenities, tram and metro B within walking distance. Nearby you will find numerous cafes and restaurants, the BestFit Studio Smíchov fitness center, and a park at 14. října square.

Interior 80.3 m², terrace 6.49 m².



* Area of the unit according to the Civil Code. The area consists of the sum total area of the entire unit bounded by perimeter walls.



Apartment Two-bedroom (3+kk)

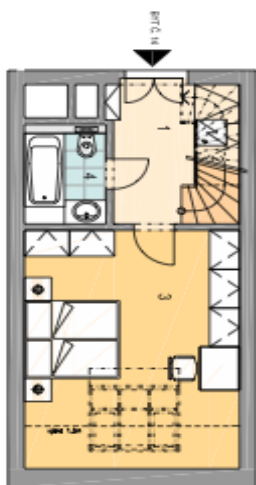
80 m², Prague 5, Smíchov, Pecháčkova

Sold

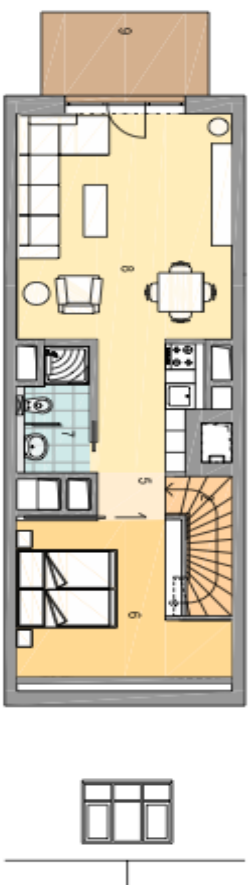
7.NP a 8.NP BYT Č. 14 / 3+KK 80,17 m²

01	CHODBA	7,43
02	SCHODIŠTĚ	3,37
03	POKOJ	19,50
04	KOUPELNA	3,41
05	CHODBA	7,19
06	PRACOVNA	13,32
07	KOUPELNA	3,49
08	OBVY. POKOJ+KUCH.	22,46
CELKOVÁ PLOCHA BYTU		80,17
09	TERASA	6,49

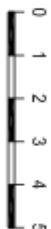
DISPOZICE BYTU - 7.NP



- 8.NP



POLOHA BYTU V DOMĚ



PŮDORYS 7.NP



PŮDORYS 8.NP



POHLED ULIČNÍ



POHLED DVORNÍ

