



## Apartment Two-bedroom (3+kk)

Sold

120 m<sup>2</sup>, Praha 5, Smíchov, Pecháčkova





## Apartment Two-bedroom (3+kk)

**Sold**120 m<sup>2</sup>, Praha 5, Smíchov, Pecháčkova

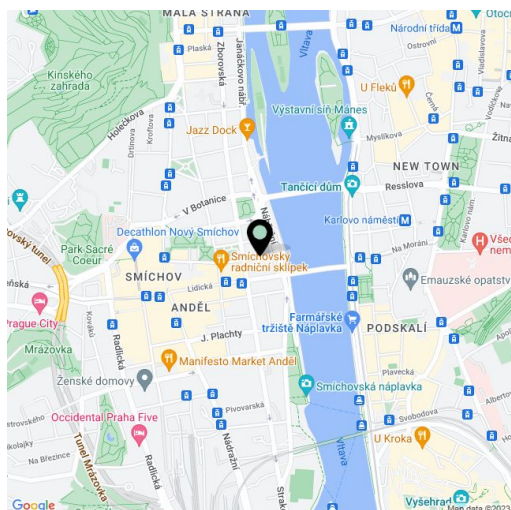
Total area	121 m <sup>2</sup>
Floor area*	120 m <sup>2</sup>
Balcony	1 m <sup>2</sup>
Parking	Yes
Garage	Yes
Cellar	Yes
PENB	G
Reference number	18865

**Bright new apartment with a balcony, undergoing along with the whole building a complete renovation, in which emphasis will be placed on preserving original features - just a few steps from the Vltava riverbank, Kinského zahrady gardens and the Nový Smíchov shopping center.**  
Completion date set for October 2015.

This 5th floor apartment will be completed using high quality materials, with preparation for the kitchen. The layout will offer a central hall with separate toilet, 2 bedrooms (one of them with en-suite bathroom and other with balcony), an open plan living room with space for kitchen corner and dining room, and main bathroom. **The purchase price includes a garage parking space and a cellar.**

The location offers all the amenities, tram and metro B within walking distance. Nearby you will find numerous cafes and restaurants, the BestFit Studio Smíchov fitness center, and a park at 14. října square.

The interior of 119,61 m<sup>2</sup>, balcony 1.80 m<sup>2</sup>.



\* Area of the unit according to the Civil Code. The area consists of the sum total area of the entire unit bounded by perimeter walls.



# Apartment Two-bedroom (3+kk)

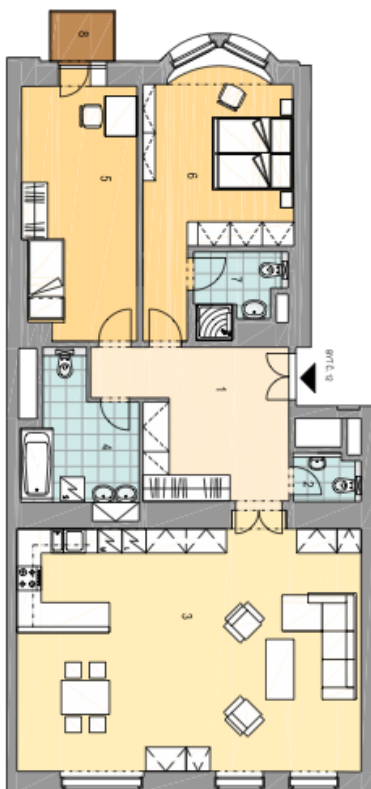
120 m<sup>2</sup>, Praha 5, Smíchov, Pecháčkova

Sold

**6.NP**  
**BYT Č. 12 / 3+KK**  
**119,61 m<sup>2</sup>**

01	CHODBA	15,48
02	WC	1,95
03	OBYV. POKOJ+KUCH.	52,64
04	KOUPELNA	8,78
05	POKOJ	17,53
06	POKOJ	19,23
07	KOUPELNA	4,00
CELKOVÁ PLOCHA BYTU		119,61
08	BALKON	1,80

## DISPOZICE BYTU



## POLOHA BYTU V DOMĚ

PŮDORYS 6.NP



POHLED ULIČNÍ



POHLED DVORNÍ

