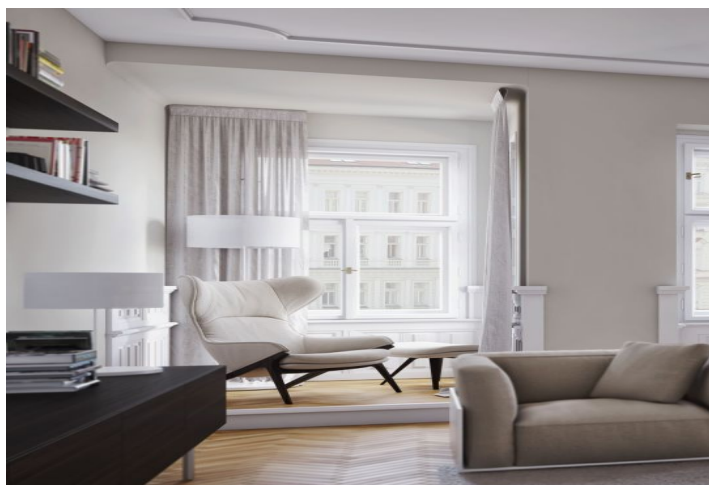




## Apartment One-bedroom (2+kk)

Sold

65 m<sup>2</sup>, Prague 5, Smíchov, Pecháčkova





## Apartment One-bedroom (2+kk)

**Sold**65 m<sup>2</sup>, Prague 5, Smíchov, Pecháčkova

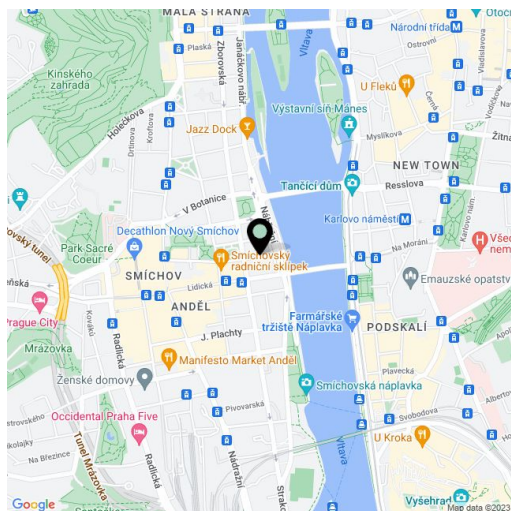
Total area	65 m <sup>2</sup>
Parking	Yes
Garage	Yes
Cellar	Yes
PENB	G
Reference number	18870

**Bright new apartment, undergoing along with the whole building a complete renovation, in which emphasis will be placed on preserving original features - just a few steps from the Vltava riverbank, Kinského zahrady gardens and the Nový Smíchov shopping center. Completion date set for October 2015.**

This 3rd floor apartment will be completed using high quality materials, with preparation for a kitchen. The layout will offer a central hall with built-in wardrobes, separate toilet, an open plan living room with space for kitchen corner and dining room and a bedroom with en-suite bathroom. **The purchase price includes a garage parking space and a cellar.**

The location offers all amenities, tram and metro B within walking distance. Nearby you will find numerous cafes and restaurants, the BestFit Studio Smíchov fitness center, and a park at 14. října square.

Interior 65,51 m<sup>2</sup>.



\* Area of the unit according to the Civil Code. The area consists of the sum total area of the entire unit bounded by perimeter walls.



# Apartment One-bedroom (2+kk)

65 m<sup>2</sup>, Prague 5, Smíchov, Pecháčkova

Sold

**4.NP**  
**BYT Č. 7 / 2+KK**  
**65,51 m<sup>2</sup>**

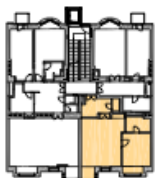
01	CHODBA	7,63
02	WC	1,74
03	KOUPELNA + WC	5,83
04	POKOJ	16,56
05	OBÝV. POKOJ+KUCH.	33,75
CELKOVÁ PLOCHA BYTU		65,51

## DISPOZICE BYTU



## POLOHA BYTU V DOMĚ

PŮDORYS 4.NP



POHLED ULIČNÍ



POHLED DVORNÍ

