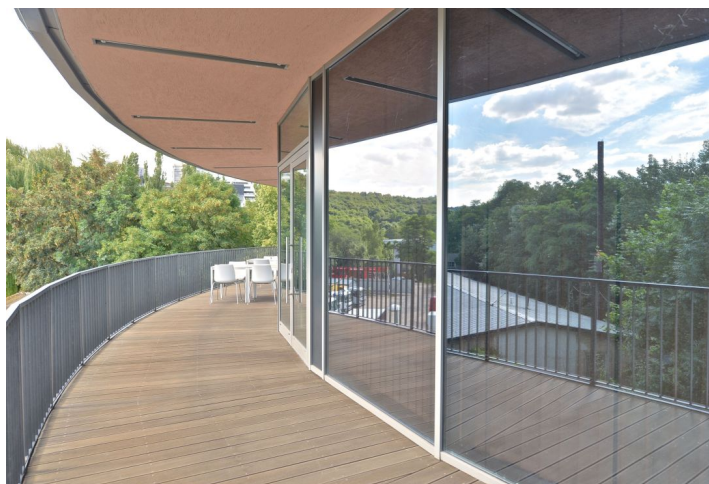




Office building

Prague 5, Radlice, Kutvirtova

Rented





Office building

Prague 5, Radlice, Kutvirtova

Rented

Service price	125 CZK monthly per m ²
Total building area	4 300 m ²
Tenant consumption	—
Parking	85 EUR
Parking service charges	—
Parking ratio	—
Certification	—
PENB	G
Reference number	18888

Administrative building with office space for lease situated in Prague 5 – Radlice. Easy accessibility by car and public transport – in vicinity of the Radlická metro station (line A). Easy connection to the D1 and D5 highways.

Features and services:

Central reception
Security Service
Access by cards
Lifts
Flexible office layout
Air-conditioning
Raised floors
Carpets
Restaurant and cafeteria in the building
Parking

Rental and service charges listed without VAT. Lessee pays no commission.

