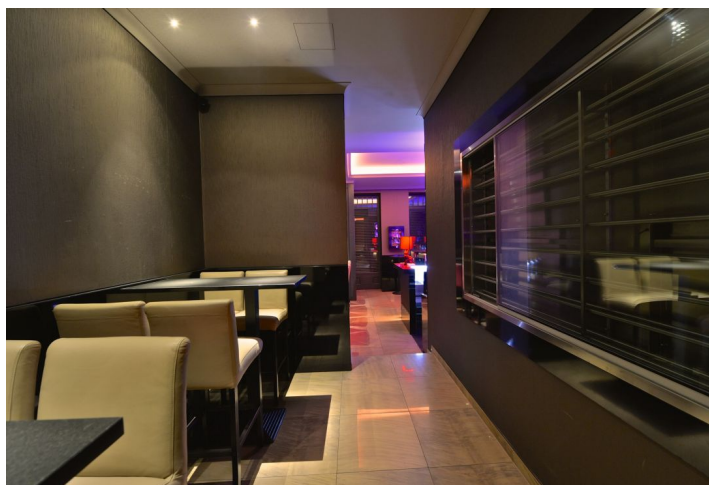
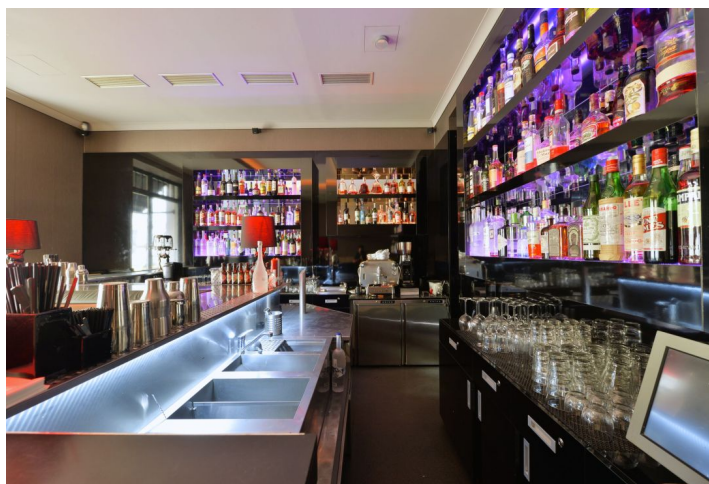




## Retail space

247 m<sup>2</sup>, Prague 10, Vršovice, Kodaňská

Sold





## Retail space

247 m<sup>2</sup>, Prague 10, Vršovice, Kodaňská

**Sold**

Total area	247 m <sup>2</sup>
Parking	-
PENB	G
Reference number	18897

**Business premises including original designer bar and café on the ground floor and first basement floor of a traditional rental building, which has undergone a complete refurbishment and was approved as a new building in 2012.**

Commercial premises with a total area of 247.26 m<sup>2</sup> are fully equipped with all appliances, dishes and furniture (matching wood paneling and floor tiles in the cafeteria, Indian granite in the bar). **All equipment in superior quality, including lighting and sound system**, awnings, steel shutters on doors and windows both to the street and the courtyard, ventilation with air conditioning and recuperation controlled by computer from the bar, cashier and storage touchscreen system, computer network. **High level of security - locks with special keys, house is guarded by CCTV.**

Ready to open.

An option to purchase the bar and cafe separately or together, as well as to build about 10 parking spaces instead of the garden.

Excellent public transport connection, a few minutes drive from the center.

