



Apartment Three-bedroom (4+1)

€ 3 782 | CZK 95 000

152 m², Prague 2, Nové Město, Rašínovo nábřeží





Apartment Three-bedroom (4+1)

€ 3 782 | CZK 95 000

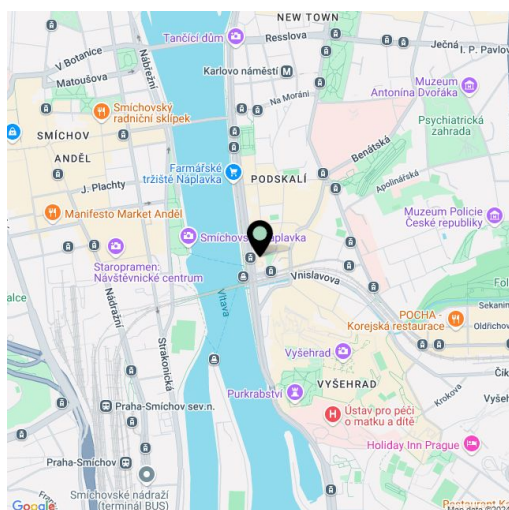
152 m², Prague 2, Nové Město, Rašínovo nábřeží

Total area	155 m ²
Floor area*	152 m ²
Balcony	3 m ²
Parking	-
Cellar	Yes
Service price	Common building charges and utilities approx CZK 15,000 per month.
PENB	Not required
Reference number	18898
Available from	Immediately

Unique Prague rental with unbeatable views. This premium riverfront apartment with a balcony offers amazing views of the Vltava River and Prague Castle. Situated on the 2nd floor of a traditional residential building that has been meticulously reconstructed with utmost care to preserve the original details. Very good transportation connections, moments from trams and metro.

The interior features four interconnected rooms with direct views of the river, a fully fitted kitchen, a dining room, a lounge, and one bedroom. There is also another bedroom with a walk-in closet and balcony facing the courtyard, two marble bathrooms, a guest toilet, a laundry room, and a spacious entry hall with built-in wardrobes.

Hardwood parquet floors throughout, carpets, original artworks, security entry door, plumbing and electrical system with BTicino fittings, washer, dryer, wine fridge, three TVs, Apple and surround sound TV, alarm. Can be rented unfurnished.



* Area of the unit according to the Civil Code. The area consists of the sum total area of the entire unit bounded by perimeter walls.



Apartment Three-bedroom (4+1)

€ 3 782 | CZK 95 000

152 m², Prague 2, Nové Město, Rašínovo nábřeží





Apartment Three-bedroom (4+1)

€ 3 782 | CZK 95 000

152 m², Prague 2, Nové Město, Rašínovo nábřeží





Apartment Three-bedroom (4+1)

€ 3 782 | CZK 95 000

152 m², Prague 2, Nové Město, Rašínovo nábřeží





Apartment Three-bedroom (4+1)

€ 3 782 | CZK 95 000

152 m², Prague 2, Nové Město, Rašínovo nábřeží

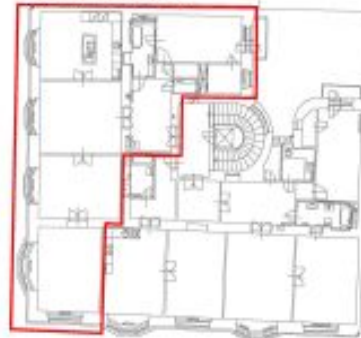
RESIDENTIAL BUILDING, NA HROBCI 410/1, PRAHA 2



FLAT no.6 (1st FLOOR)

R.NO.	ROOM	m ²
2.17	ENTRANCE HALL	15,0
2.18	TOILET	1,5
2.19	STORAGE	1,5
2.20	BATHROOM	6,2
2.21	BEDROOM	17,6
2.22	WARDROBE	4,8
2.23	KITCHEN	24,8
2.24	DINING ROOM	26,4
2.25	LIVING ROOM	23,3
2.26	BEDROOM	25,5
TOTAL NET AREA		146,4
2.27	BALCONY	2,3

SCHEME OF FIRST FLOOR PLAN



SCALE 1:100 (m)



The area schedule is approximate and real areas can be slightly different.
The furniture equipment is for presentation only and it is not included in a flat price.