



## Apartment Two-bedroom (3+kk)

Sold

121 m<sup>2</sup>, Prague 5, Smíchov, Pecháčkova





## Apartment Two-bedroom (3+kk)

**Sold**121 m<sup>2</sup>, Prague 5, Smíchov, Pecháčkova

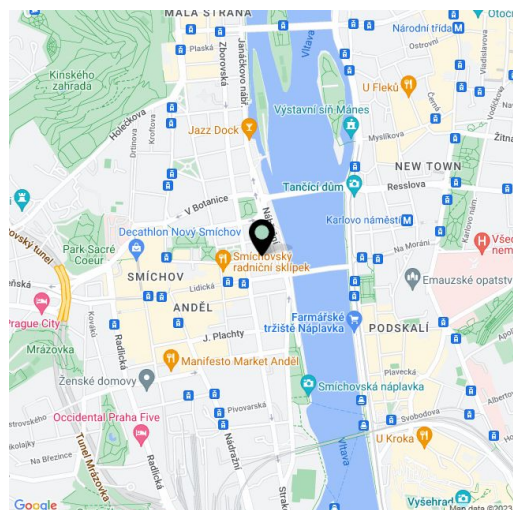
Total area	122 m <sup>2</sup>
Floor area*	121 m <sup>2</sup>
Balcony	1 m <sup>2</sup>
Parking	Yes
Garage	Yes
Cellar	Yes
PENB	G
Reference number	18917

**Bright new apartment with balcony and 2 bathrooms, undergoing along with the whole building a complete renovation, in which emphasis will be placed on preserving original features - just a few steps from the Vltava riverbank, Kinského zahrady gardens and the Novy Smichov shopping center. Completion date set for October 2015.**

This 2nd floor apartment will be completed using high quality materials, with preparation for a kitchen. The layout will offer a central hall with space for built-in wardrobes, separate toilet and utility room, an open-plan living room with space for kitchen corner and dining room, 2 bedrooms (one with en-suite bathroom, another with balcony) and a master bathroom. **The purchase price includes a garage parking space and a cellar.**

The location offers all amenities, tram and metro B within walking distance. Nearby you will find numerous cafes and restaurants, the BestFit Studio Smíchov fitness center, and a park at 14. října square.

Interior 120.44 m<sup>2</sup>, balcony 1.8 m<sup>2</sup>.



\* Area of the unit according to the Civil Code. The area consists of the sum total area of the entire unit bounded by perimeter walls.



# Apartment Two-bedroom (3+kk)

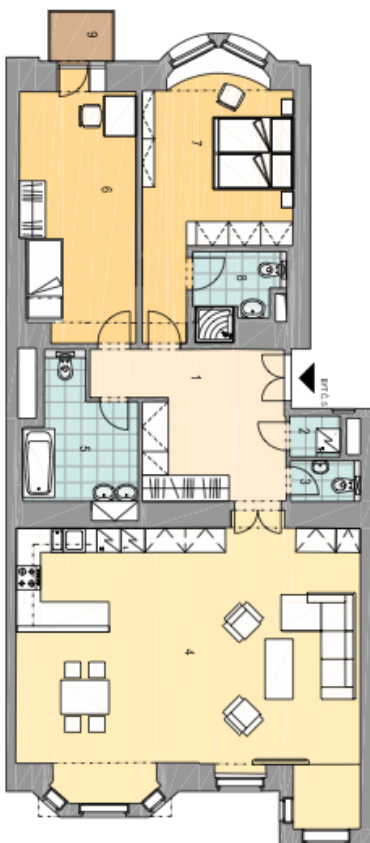
121 m<sup>2</sup>, Prague 5, Smíchov, Pecháčkova

Sold

## 3.NP BYT Č. 5 / 3+KK 120,44 m<sup>2</sup>

01	CHODBA	14,93
02	PRADELNA	1,27
03	WC	1,76
04	OBÝV. POKOJ+KUCH.	53,39
05	KOUPELNA	8,45
06	POKOJ	17,40
07	POKOJ	19,17
08	KOUPELNA	4,07
09	CELKOVÁ PLOCHA BYTU	120,44
	BALKON	1,80

### DISPOZICE BYTU



### POLOHA BYTU V DOMĚ

PŮDORYS 3.NP



POHLED ULIČNÍ



POHLED DVORNÍ

