



Apartment Two-bedroom (3+kk)

Sold

118 m², Prague 5, Smíchov, Pecháčkova





Apartment Two-bedroom (3+kk)

Sold118 m², Prague 5, Smíchov, Pecháčkova

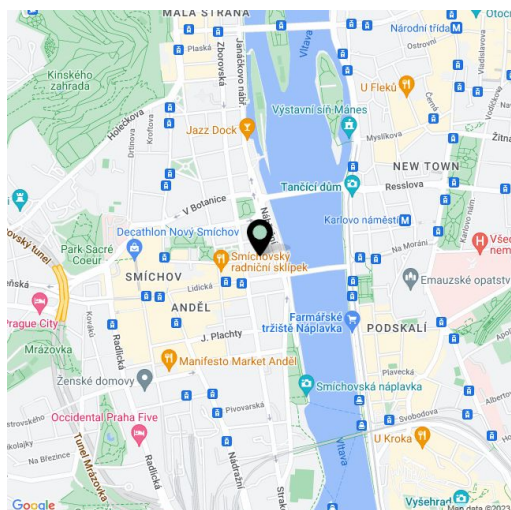
Total area	120 m ²
Floor area*	118 m ²
Balcony	2 m ²
Parking	890 000
Garage	Yes
Cellar	Yes
PENB	G
Reference number	18919

Bright new apartment with a balcony, undergoing along with the whole building a complete renovation, in which emphasis will be placed on preserving original features - just a few steps from the Vltava riverbank, Kinského zahrady gardens and the Nový Smíchov shopping center.
Completion date set for Q4 2015.

This 1st floor apartment will be completed using high quality materials, with preparation for the kitchen. The layout will offer a central hall with separate toilet, utility room and main bathroom, 2 bedrooms (one of them with ensuite bathroom and other with balcony), and an open plan living room with space for kitchen corner and dining room. **The purchase price includes a garage parking space and a cellar.**

The location offers all the amenities, tram and metro B within walking distance. Nearby you will find numerous cafes and restaurants, the BestFit Studio Smíchov fitness center, and a park at 14. října square.

The interior of 118 m², balcony 1.80 m², cellar 3.45 m².



* Area of the unit according to the Civil Code. The area consists of the sum total area of the entire unit bounded by perimeter walls.



Apartment Two-bedroom (3+kk)

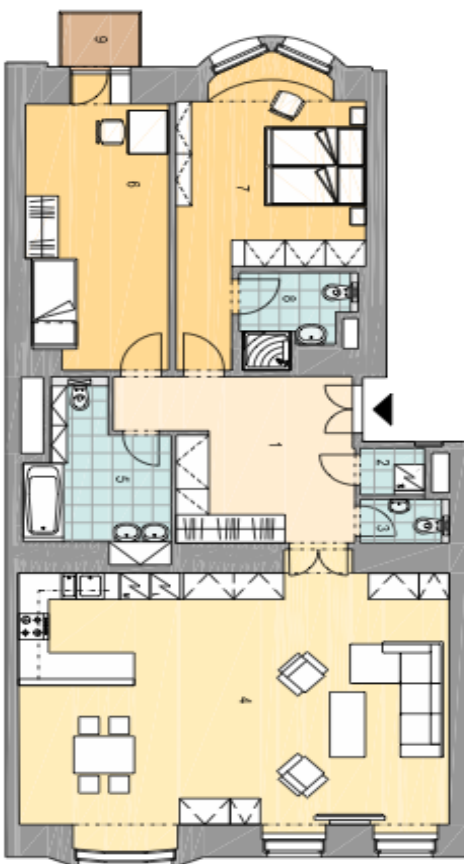
118 m², Prague 5, Smíchov, Pecháčkova

Sold

2.NP BYT Č. 3 / 3+KK 118 m²

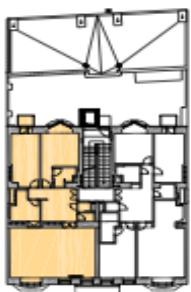
01	CHODBA	14,98m ²
02	PRÁDELNA	1,37m ²
03	WC	1,78m ²
04	OBÝV. POKOJ+KUCH.	51,24m ²
05	KOUPELNA	8,78m ²
06	POKOJ	16,79m ²
07	POKOJ	18,99m ²
08	KOUPELNA	4,07m ²
CELKOVÁ PLOCHA BYTU		118m ²

DISPOZICE BYTU



POLOHA BYTU V DOMĚ

PŮDORYS 2.NP



POHLED ULIČNÍ



POHLED DVORNÍ

