



Apartment One-bedroom (2+kk)

Sold

61 m², Prague 5, Smíchov, Pecháčkova





Apartment One-bedroom (2+kk)

Sold61 m², Prague 5, Smíchov, Pecháčkova

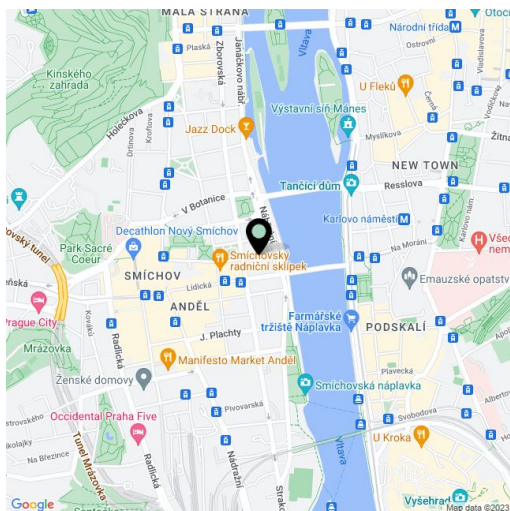
| | |
|------------------|-------------------|
| Total area | 61 m ² |
| Parking | Yes |
| Garage | Yes |
| Cellar | Yes |
| PENB | G |
| Reference number | 18920 |

Bright new atelier, undergoing along with the whole building a complete renovation, in which emphasis will be placed on preserving original features - just a few steps from the Vltava riverbank, Kinského zahrady gardens and the Nový Smíchov shopping center. Completion date set for Q4 2015.

This 1st floor atelier will be completed using high quality materials, with preparation for a kitchen. The layout will offer a central hall with built-in wardrobes, a bathroom with bathtub and toilet, a guest toilet, an open-plan living room with space for kitchen corner and dining room, and a bedroom. **The purchase price includes a garage parking space and a cellar.**

The location offers all amenities, tram and metro B within walking distance. Nearby you will find numerous cafes and restaurants, the BestFit Studio Smíchov fitness center, and a park at 14. října square.

Interior 61.48 m², cellar 1.72 m².



* Area of the unit according to the Civil Code. The area consists of the sum total area of the entire unit bounded by perimeter walls.



Apartment One-bedroom (2+kk)

61 m², Prague 5, Smíchov, Pecháčkova

Sold

2.NP BYT Č. 2b / 2+KK 61,48 m²

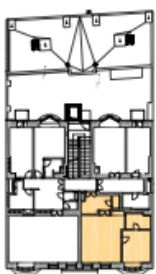
| | | |
|---------------------|-------------------|---------------------|
| 01 | CHODBA | 7,64m ² |
| 02 | WC | 1,53m ² |
| 03 | KOUPELNA + WC | 5,83m ² |
| 04 | POKOJ | 15,89m ² |
| 05 | OBÝV. POKOJ+KUCH. | 30,59m ² |
| CELKOVÁ PLOCHA BYTU | | 61,48m ² |

DISPOZICE BYTU



POLOHA BYTU V DOMĚ

PŮDORYS 2.NP



POHLED ULIČNÍ



POHLED DVORNÍ

