



Apartment One-bedroom (2+kk)

Sold

48 m², Prague 5, Smíchov, Pecháčkova





Apartment One-bedroom (2+kk)

Sold48 m², Prague 5, Smíchov, Pecháčkova

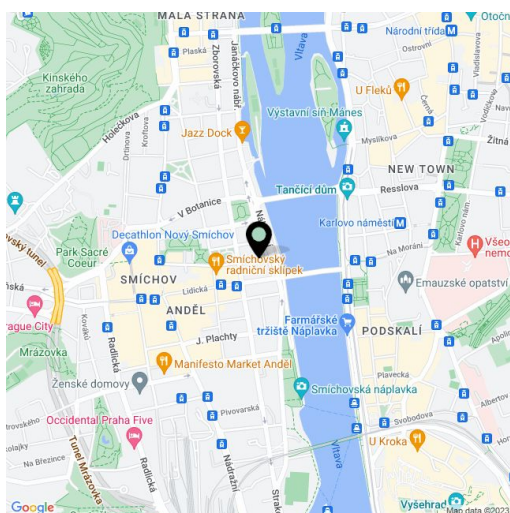
| | |
|------------------|-------------------|
| Total area | 48 m ² |
| Garden | 28 m ² |
| Parking | 890 000 |
| Garage | Yes |
| Cellar | Yes |
| PENB | G |
| Reference number | 18921 |

Bright new apartment undergoing along with the whole building a complete renovation, in which emphasis will be placed on preserving original features - just a few steps from the Vltava riverbank, Kinského zahrady gardens and the Novy Smichov shopping center. Completion date set for March 2016.

This ground floor apartment will be completed using high quality materials, with preparation for a kitchen. The layout will offer a central hall, an open-plan living room with space for kitchen corner and dining room, a bedroom with en-suite bathroom, separate toilet and utility room. **The purchase price includes a garage parking space and a cellar.**

The location offers all amenities, tram and metro B within walking distance. Nearby you will find numerous cafes and restaurants, the BestFit Studio Smíchov fitness center, and a park at 14. října square.

Interior 52 m², 28 m² garden.



* Area of the unit according to the Civil Code. The area consists of the sum total area of the entire unit bounded by perimeter walls.



Apartment One-bedroom (2+kk)

48 m², Prague 5, Smíchov, Pecháčkova

Sold

1.NP BYT Č. 1 / 2+KK 48,32 m²

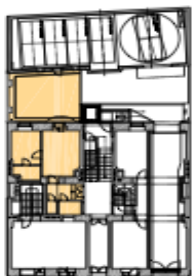
| | | |
|---------------------|-------------------|-------|
| 01 | CHODBA | 6,55 |
| 02 | ŠATNA | 3,57 |
| 03 | WC | 1,76 |
| 04 | OBÝV. POKOJ+KUCH. | 20,62 |
| 05 | POKOJ | 11,43 |
| 06 | KOUPELNA | 4,39 |
| CELKOVÁ PLOCHA BYTU | | 48,32 |

DISPOZICE BYTU



POLOHA BYTU V DOMĚ

PŮDORYS 1.NP



POHLED ULIČNÍ



POHLED DVORNÍ

