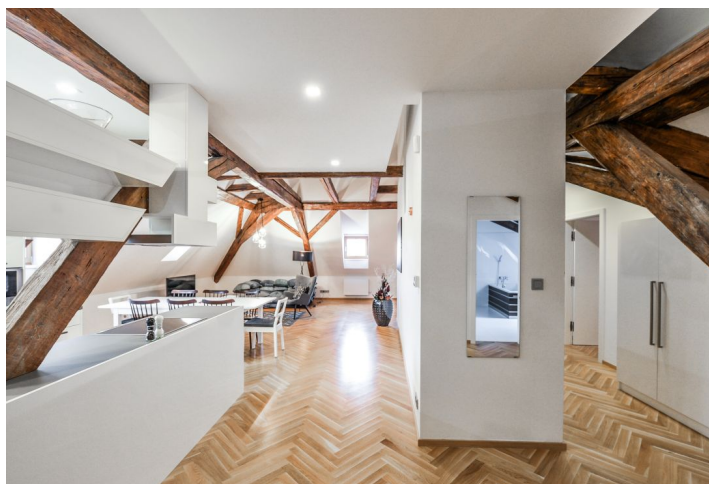




Apartment Two-bedroom (3+kk)

Rented

171 m², Prague 1, Malá Strana, Cihelná





Apartment Two-bedroom (3+kk)

Rented

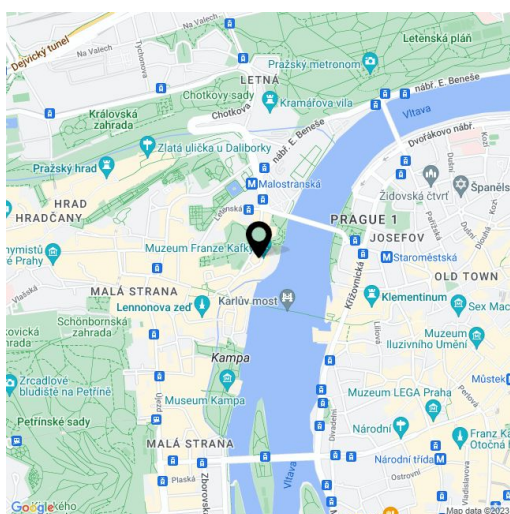
171 m², Prague 1, Malá Strana, Cihelná

Total area	171 m ²
Parking	-
Cellar	-
PENB	G
Reference number	18971
Available from	Immediately

This fully furnished air-conditioned two-bedroom duplex attic apartment with spectacular views and 24-hour security is on the 3rd floor of a fully renovated historic building in Mala Strana, just a "stone's throw" from Charles Bridge and Kampa Island Park.

It consists of a fully fitted kitchen, a living room, 2 bedrooms, a bathroom with a tub, shower, and sink, a separate toilet and bidet, and a gallery.

Other features include parquet and tile floors, preserved original beams, satellite TV. Monthly deposit for service charges and water: CZK 1,600/person. Gas and electricity will be transferred to the tenant.



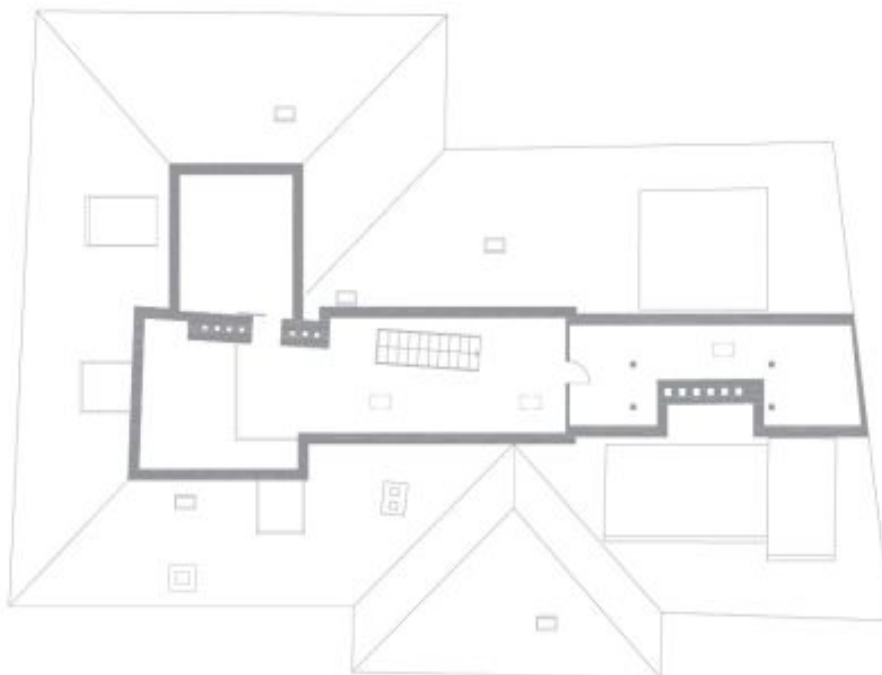
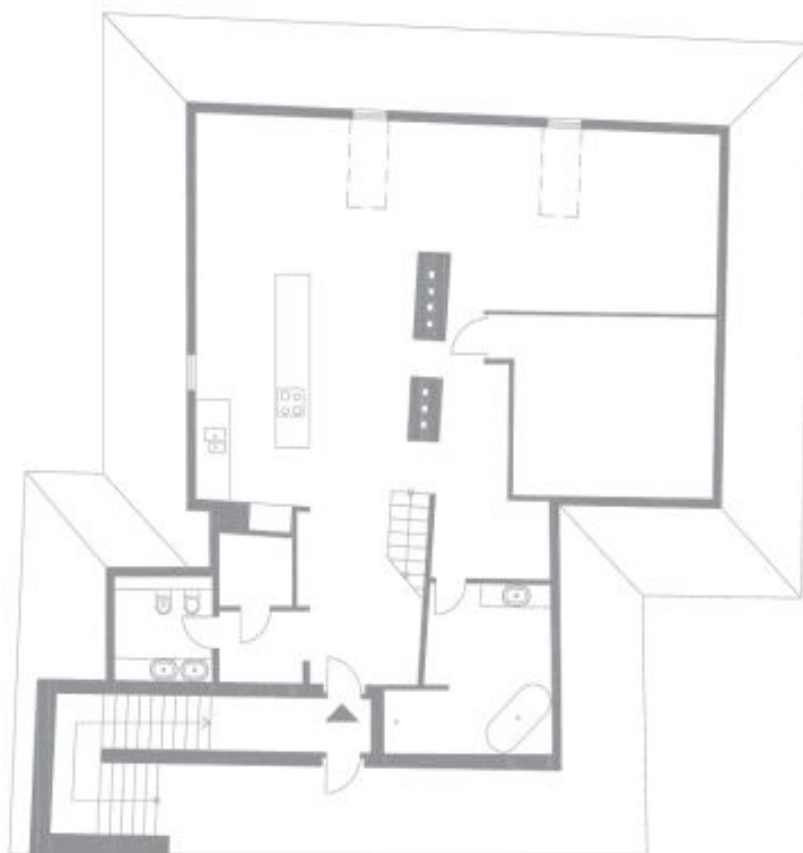
* Area of the unit according to the Civil Code. The area consists of the sum total area of the entire unit bounded by perimeter walls.



Apartment Two-bedroom (3+kk)

171 m², Prague 1, Malá Strana, Cihelná

Rented

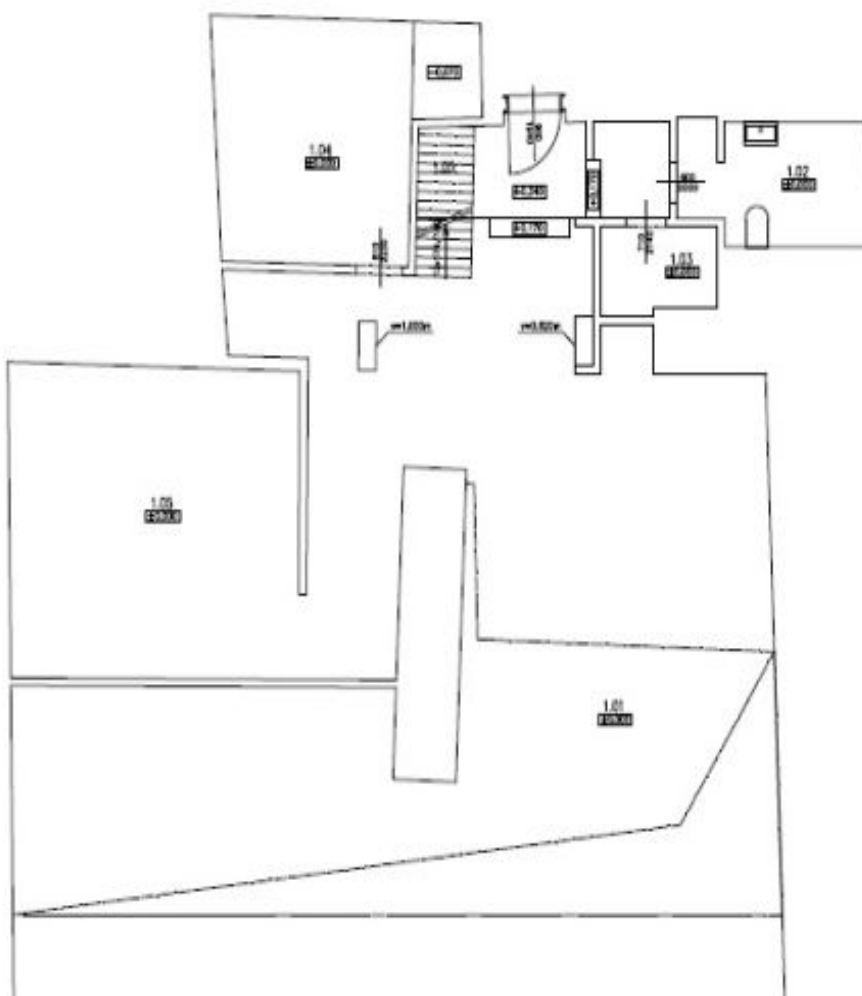




Apartment Two-bedroom (3+kk)

171 m², Prague 1, Malá Strana, Cihelná

Rented



Podmínky
Všechny údaje jsou orientační a mohou být ovlivněny měřeními a provedením reálné stavby a rozdílnými přílohy státní a provedení zprávy státní.

VRCHNÍ PODLAŽÍ

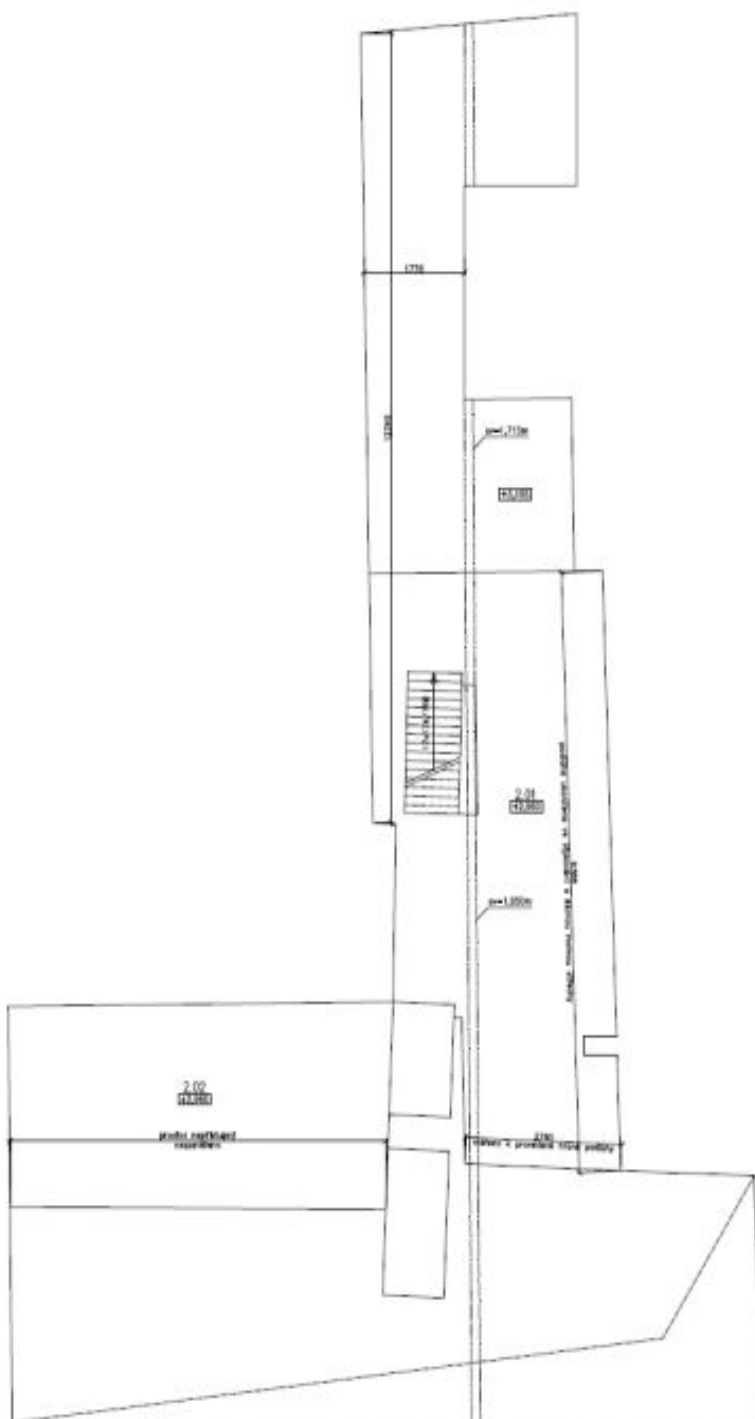
Podlaží	plocha (m ²)
1.01	10,17
1.02	5,70
1.03	2,57
1.04	13,85
1.05	2,36
1.00	56,8
1.02	rekonstrukce
sum	213,45 m²



Apartment Two-bedroom (3+kk)

171 m², Prague 1, Malá Strana, Cihelná

Rented



Poznámka:
Vzhledem ke standardnímu stavu bytu jsou rozměry místností a prostorů jen orientační a
s možnými výjimkami závisí na provedení povrchů, sítě.

VRCHNÍ POKLAD

číslo	plocha(m ²)
2.01	12,17
2.02	12,20
2.03	12,20
2.04	13,85
2.05 schodiště	1,36
2.06	3,6
2.07	terasa/ter. 23,40
celkem	213,40 m²

