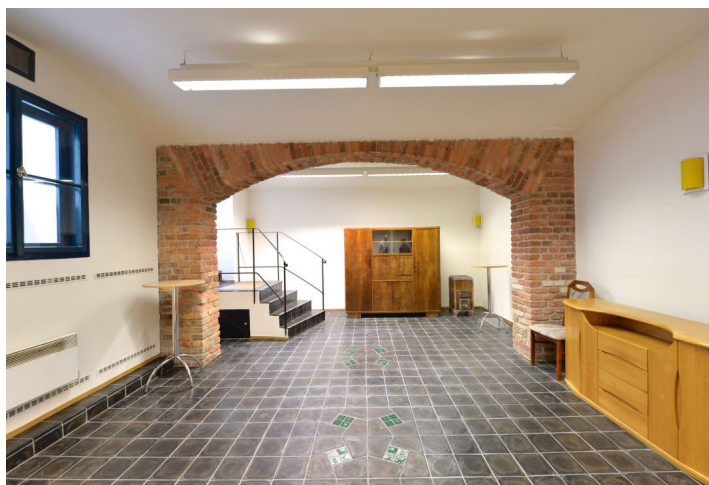




Office building

Praha 5, Smíchov, Bieblova

Rented





Office building

Praha 5, Smíchov, Bieblova

Rented

Service price	51 CZK monthly per m ²
Total building area	829 m ²
Tenant consumption	—
Parking	Yes
Parking service charges	—
Parking ratio	—
Certification	—
PENB	G
Reference number	18978

Reconstructed early Art Nouveau building with commercial space for lease located in Prague 5, in close vicinity of two parks.

Location:

The building is situated close to one of Prague's shopping centers and within walking distance of the Anděl metro station (line B). The offices are easily accessible by car and public transportation. A number of tram stops, and a bus and train station are nearby.

Features and services:

- security connected to a PCO
- computer networks
- possibility of connecting to landlines
- possibility of office cleaning services
- parking

The rental price is **CZK 170/m²/month**. Rental and service charges listed without VAT. Lessee pays no commission.



Praha 5

1.PP -

suterén

