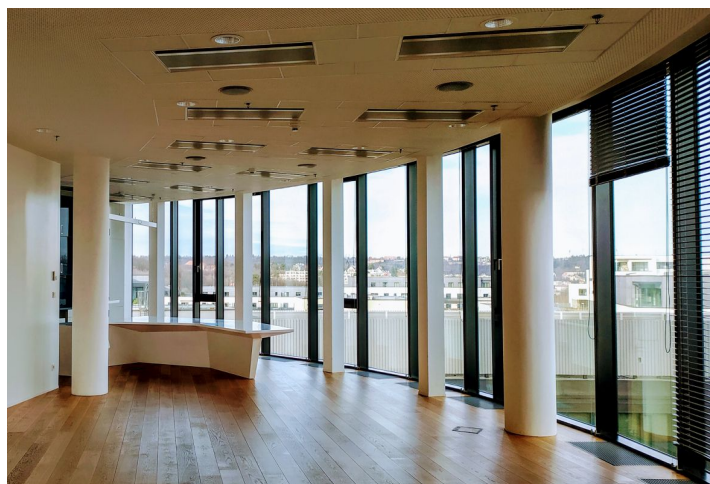
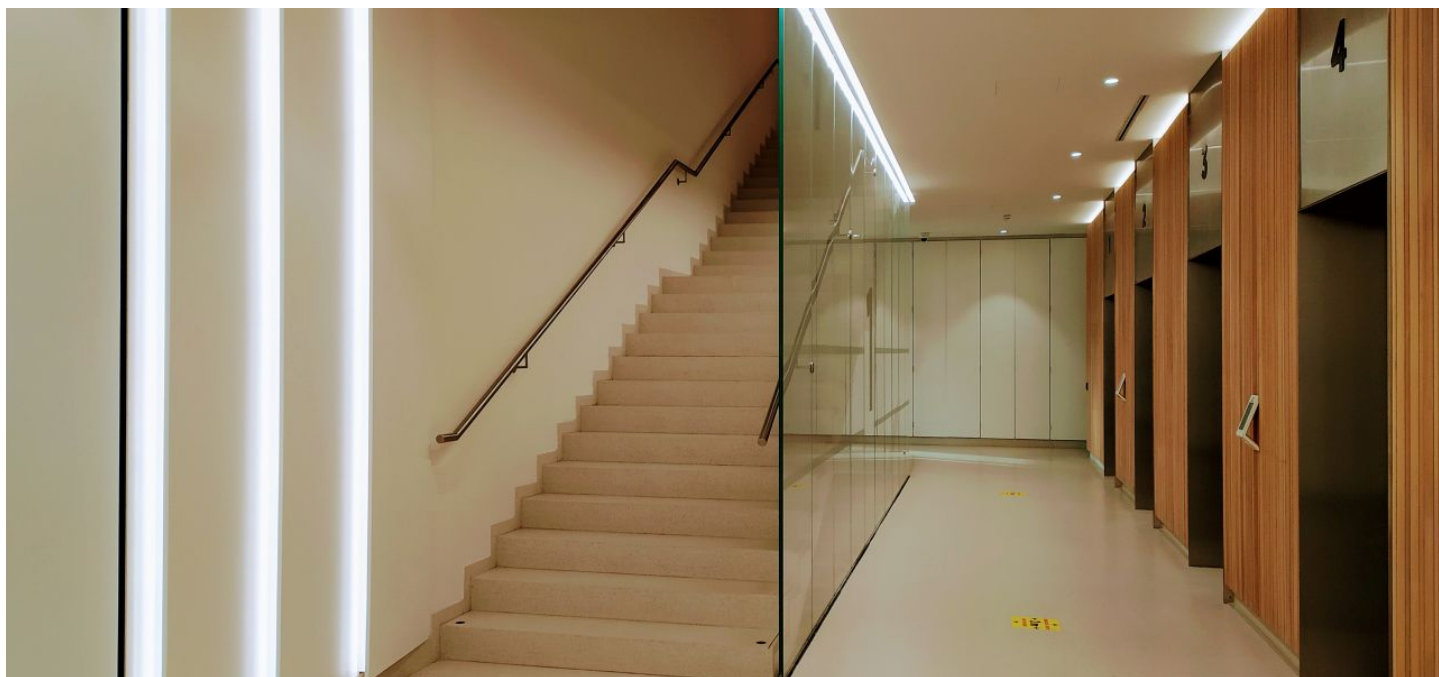




# Office space

Prague 5, Jinonice, U Trezorky

Rented





Prague 5, Jinonice, U Trezorky

Service price	160 CZK monthly per m <sup>2</sup>
Available area	1 129 m <sup>2</sup>
Cellar	-
Parking	EUR 90 / pp / month
PENB	G
Reference number	18981

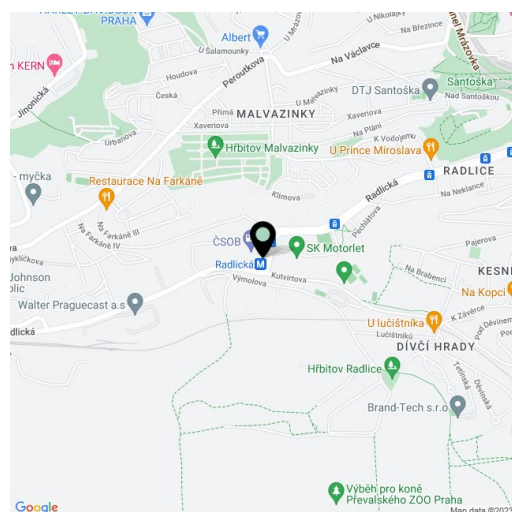
High-quality and modern office space for lease in the first building built in the Waltrovka complex, which offers up to 27,000 sq. m. of leasable space. The premises are offered in the latest technical standards. There are up to 11 elevators, an elegant reception, and parking. The building's surroundings also offer a pleasant inner square with greenery, water features, and relaxation zones. The building has won a number of prestigious international awards.

**Location:**

Great accessibility by car and public transport. The Jinonice metro station (line B), and the Jinonice, Hutmanka, and U Waltrovky bus stops and the Prague-Jinonice train station are nearby. Easy access from three main roads: Radlická, Jinonická, and Peroutkova.

**Features and Services:**

- Elegant reception
- Card entry system with turnstiles
- Heating with convector heaters
- Cooling beams integrated in the ceilings
- Reduced ceilings with lighting
- Raised floors
- Openable windows
- 11 elevators
- Clear height of 3 m
- Parking



Rental and service charges listed without VAT. Lessee pays no commission.