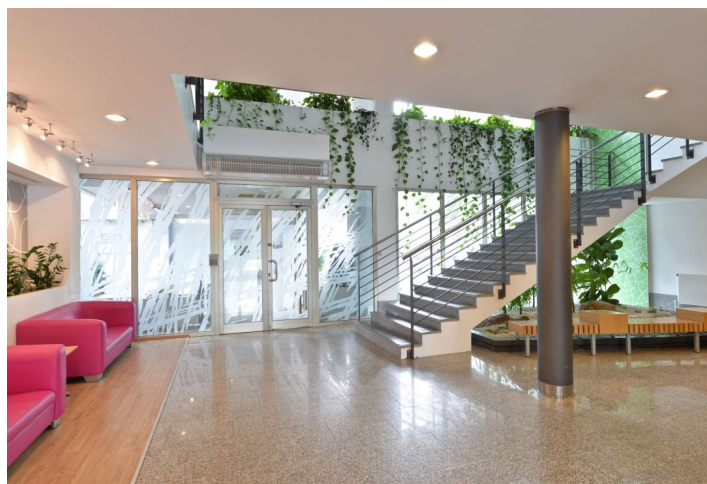
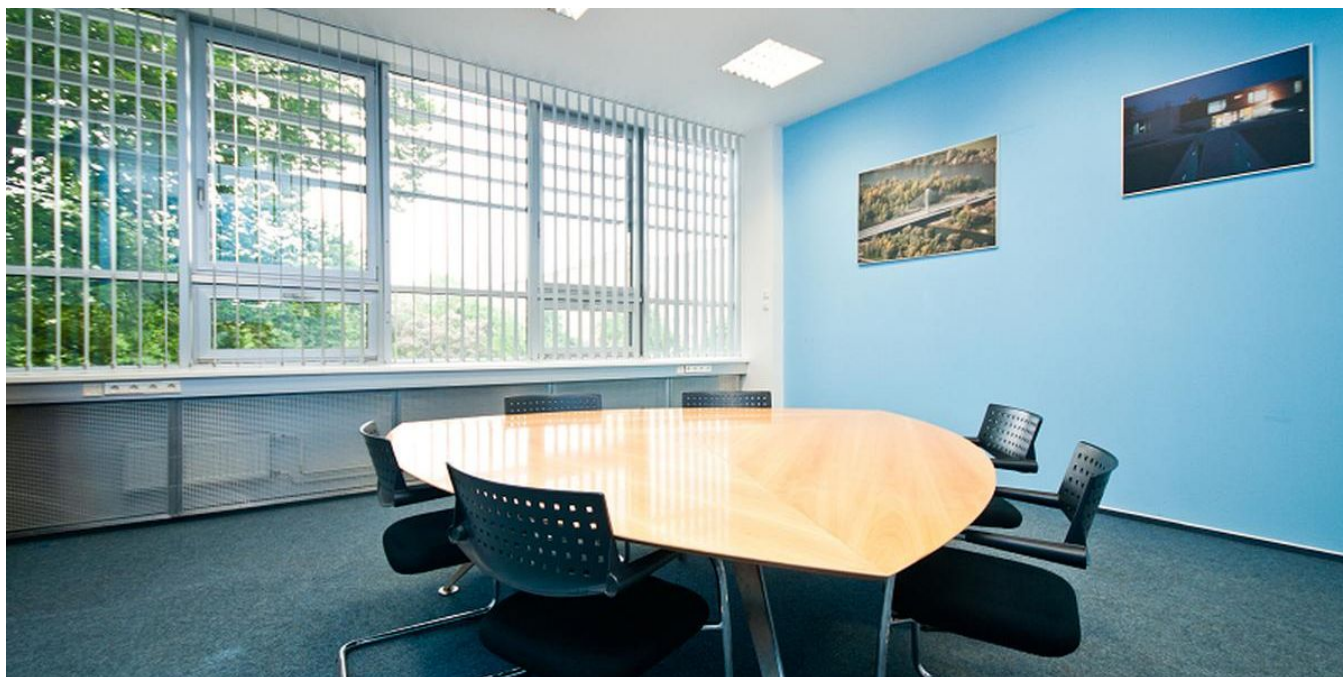




## Office space

Rented

Prague 10, Vršovice, Kubánské náměstí





## Office space

Prague 10, Vršovice, Kubánské náměstí

Rented

Service price	174 CZK monthly per m <sup>2</sup>
Available area	230 m <sup>2</sup>
Cellar	-
Parking	EUR 90 / pp / month
PENB	B
Reference number	19098

Office premises on the 2nd floor of a seven-story administrative building, with excellent parking opportunity, located on Prague 10.

### Location:

Good accessibility by car and public transportation – in a close vicinity of tram stations, within walking distance (ca. 10 minutes) of metro station Strašnická (line A), good connection to the southern arterial road (Jižní spojka), D1 and D11 motorways.

### Features and Services:

- 24/7 Access
- Air Conditioning
- Lifts
- Monitoring
- Openable Windows
- Parking
- Parking Ratio
- Reception
- Security
- Suspended Ceiling

Rental and service charges listed without VAT. Lessee pays no commission.

