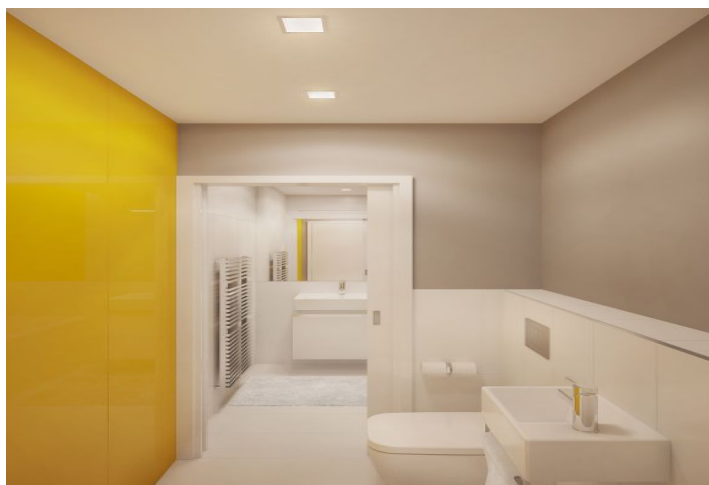




Apartment One-bedroom (2+kk)

Sold

107 m², Prague 10, Vršovice





Apartment One-bedroom (2+kk)

Sold107 m², Prague 10, Vršovice

Total area	107 m ²
Garden	60 m ²
Parking	Garage parking space at extra cost
Garage	Yes
Cellar	Yes
PENB	B
Reference number	19118

* Area of the unit according to the Civil Code. The area consists of the sum total area of the entire unit bounded by perimeter walls.

One-bedroom apartment with a terrace and garden on the ground floor of an emerging development project, part of a closed unconventional building situated in an attractive location on the border of Vinohrady and Vršovice quarter. Within easy reach of the center; all amenities nearby.

The layout of the apartment offers an entrance hall, open-plan living room with kitchen and dining area and with access to the south-west oriented garden and terrace, bedroom and bathroom with shower and toilet.

The apartment features **wood parquet flooring** and ceramic tiles, wooden windows with double glazing, French windows, **fire and security entrance doors**. The purchase price includes **a storage unit** designed, among other things for storage of garden tools and seasonal furniture; parking will be possible in the **underground garage**.

Vršovice is a popular, emerging neighborhood, currently undergoing a wider neighborhood improvement, with the aim of creating a greener and more pleasant living environment. The location already has full public amenities - kindergartens, elementary and grammar schools, cafes, restaurants, Eden shopping center, a sports hall, swimming stadium. Bus stop around the corner, 3 minute walk to Koh-i-noor tram station.

The purchase price includes VAT therefore it is not subject to the property transfer tax.

Interior 46.91 m², 8.97 m² terrace 51.14 m² garden, 2.8 m² outdoor storage room.

The development project offers 1 to 5-bedroom units. Completion is scheduled for mid 2017. For more information and a list of units available, please contact our office.



Apartment One-bedroom (2+kk)

107 m², Prague 10, Vršovice

Sold

