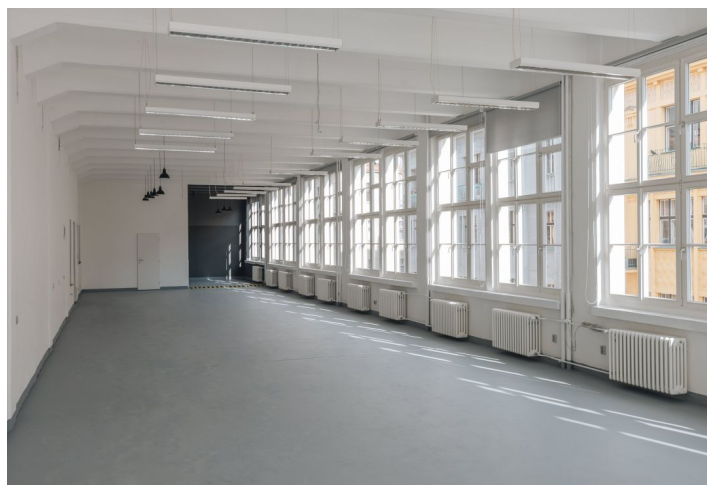




Office space

Rented

Prague 7, Holešovice, Františka Křížka



**Office space****Rented**

Prague 7, Holešovice, Františka Křížka

Service price	90 CZK monthly per m ²
Available area	314 m ²
Cellar	-
Parking	CZK 3 000 / ps / month
PENB	G
Reference number	19201

Unconventional office space for lease on the 1st floor of an industrial building in a location characterized by excellent civic amenities, rich cultural life and a wide range of opportunities for active recreation in the nearby Letenské sady or Stromovka Park. The space is divided into 3 rooms, a large hall, a fully equipped kitchen and smaller separate rooms. There is also a small storage room. Own sanitary facilities including shower.

Location:

Good transport accessibility - the Vltavská metro station (line C) is nearby and the Strossmayerovo náměstí tram stop is just a few minutes' walk from the building.

Features and Services:

- Central reception
- 24-hour security
- Parking in the courtyard
- Social facilities
- Kitchenette
- Elevator

Rental and service charges listed without VAT. Lessee pays no commission.

