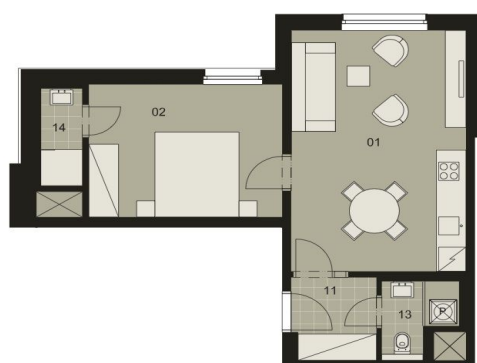




## Apartment One-bedroom (2+kk)

€ 156 617 | CZK 3 870 000

48 m², Prague 4, Podolí, Sinkulova





## Apartment One-bedroom (2+kk)

€ 156 617 | CZK 3 870 000

48 m², Prague 4, Podolí, Sinkulova

Total area	48 m²
Parking	Yes
Garage	Yes
Cellar	-
PENB	G
Reference number	19219

Bright studio apartment situated on the fourth floor of an unconventionally conceived emerging project with underground garage, which is located close to Vysehrad and the Vltava River, on a quiet street in a popular residential area of Prague 4 - Podolí. Comfortable living in a small, cozy residence by a popular design studio, which offers other units of sizes from 1-bedroom to 4-bedroom.

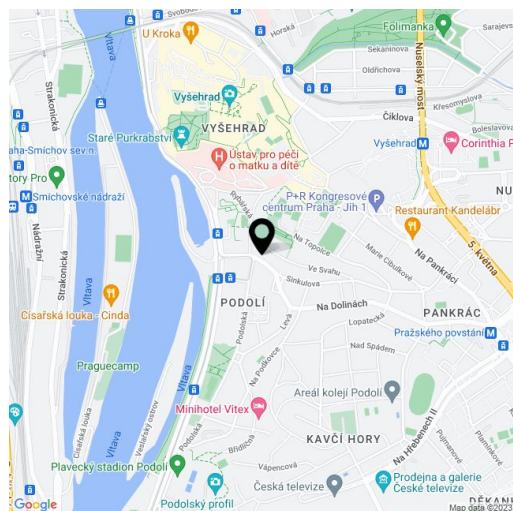
The layout of this studio features a living room with kitchen corner and dining area, bedroom with en-suite bathroom (shower and sink), separate toilet and hall with built-in wardrobe

All apartments are equipped to a **high standard** - wooden floors of bleached oak, large format wooden windows, sliding wooden doors/with internal hinges, bathroom appliances **Laufen, Grohe and Huppe**.

The project is located in a **popular residential location** with full amenities and excellent access to the city center thanks to nearby Podolská vodárna tram and bus stops. In the surroundings you will find a nursery and primary school, indoor and outdoor swimming pools, tennis courts, agility park, rowing club, golf course in neighboring Hodkovičky, cafes, restaurants and **park directly related to the Vyšehrad gardens**.

Please contact us for the current list of vacant apartment units.

Interior 47.87 m²



\* Area of the unit according to the Civil Code. The area consists of the sum total area of the entire unit bounded by perimeter walls.