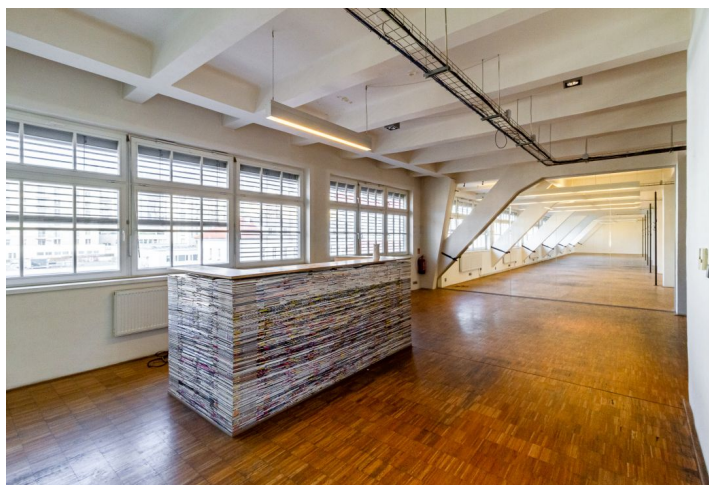
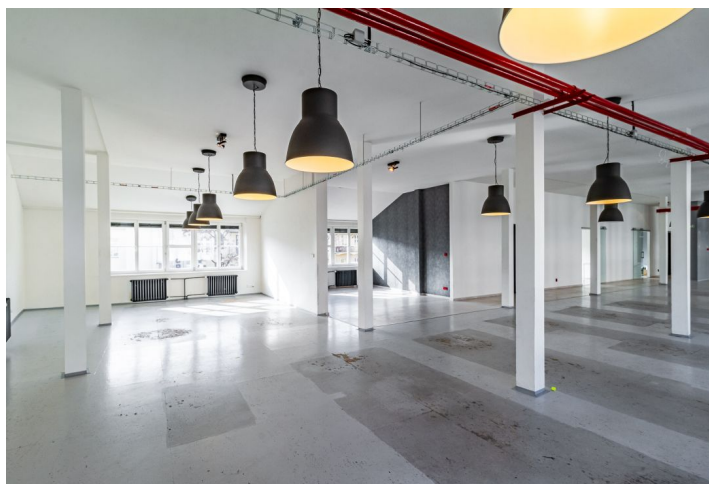




Office building

210 m², Prague 5, Smíchov, Drtinova

Rented





Office building

210 m², Prague 5, Smíchov, Drtinova

Rented

Service price	80 CZK monthly per m ²
Total building area	14 500 m ²
Tenant consumption	—
Parking	Yes
Parking service charges	—
Parking ratio	—
Certification	—
PENB	G
Reference number	19270

Complex of industrial buildings with non-traditional office space for lease in Prague 5 near one of Prague's shopping centers within a 2-minute walk. There is a separate reception and a 24-hour central reception at the main entrance. The area is guarded by a camera system. Possibility of parking in the yard.

Location:

Great transport accessibility by car and public transport. Tram and bus stops, metro station Anděl (line B) and train station are nearby.

Features and services:

Separate reception
24-hour central reception
CCTV
Parking in the yard
Kitchens, toilets

Rental and service charges listed without VAT. Lessee pays no commission.



Office building

210 m², Prague 5, Smíchov, Drtinova

Rented

