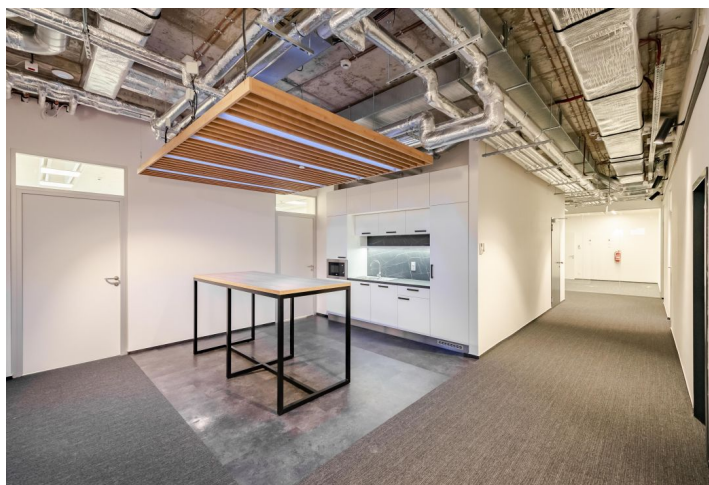




# Office building

Prague 7, Holešovice, Argentinská

Ask for price



**Office building**

Prague 7, Holešovice, Argentinská

**Ask for price**

Total building area	6 014 m <sup>2</sup>
Tenant consumption	—
Parking	2 700 CZK
Parking service charges	—
Parking ratio	—
Certification	—
PENB	B
Reference number	19307

**New office building located on the corner of busy Argentinská Street. The project offers a fully flexible floor space of approximately 500 to 1,000 sq. m. with offices on each of the six above-ground floors.**

**Location:**

Very good connections to arterial roads, the Prague Ring Road, the Blanka tunnel, including access to the D1 and D8 highways. Close to the building there are multiple bus and tram stops as well as the Nádraží Holešovice metro station (line C), train station & bus stop.

**Facilities and services:**

24/7 central reception  
 Magnetic card access to the building  
 CCTV system monitoring the building and its surroundings  
 Flexible office space  
 Retail space on the ground floor  
 Storage areas (limited capacity)  
 Guest parking  
 Ground source heat pump  
 Interior blinds  
 Openable windows  
 Central air conditioning  
 Own copy centrum

Rental and service charges listed without VAT. Lessee pays no commission.



