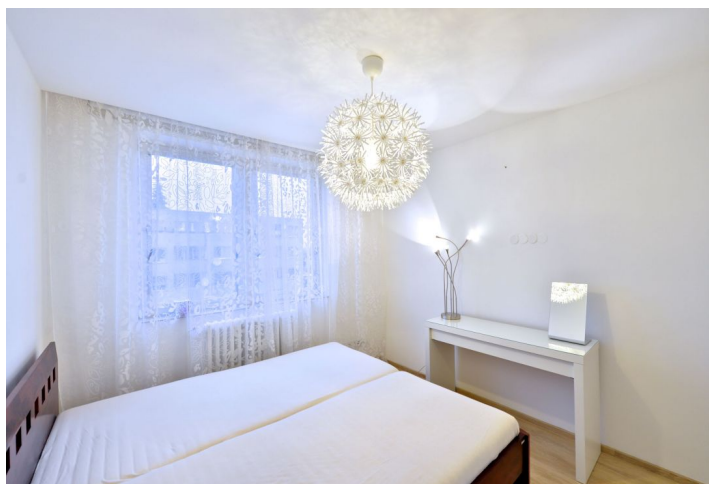
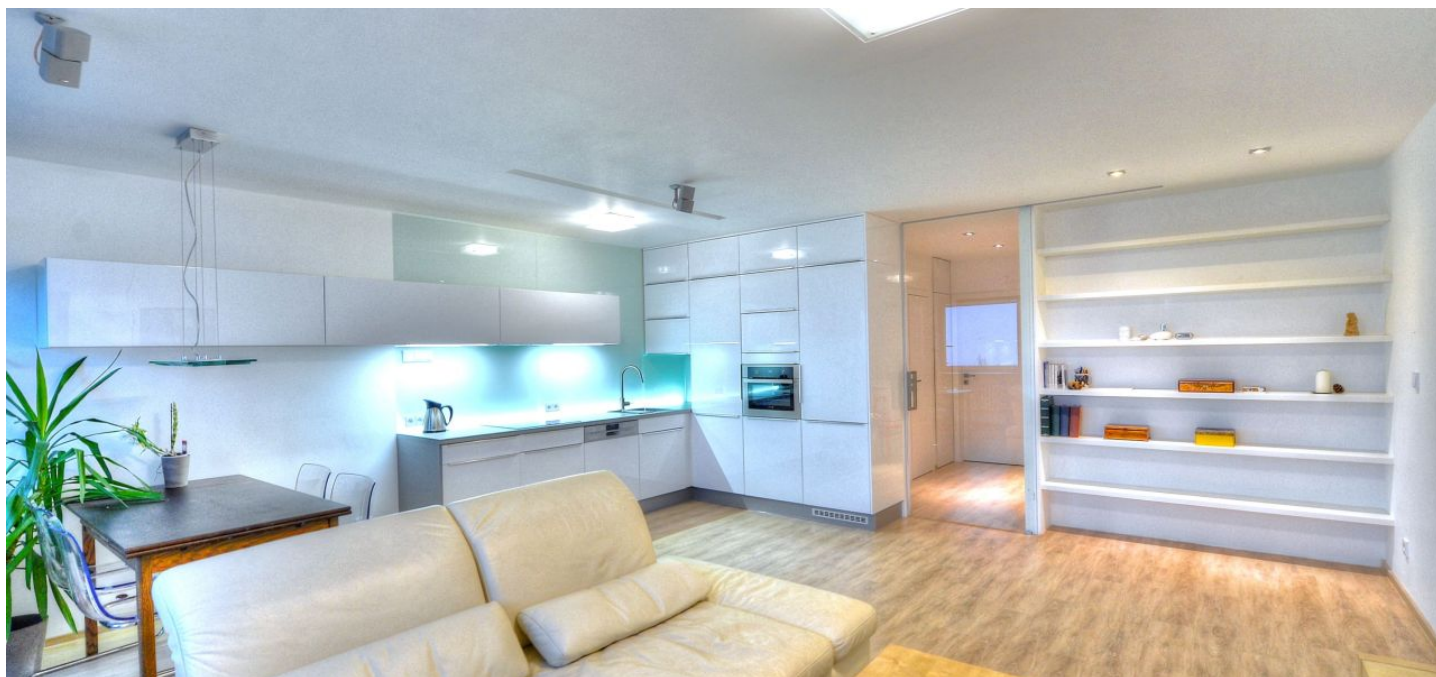




Apartment Two-bedroom (3+kk)

Rented

68 m², Prague 5, Barrandov, Lumierů





Apartment Two-bedroom (3+kk)

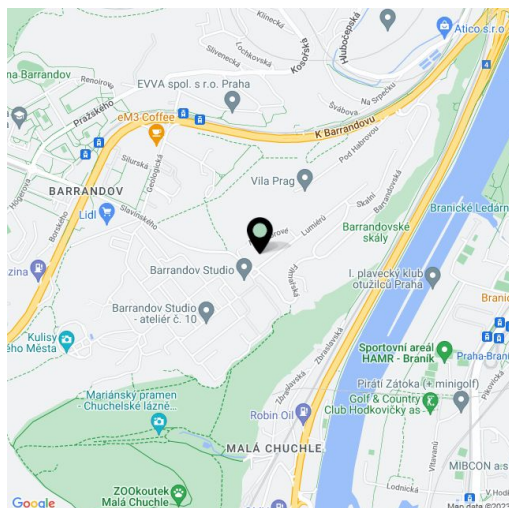
Rented68 m², Prague 5, Barrandov, Lumierů

Total area	72 m ²
Floor area*	68 m ²
Loggia	4 m ²
Parking	-
Cellar	-
PENB	G
Reference number	19316
Available from	Immediately

Furnished 2-bedroom flat with an enclosed balcony on the second floor of a well kept residential building with no lift. Situated in a quiet residential neighborhood in Barrandov, Prague 5, just steps from the Barrandov Film Studios. Regular bus connections to metro stations Smíchovské nádraží, line B, or Budějovická, line C.

The flat has two separate bedrooms, living room with a fully fitted open kitchen and the balcony offering far reaching green views, bathroom with tub, toilet with bidet shower, and entry hall.

Vinyl floors, French windows, built-in wardrobes, blinds, independent gas boiler, washer / dryer, dishwasher, microwave oven, induction cooktop, Internet, TV, audio entry phone. Parking on the street. Common building charges CZK 1800 per month, gas and electricity is paid separately.



* Area of the unit according to the Civil Code. The area consists of the sum total area of the entire unit bounded by perimeter walls.