



House Nineteen-bedroom (20+1)

Ask for price

960 m², Praha-východ, Říčany, Břeží





House Nineteen-bedroom (20+1)

[Ask for price](#)960 m², Praha-východ, Říčany, Březí

| | |
|------------------|-----------------------|
| Usable area | 960 m ² |
| Plot | 20 003 m ² |
| Foot print | 1 213 m ² |
| Garden | 18 790 m ² |
| Floor area | 860 m ² |
| Terrace | 100 m ² |
| Parking | Yes |
| Garage | Yes |
| Cellar | Yes |
| PENB | G |
| Reference number | 19376 |

Exceptional opportunity to buy a chateau with complete facilities including a separate butler's residence, stables for horses and a tennis court - located on 20,000 m² of land in Březí near Říčany, which features all amenities including the prestigious Open Gate elementary and secondary school. The chateau is about a 20 minutes drive from the center of Prague.

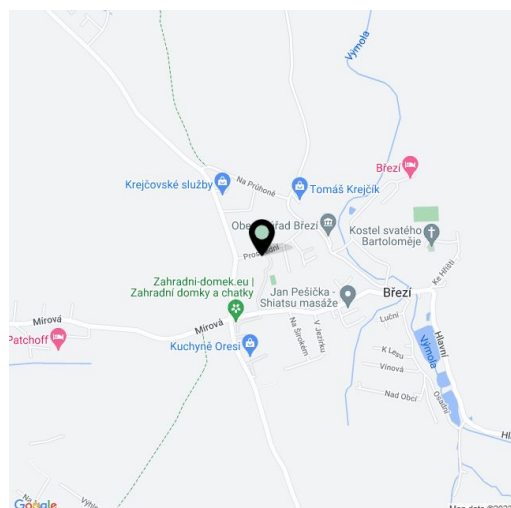
On the plot with two gateways are situated the main residential building, butler's residence, stables for 2 horses, gazebo and tennis court with facilities. The two-car garage has a heated driveway.

The main building is luxuriously equipped with large-format **granite / marble floors and tiles, marble fireplaces** and inlaid oak parquet. Heating is provided by a heat pump and two Veissmann gas boilers – floor heating in the majority of the house, radiators in rooms with parquet floors. Other facilities include **air-conditioning** in all rooms on the 2nd floor, elevator, fully automatic pool technology or security system with cameras and connection to a security service (with 3 minute arrival). Total of 9 bathrooms.

The butler's house has 2 bathrooms, a garage for 2 cars and gas heating. In the stables you can find a washroom for horses, a bathroom and a separate toilet - there is also the possibility to transform the space into a residential building. Next to the tennis court with EPDM surface is a small house with changing room and toilet, garden is automatically irrigated by rainwater from 65 m³ tank. The complex is connected to gas, electricity and sanitation, water supply system is provided by total of 3 wells. The house was completed in 2005.

Quiet location in absolute privacy on the outskirts of Březí. All services are available in neighboring Říčany - kindergartens, schools, gymnasium, swimming pool, library and Lihovar shopping center.

Built-up area 1,213 m², floor area of the main building 860 m², land 20,003 m²

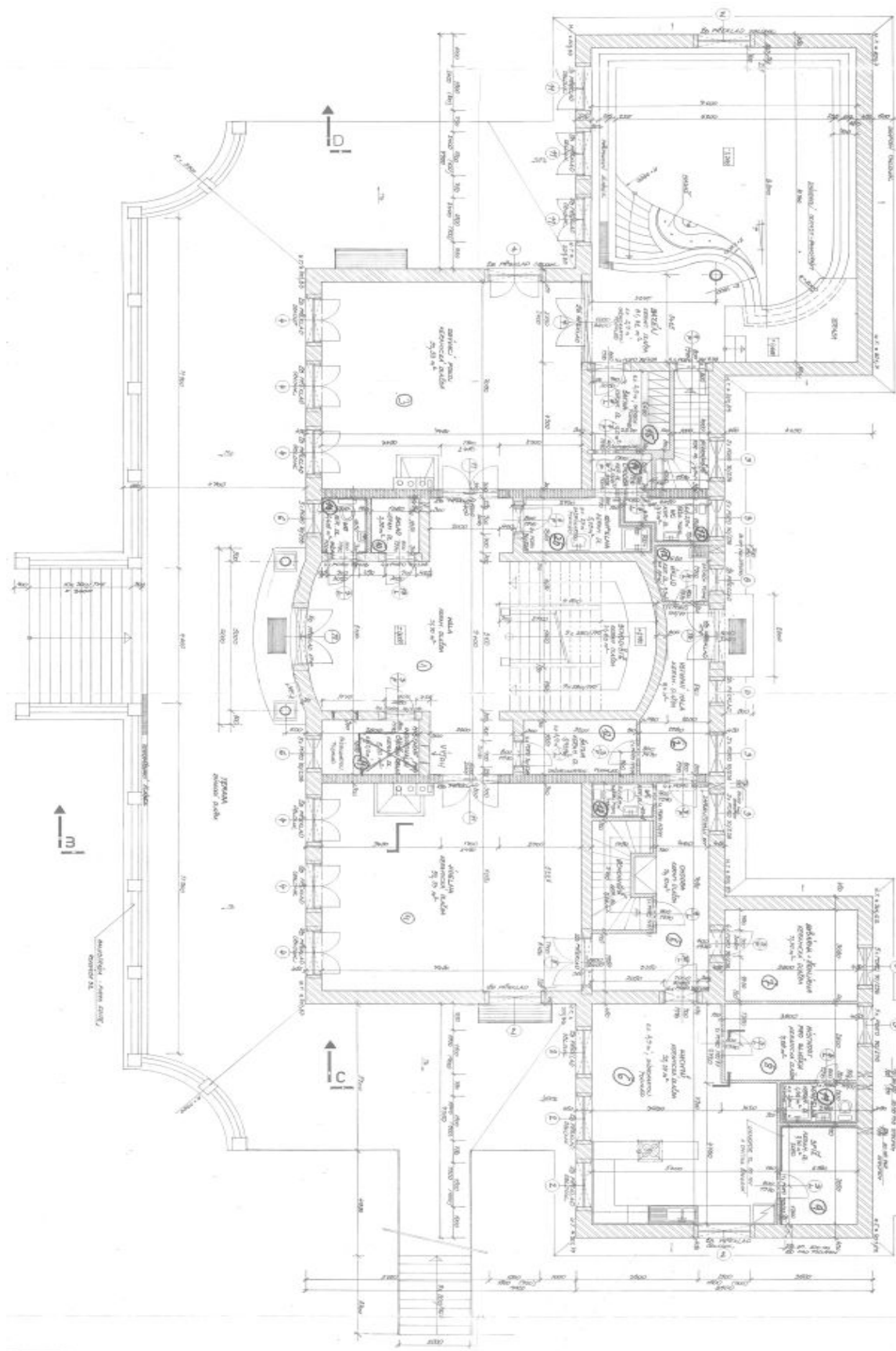




House Nineteen-bedroom (20+1)

Ask for price

960 m², Praha-východ, Říčany, Březi

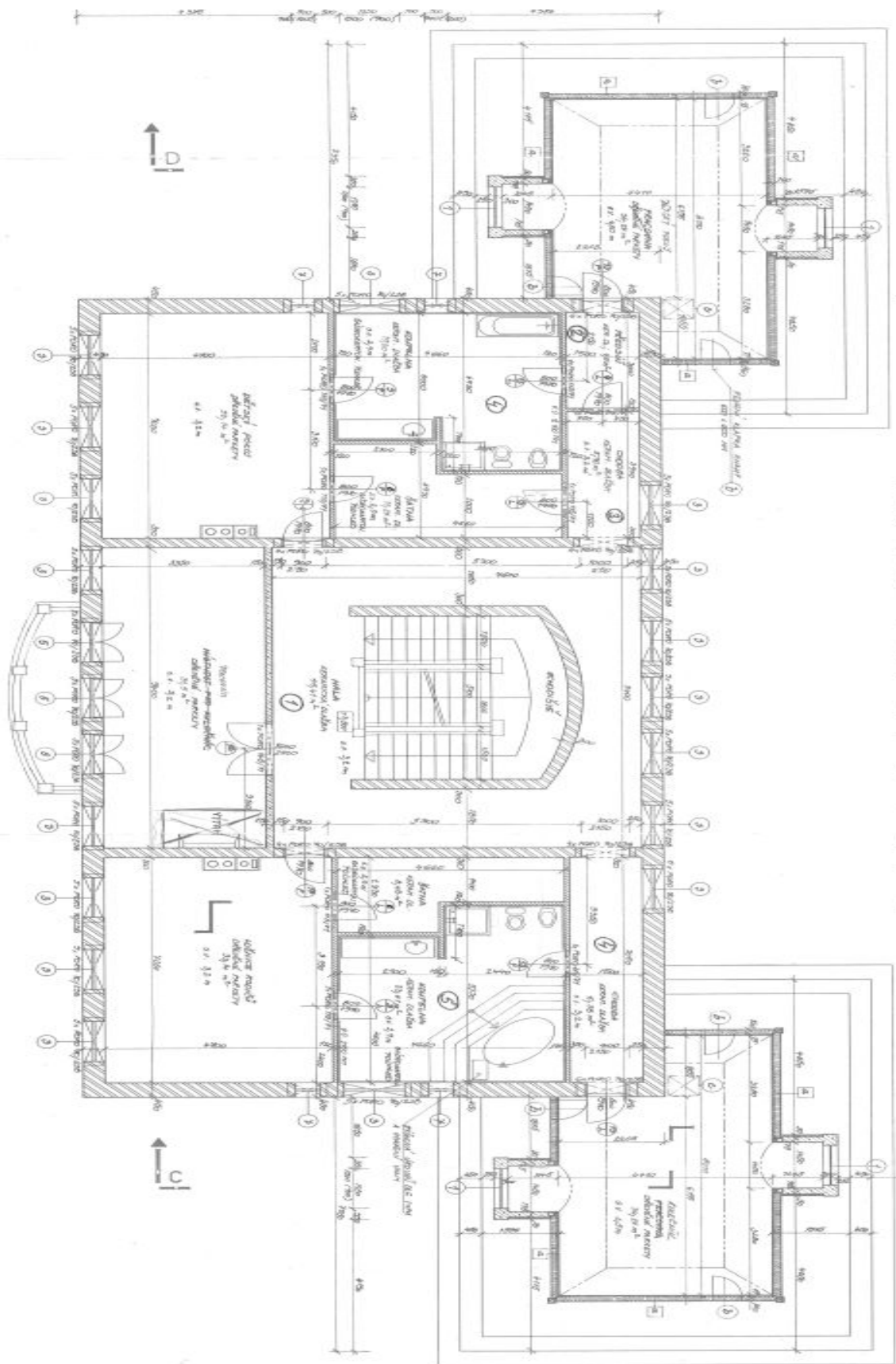




House Nineteen-bedroom (20+1)

Ask for price

960 m², Praha-východ, Říčany, Břežín

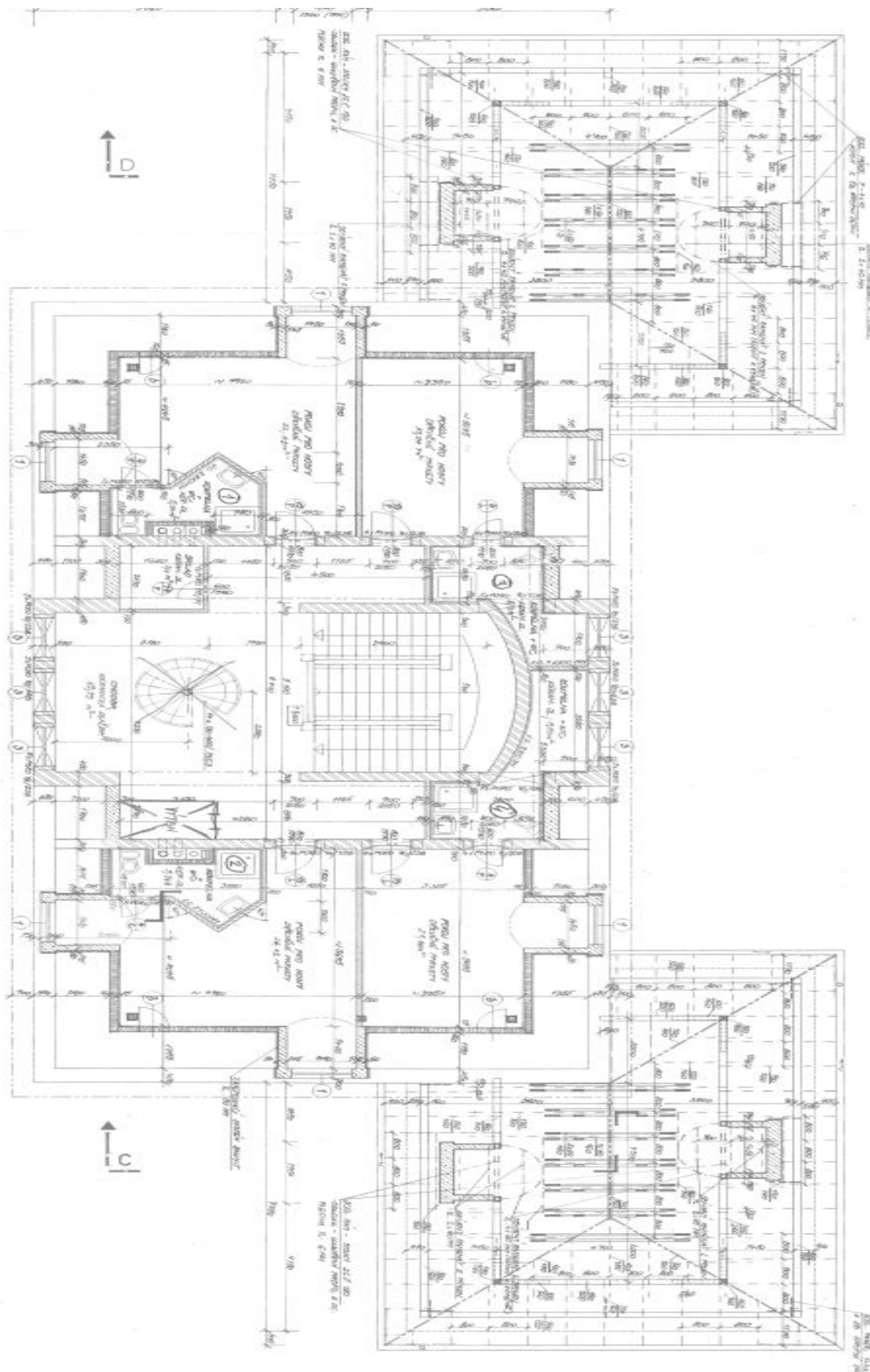




House Nineteen-bedroom (20+1)

Ask for price

960 m², Praha-východ, Říčany, Břeží





House Nineteen-bedroom (20+1)

Ask for price

960 m², Praha-východ, Říčany, Břeží

