



House Eleven-bedroom (12+kk)

Sold

340 m², Prague 6, Střešovice, Střešovická





House Eleven-bedroom (12+kk)

Sold340 m², Prague 6, Střešovice, Střešovická

Plot	885 m ²
Foot print	153 m ²
Garden	732 m ²
Parking	Yes
Garage	Yes
Cellar	Yes
PENB	G
Reference number	19439

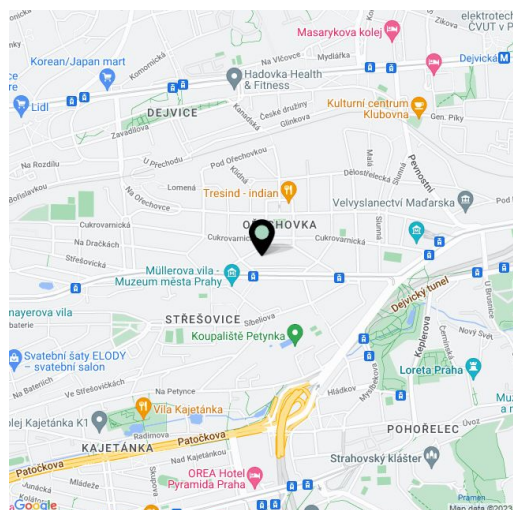
Beautiful villa in Ořechovka built during 1923-1924 by architect Franz Pfister, with views of the surrounding residences and mature greenery, complete with a raised terrace and a large landscaped garden. Suitable for family living or for representative office or embassy.

The house went through a careful complete reconstruction in 1995. It has 4 floors, 3 of which are currently used as office space, and the top floor as an one-bedroom flat. In the basement there are all utility rooms and facilities, plenty of storage space, a small kitchen and toilets. The Ground floor consists of 2 very spacious offices and 1 smaller space, separate men's and women's restrooms, a staircase hall and terrace overlooking the garden. On the first floor you will find a further five rooms, staircase hall with gallery and bathroom; the second floor features a cozy one-bedroom apartment.

Facilities include renewed wood parquet and casement windows, wooden interior and entrance doors, pool in the garden. The villa has a **garage for 1 car, additional parking spaces are available on the property.**

Prague's most prestigious residential location in close vicinity of Prague Castle, within easy reach of the center, tram stops, metro station and all amenities.

Interior 340 m², built-up area 153 m², garden 732 m², plot 885 m².



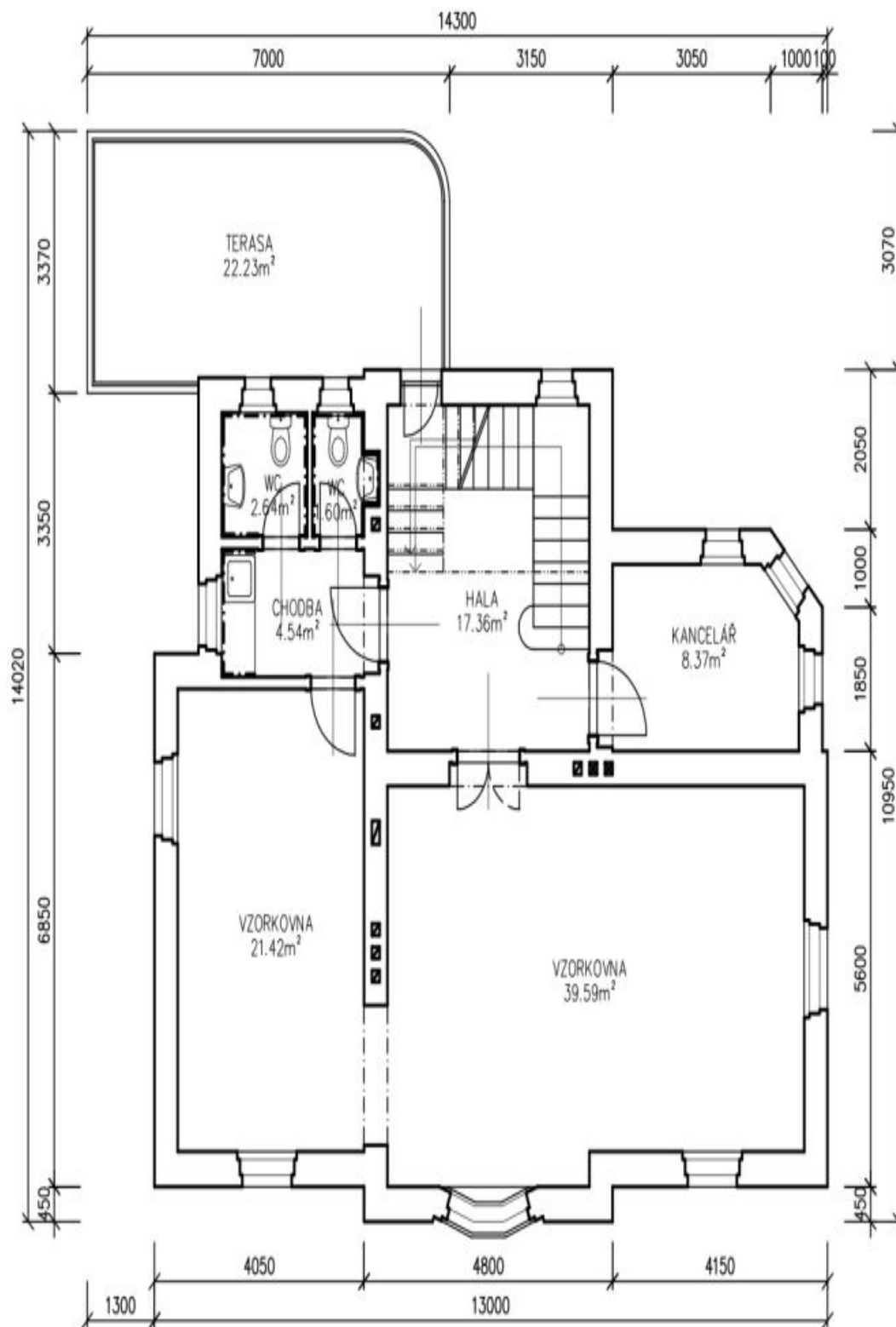


House Eleven-bedroom (12+kk)

340 m², Prague 6, Střešovice, Střešovická

Sold

1NP - STÁVAJÍCÍ STAV

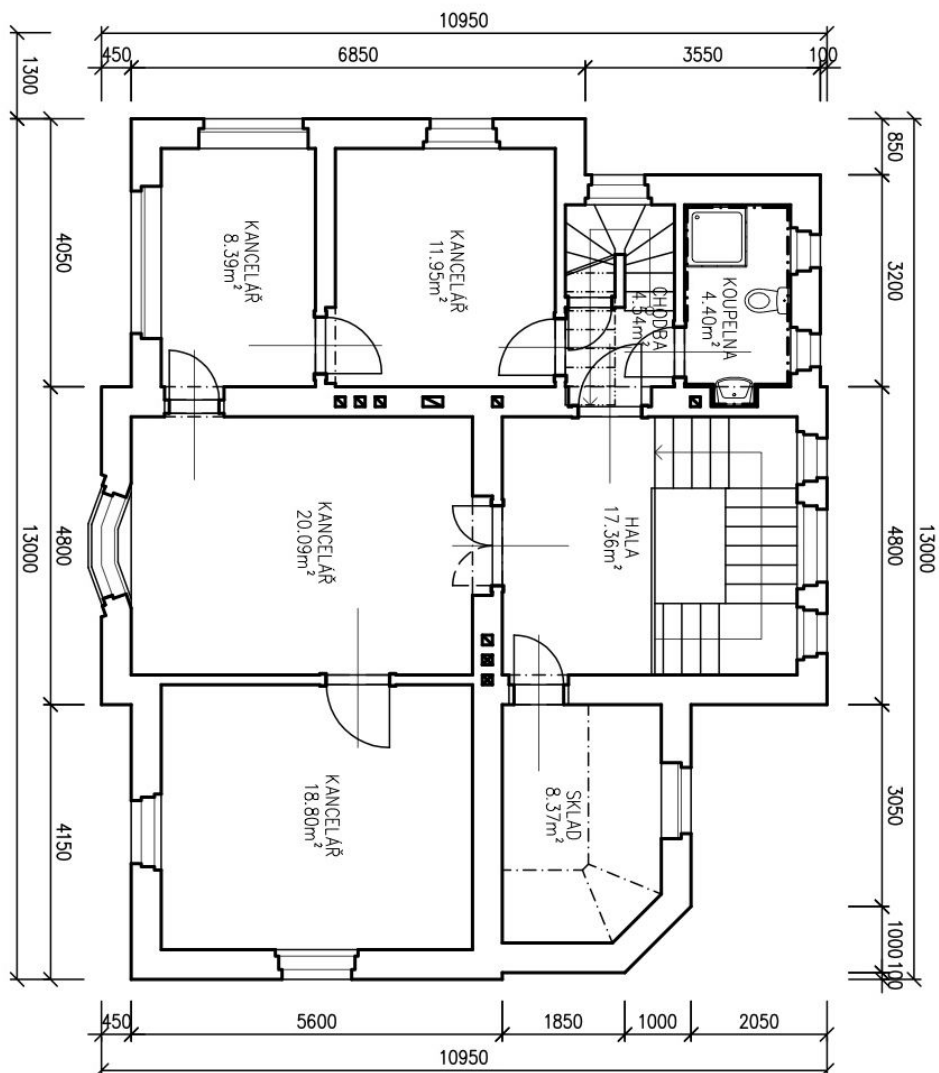




House Eleven-bedroom (12+kk)

340 m², Prague 6, Střešovice, Střešovická

Sold



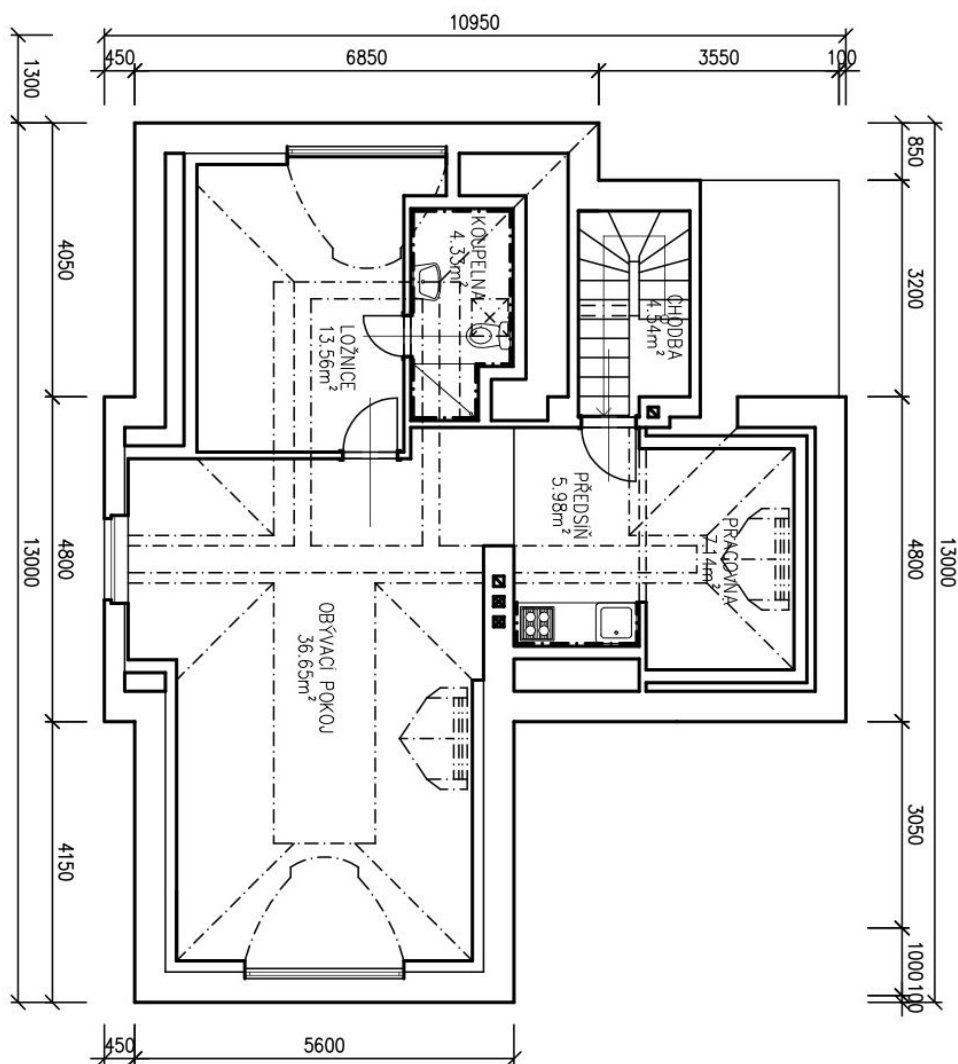
2NP – STAVAJÍCÍ STAV



House Eleven-bedroom (12+kk)

340 m², Prague 6, Střešovice, Střešovická

Sold



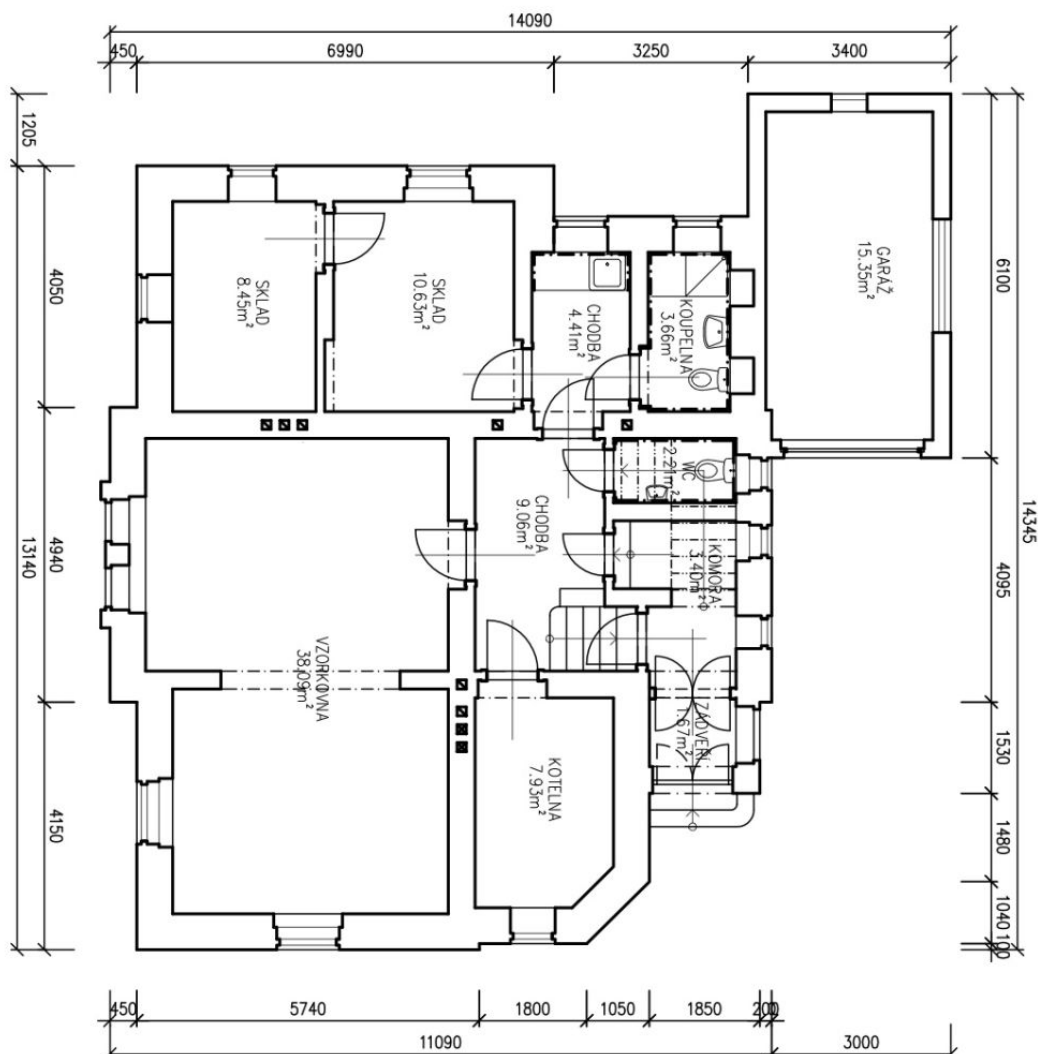
3NP – STÁVAJÍCÍ STAV – BEZ ÚPRAV



House Eleven-bedroom (12+kk)

340 m², Prague 6, Střešovice, Střešovická

Sold



1PP – STAVAJÍCÍ STAV