



Retail space

Rented

Prague 1, Nové Město, Jungmannova

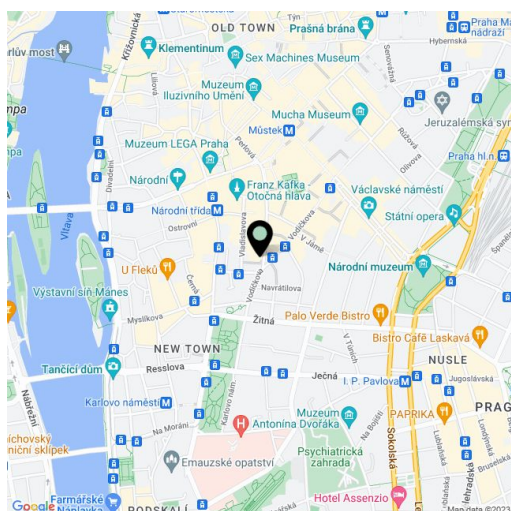
Service price	200 CZK monthly per m ²
Available area	678 m ²
Parking	EUR 219 / ps / month
PENB	B
Reference number	19481

Retail space for lease in the building originally built in Art Nouveau style in the beginning of 20th century. Interconnection of fully redeveloped historic building and newly built extension in the courtyard offers architecturaly unique interior with green areas and terraces. The building has been awarded with a LEED Platinum certification. The retail space has also a terrace approx. 40,96 sq. m.

Location:

The exclusivity of space is enhanced by an attractive location in the financial and commercial center, with private parking. Excellent access by public transport, in close vicinity to the metro station Národní třída (line B) and tram line hub, within walking distance of the Můstek (lines A, B) metro station.

Rental and service charges listed without VAT. Lessee pays no commission.

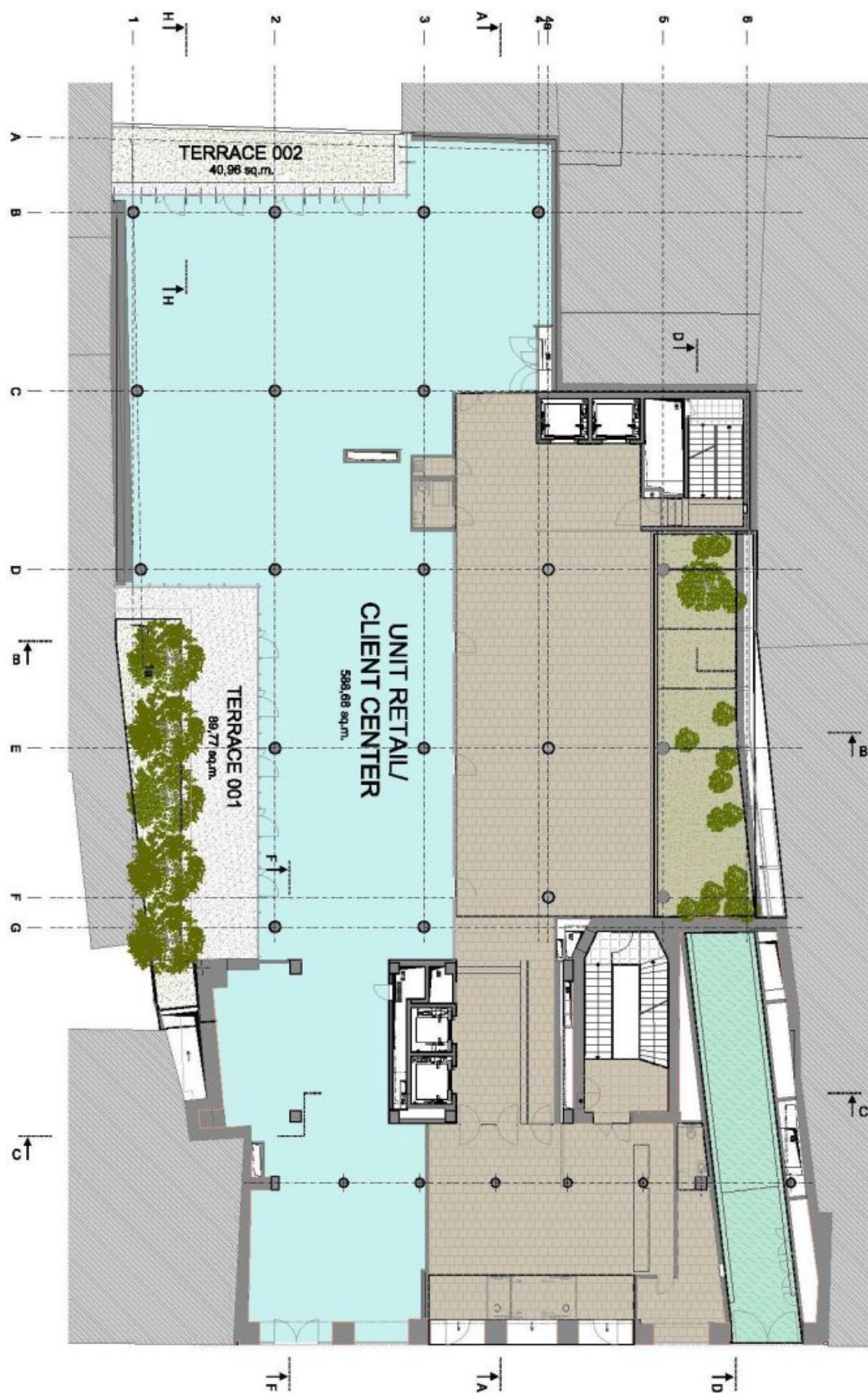




Retail space

Prague 1, Nové Město, Jungmannova

Rented



SUBTOTAL AREA: 599,68 sq. m.



Retail space

Prague 1, Nové Město, Jungmannova

Rented



FLOOR FINISHES:

	ARTIFICIAL STONE
	CARPET
	LINOLEUM ANTISTATIC PVC
	CERAMIC TILES
	EPOXY-POLYURETHANE SCRIBED
	TERRAZZO
	WOOD
	CONCRETE
	GREENERY
	NO FINAL FINISHES

