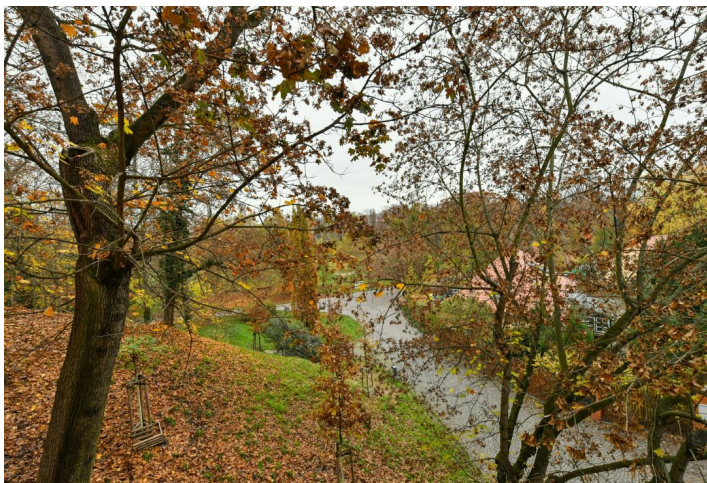




## Apartment Two-bedroom (3+1)

Rented

115 m<sup>2</sup>, Praha 6, Bubeneč, Gotthardská





## Apartment Two-bedroom (3+1)

Rented

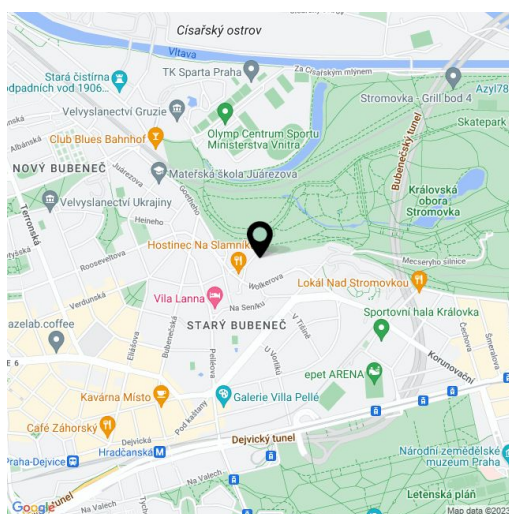
115 m<sup>2</sup>, Praha 6, Bubeneč, Gotthardská

Total area	115 m <sup>2</sup>
Parking	Parking available at CZK 2.500/month.
Cellar	-
PENB	G
Reference number	1950
Available from	Immediately

Greatly benefiting from the perfect location right next to the Stromovka Park and beautiful green views, this is a fully renovated 2-bedroom 2-bathroom modern flat. Situated on the second floor of a completely refurbished 19th century building with a new lift. Located in the prestigious embassy district of Bubeneč, a minute walk to a bus stop, a ten minute walk to Hradčanská and Dejvická metro stations with full amenities in the area. Convenient to the international schools in Prague 6, and to the airport.

The interior features a large living room, a fully fitted kitchen, two bedrooms, two shower bathrooms (one en-suite), utility room, a guest toilet, and a spacious entry hall.

Park views, solid wood parquet floors, tiles, security entry door, gas boiler, toilet with bidet shower in each bathroom, audio entry phone. Parking can be arranged at CZK 2.500/month. Deposit for common building charges CZK 2.500/month. Electricity and gas are billed separately.



\* Area of the unit according to the Civil Code. The area consists of the sum total area of the entire unit bounded by perimeter walls.



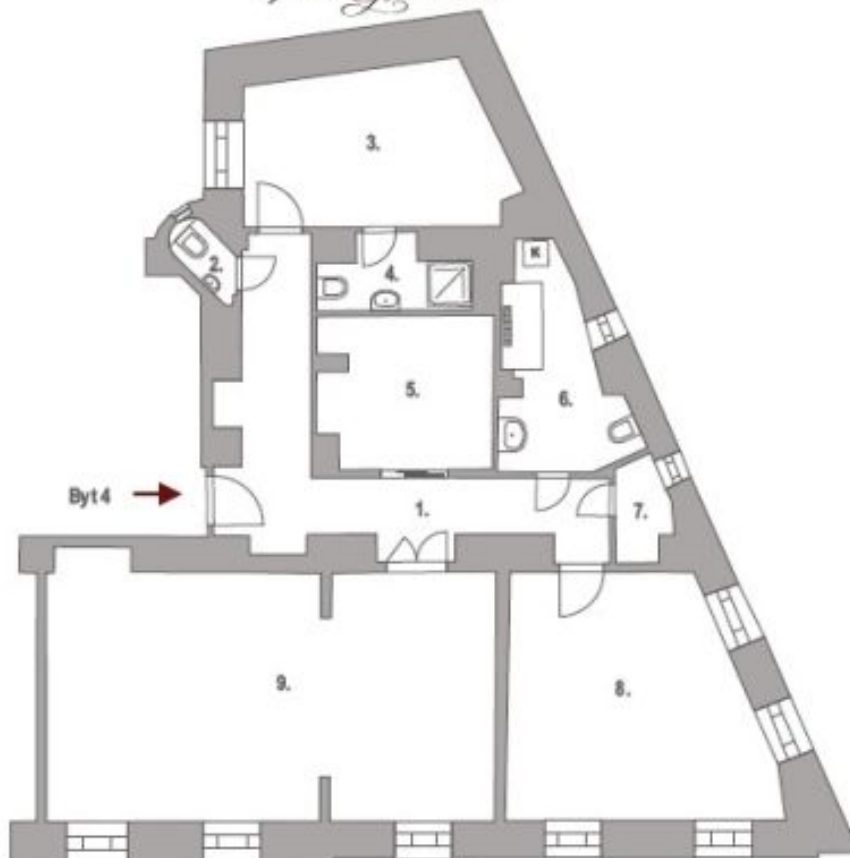
## Apartment Two-bedroom (3+1)

115 m<sup>2</sup>, Praha 6, Bubeneč, Gotthardská

Rented



*Villa Gotthard*



2.PATRO



**BYT 4 3+1**



Byt 4	3.NP
1. chodba	15,2 m <sup>2</sup>
2. WC	0,9 m <sup>2</sup>
3. pokoj	12,5 m <sup>2</sup>
4. koupelna	2,7 m <sup>2</sup>
5. kuchyň	8,0 m <sup>2</sup>
6. koupelna	6,5 m <sup>2</sup>
7. komora	1,7 m <sup>2</sup>
8. pokoj	19,7 m <sup>2</sup>
9. obýv.pokoj s jídelnou	37,3 m <sup>2</sup>
<b>Celková užitná plocha bytu</b>	<b>104,5 m<sup>2</sup></b>
<b>Celková podlahová plocha</b>	<b>114,8 m<sup>2</sup></b>