



Office space

Prague 7, Bubeneč, U Studánky

Sold





Office space

Prague 7, Bubeneč, U Studánky

Sold

Available area	167 m ²
Tenant consumption	—
Parking	—
Parking service charges	—
Parking ratio	—
Certification	—
PENB	G
Reference number	19550

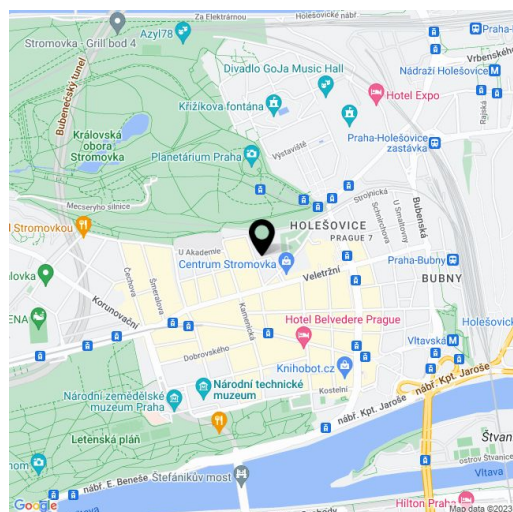
Modern air-conditioned premises for dentists' offices located in the basement of a completely renovated building in Prague 7 - Bubeneč, near a tram stop with easy access to the Vltavská metro station.

The interior offers a representative waiting room, 3 surgery rooms, OPG/X-ray room, sterilization room, utility room, office with a terrace, a kitchen and facilities for employees. All surgery rooms have **natural daylight** from windows. Access directly from the street, separately from the common areas of the house.

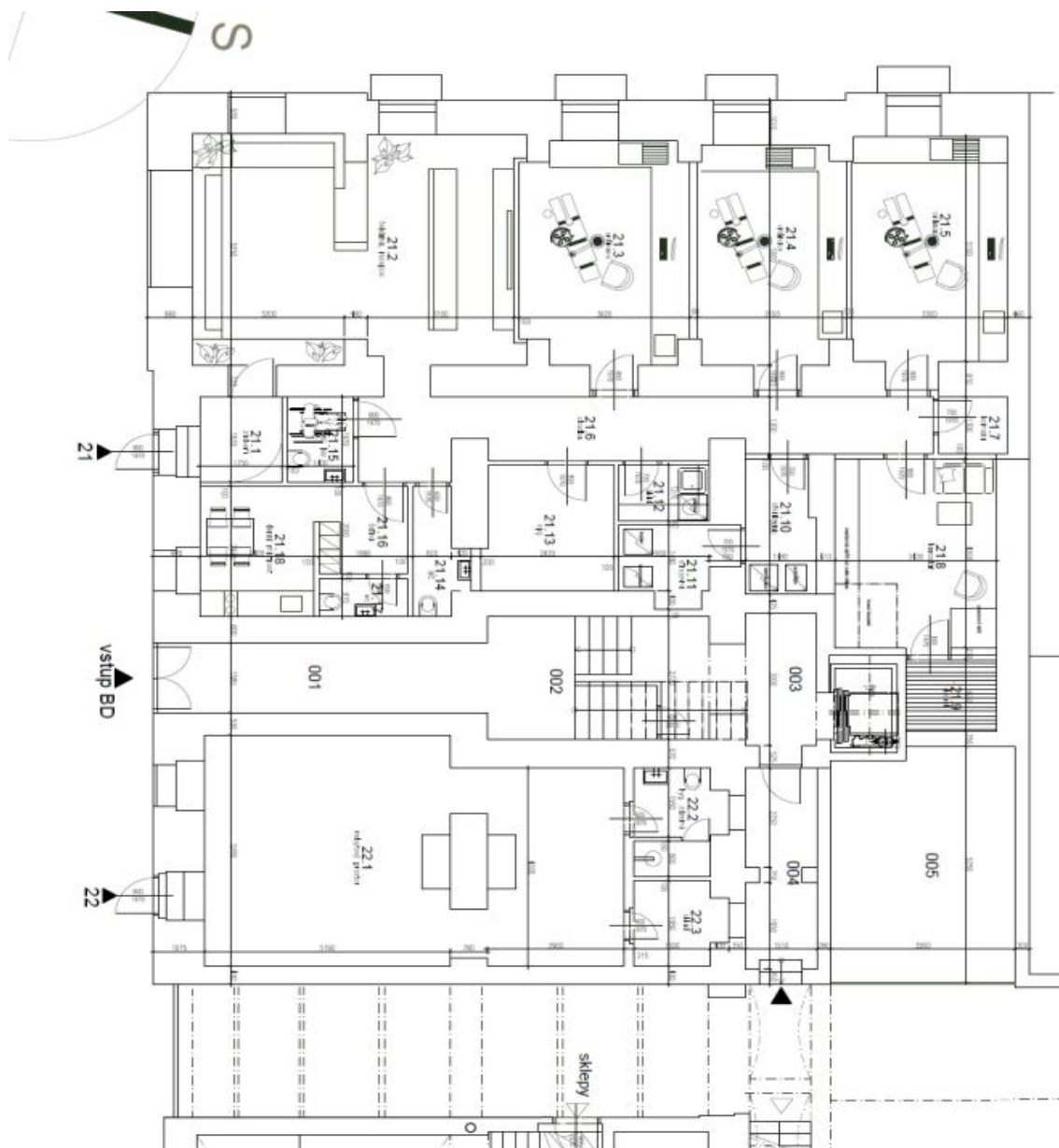
All surgery and waiting room are equipped with **air-conditioning, TV, LAN, Wi-Fi and audio distribution systems, alarm, and custom-made furniture** except for the dental chairs. Possibility to buy or rent parking spaces in the courtyard.

Location with good transport links and all necessary amenities such as restaurants, cafes and shops nearby.

Interior 167 m².







TABULKA MÍSTNOSTÍ IPP				
Číslo místnosti	Název	Plocha [m ²]	Pozn.	
000	VÝTĚH			
001	HLAVNÍ VSTUP	11		
002	SCHODIŠTĚ	13		
003	CHODBA	6,08		
004	CHODBA	7		
005	GARAŽ	20,4		
	CELKEM	57,5		
STOMATOLOGICKÉ CENTRUM				
21.1	ZÁDVEŘÍ	4,5		
21.2	ČEKÁRNA RECEPCE	36,88		
21.3	ORBNICE	18,03		
21.4	ORBNICE	15,88		
21.5	ORBNICE	17,54		
21.6	CHODBA	17,09		
21.7	KOJICNA	1,94		
21.8	KANCELÁŘ	14,77		
21.9	DVOREK	3,1		
21.10	STERILOVNA	4,37		
21.11	STRUČKOVNA	3,88		
21.12	ÚKLID	2,41		
21.13	SNÍMKOVNA ORG	7,56		
21.14	WC MUŽI	2,57		
21.15	WC ŽENY + INVALIDE	3,3		
21.16	ŠATNA PERSONAL	3,51		
21.17	WC PERSONAL	1,54		
21.18	DEKNI MÍSTNOST	7,21		
	CELKEM	162,4		-13,10
NEBYTOVÝ PROSTOR				
22.1	NEBYTOVÝ PROSTOR	42,89		
22.2	HYGIENICKÉ ZÁZEMÍ/ NB	4,31		
22.3	SKLAD/ NB	3,61		
	CELKEM	50,8		
CELKOVÁ POULÁHOVÁ PLOCHA				270,7