



Apartment One-bedroom (2+kk)

Sold

57 m², Prague 5, Smíchov, Pecháčkova





Apartment One-bedroom (2+kk)

Sold57 m², Prague 5, Smíchov, Pecháčkova

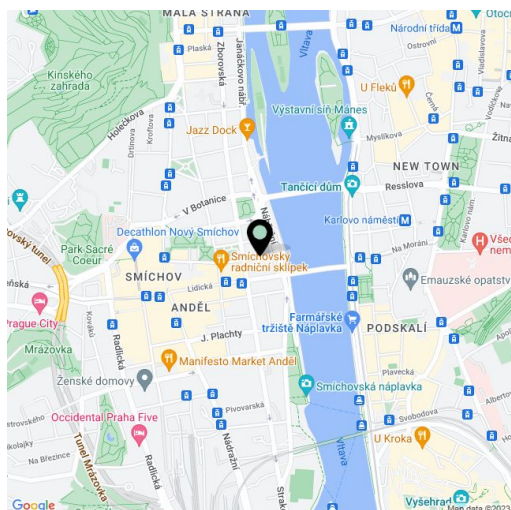
Total area	58 m ²
Floor area*	57 m ²
Balcony	1 m ²
Parking	890 000
Garage	Yes
Cellar	Yes
PENB	G
Reference number	19592

Bright new apartment with balcony, undergoing along with the whole building a complete renovation, in which emphasis will be placed on preserving original features - just a few steps from the Vltava riverbank, Kinského zahrady gardens and the Nový Smíchov shopping center.
Completion date set for Q4 2015.

This 1st floor apartment will be completed using high quality materials, with preparation for a kitchen. The layout will offer a central hall with built-in wardrobes, a bathroom with bathtub and toilet, an open-plan living room with space for kitchen corner and dining room, and a bedroom with balcony.
The purchase price includes a garage parking space and a cellar.

The location offers all amenities, tram and metro B within walking distance. Nearby you will find numerous cafes and restaurants, the BestFit Studio Smíchov fitness center, and a park at 14. října square.

Interior 56.23 m², balcony 1.80 m², cellar 1.72 m².



* Area of the unit according to the Civil Code. The area consists of the sum total area of the entire unit bounded by perimeter walls.



Apartment One-bedroom (2+kk)

57 m², Prague 5, Smíchov, Pecháčkova

Sold

2.NP BYT Č. 2a / 2+KK 56,23 m²

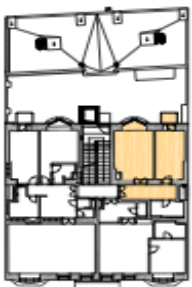
01	CHODBA	9,53m ²
02	OBÝV. POKOJ+KUCH.	24,12m ²
03	POKOJ	16,49m ²
04	KOUPELNA + WC	6,09m ²
CELKOVÁ PLOCHA BYTU		56,23m ²
05	BALKON	1,80m ²

DISPOZICE BYTU



POLOHA BYTU V DOMĚ

PŮDORYS 2.NP



POHLED ULIČNÍ



POHLED DVORNÍ

