



House Six-bedroom (7+1)

316 m², Prague 6, Břevnov, Oddělená

Rented





House Six-bedroom (7+1)

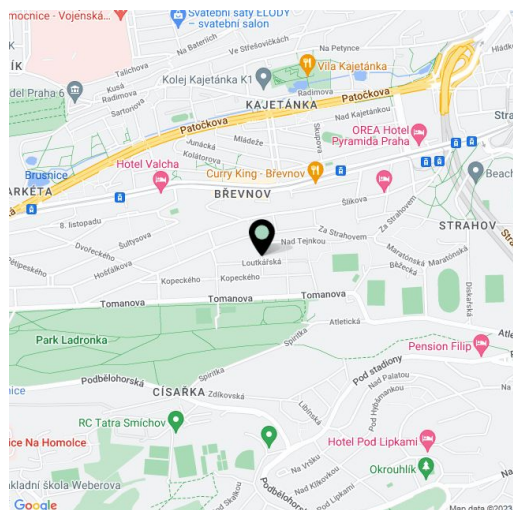
Rented316 m², Prague 6, Břevnov, Oddělená

Plot	1 000 m ²
Garden	700 m ²
Parking	Double garage.
Garage	Yes
Cellar	-
PENB	G
Reference number	1962
Available from	Immediately

Recently built 6-bedroom 4-bathroom villa with a 700 m² landscaped garden in a quiet green Prague 6 neighborhood close to the popular Ladronka Park. Most suitable for residential purposes of diplomats or top executives with their families. Can be used as a company seat, too.

The 4-story villa has, on the upper ground floor, an entry hall, living room, fully fitted kitchen equipped with top stainless steel appliances, bathroom, and a guest toilet. The first floor offers a hall, 3 bedrooms, bathroom, and toilet. The attic comprises a hall, 2 more rooms (one is 34 m²), and bathroom with toilet. In the basement there is a double garage, boiler and storage rooms, and a separate guest suite consisting of 1 bedroom and bathroom with toilet.

Granite stairway, tile and oak parquet floors, balconies, satellite connection, two telephone lines, security alarm on each floor. Convenient to the city center, and with good connection to French and German schools, and to the airport. Utilities CZK 10,000/month.





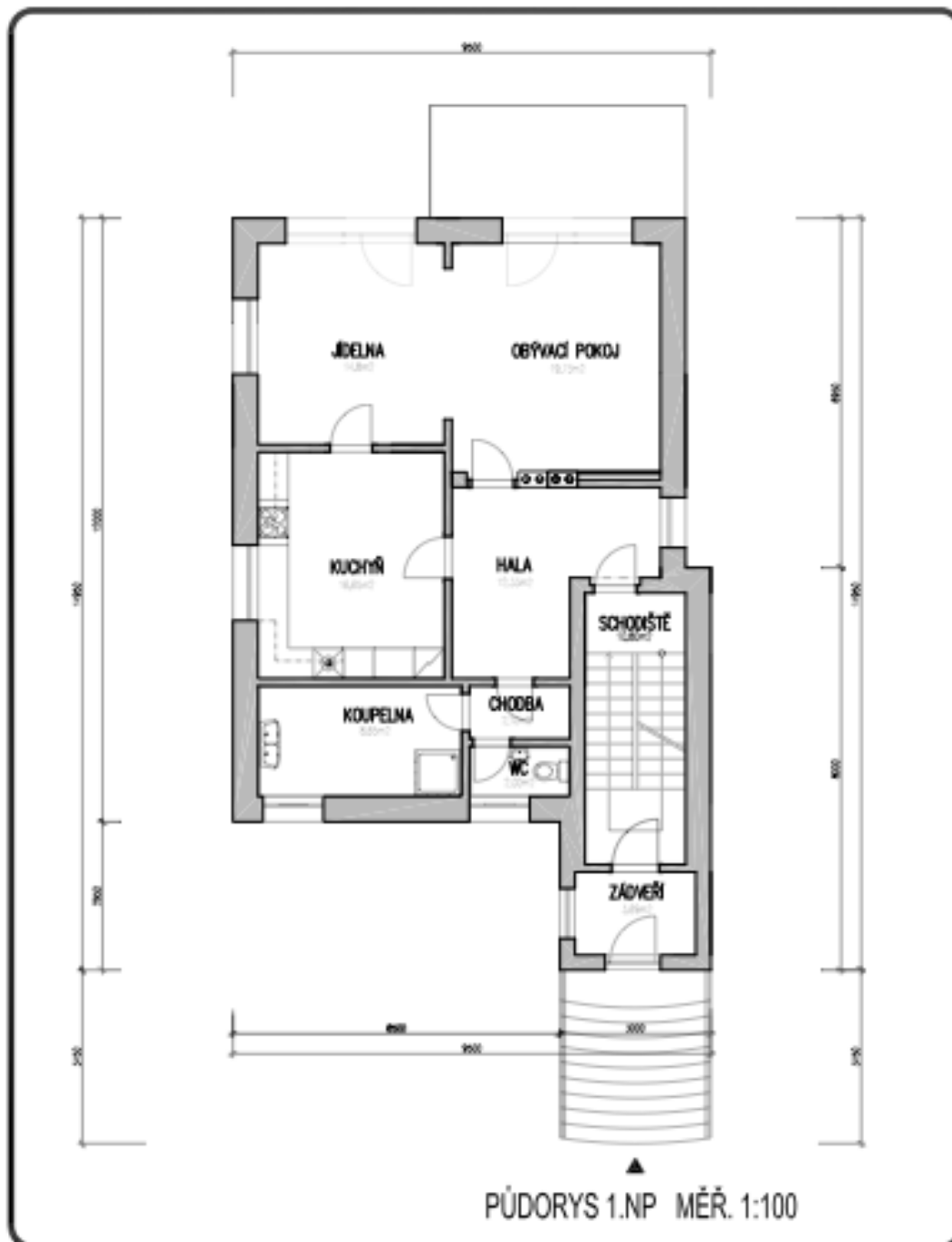
House Six-bedroom (7+1)

316 m², Prague 6, Břevnov, Oddělená

Rented

NOVOSTAVBA RODINNÉHO DOMU

ULICE ODDĚLENÁ, PRAHA 6





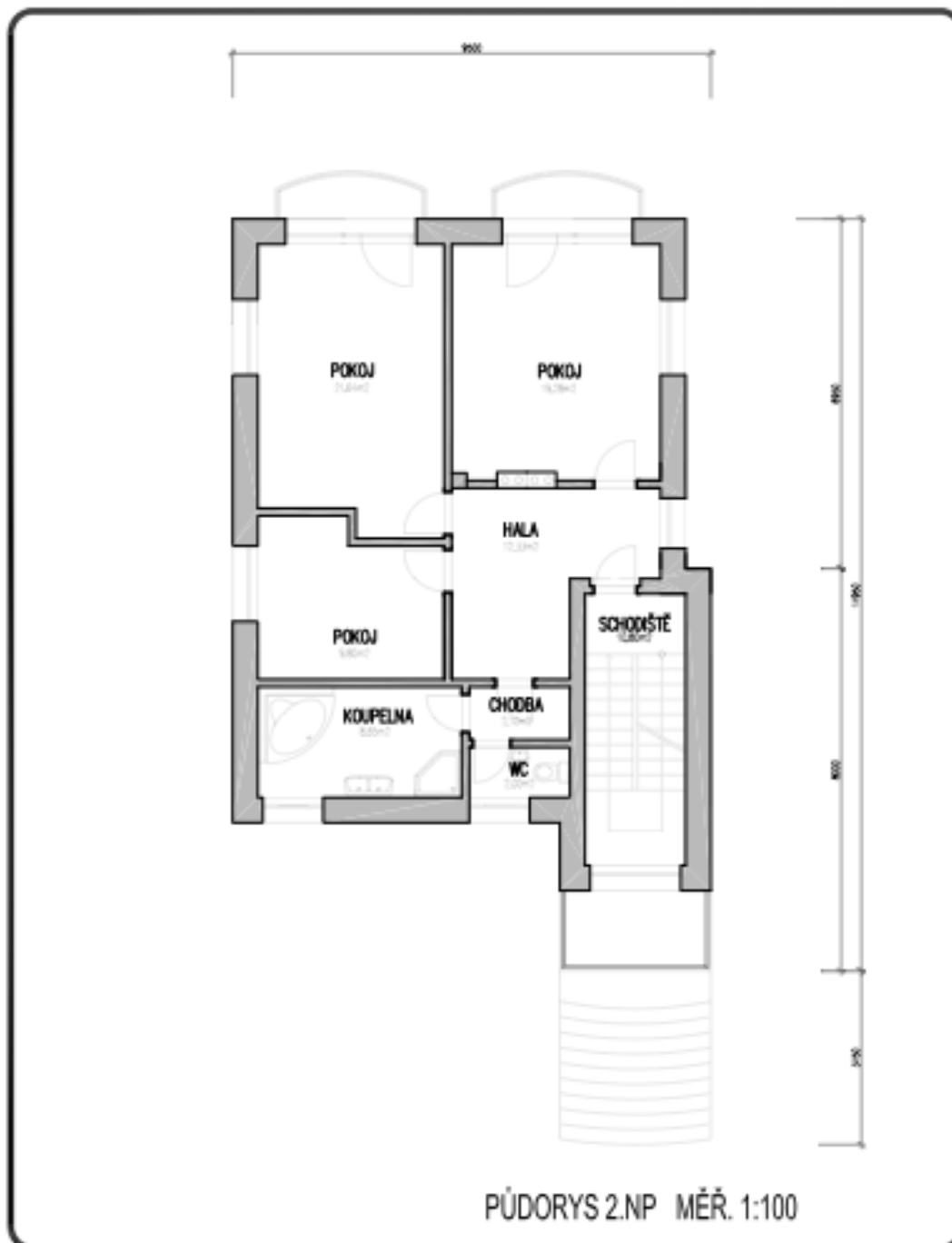
House Six-bedroom (7+1)

316 m², Prague 6, Břevnov, Oddělená

Rented

NOVOSTAVBA RODINNÉHO DOMU

ULICE ODDĚLENÁ, PRAHA 6





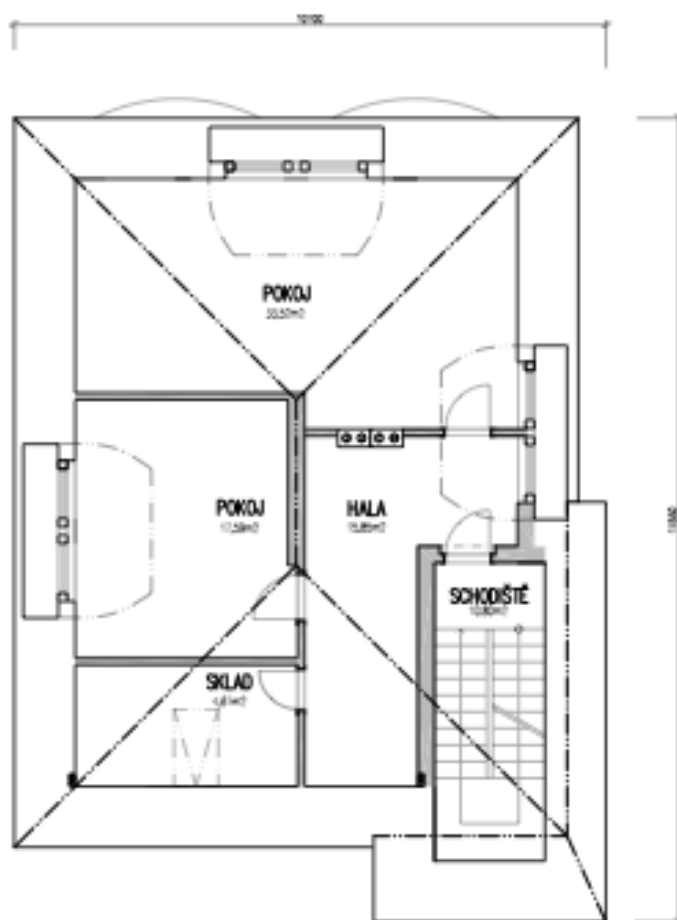
House Six-bedroom (7+1)

316 m², Prague 6, Břevnov, Oddělená

Rented

NOVOSTAVBA RODINNÉHO DOMU

ULICE ODDĚLENÁ, PRAHA 6



PŮDORYS PODKROVÍ MĚŘ. 1:100



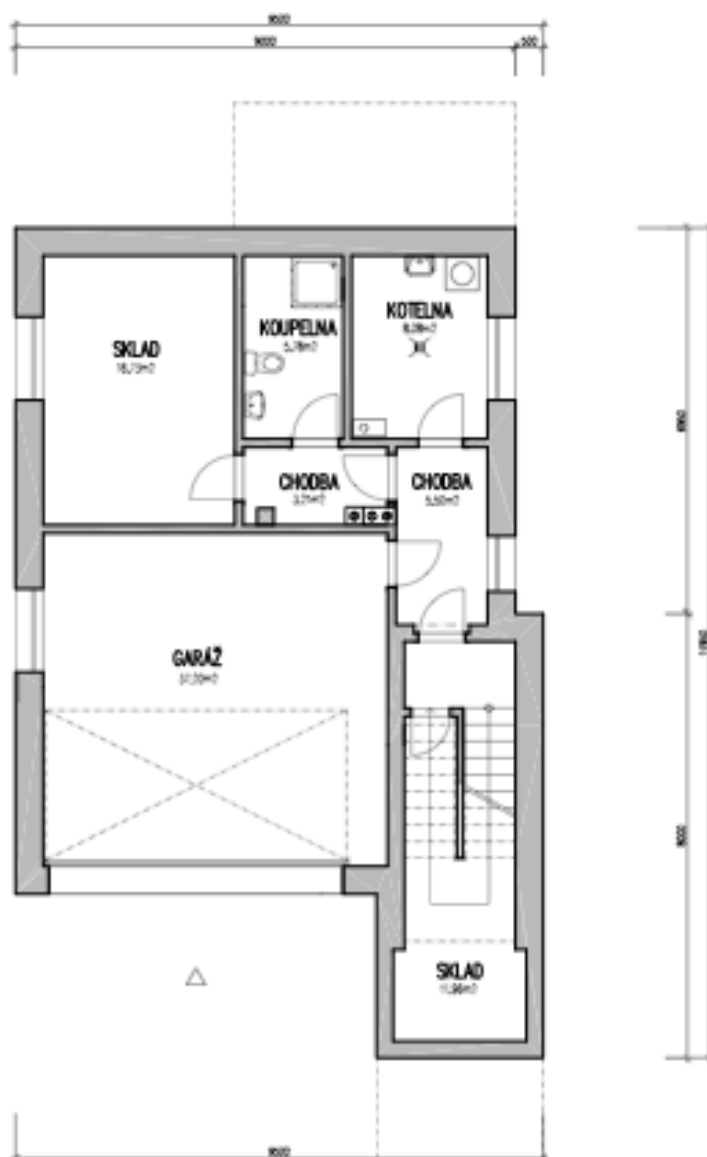
House Six-bedroom (7+1)

316 m², Prague 6, Břevnov, Oddělená

Rented

NOVOSTAVBA RODINNÉHO DOMU

ULICE ODDĚLENÁ, PRAHA 6



PŮDORYS SUTERÉNU MĚŘ. 1:100

