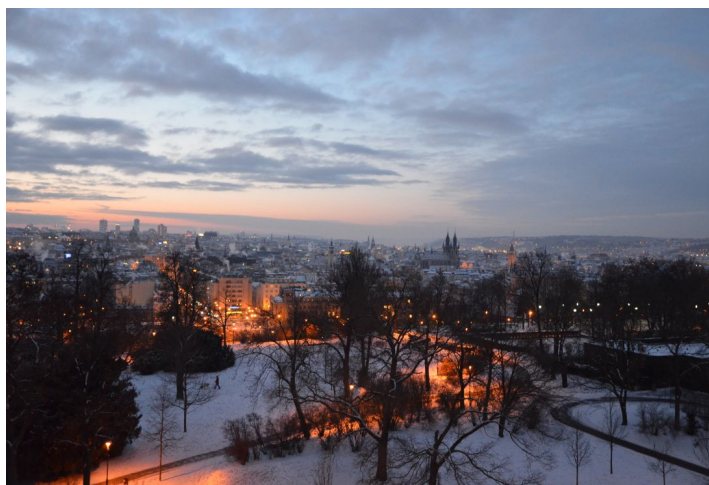




Apartment Four-bedroom (5+1)

Sold

180 m², Prague 7, Holešovice, Kostelní





Apartment Four-bedroom (5+1)

Sold180 m², Prague 7, Holešovice, Kostelní

Total area	205 m ²
Floor area*	180 m ²
Terrace	25 m ²
Parking	Garage 24,7 m ²
Garage	Yes
Cellar	Yes
PENB	G
Reference number	19622

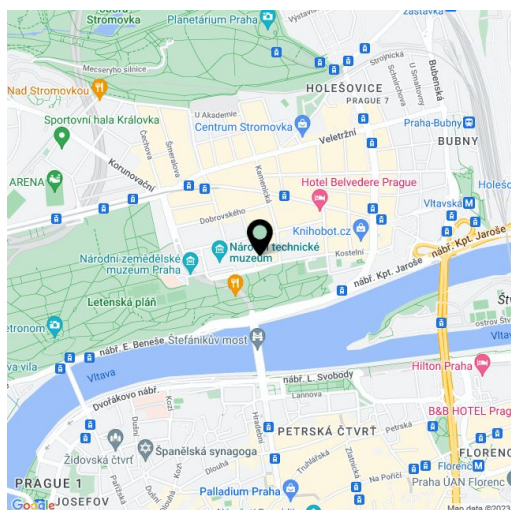
Modern duplex apartment after reconstruction, with a spacious terrace boasting unique panoramic views of the city, and a garage. Situated on the 5th and 6th floors of a traditional residential building with a new lift, in the front line on the edge of Letná park, 3 minutes walk from the tram stop.

The first level of the apartment consists of a spacious living room with **fireplace** and a spiral staircase leading to the first floor, a fully fitted kitchen, 2 bedrooms, bathroom, separate toilet, walk-in closet, pantry and 2 hallways. The second level offers 2 bedrooms with en-suite bathrooms, and a gallery with access to the terrace.

The apartment is equipped with hardwood floating floors, wooden windows, kitchen with **Siemens** appliances, and Villeroy & Boch bathroom fittings. **The purchase price includes a garage and a spacious cellar.**

Popular residential location within walking distance of the center and with full amenities, close to Letná Park. The surrounding area features several kindergartens and schools, the National Technical Museum, theaters, fitness center, tennis courts.

Interior 178.9 m², 24.6 m² terrace.



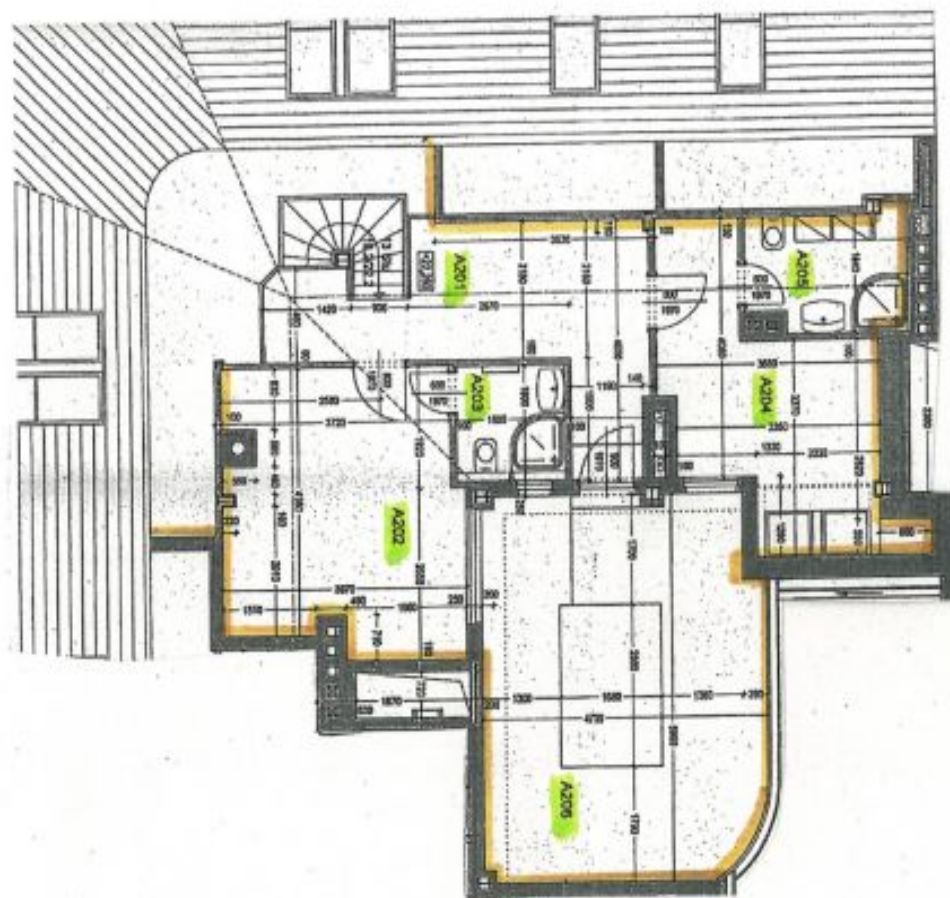
* Area of the unit according to the Civil Code. The area consists of the sum total area of the entire unit bounded by perimeter walls.



Apartment Four-bedroom (5+1)

180 m², Prague 7, Holešovice, Kostelní

Sold



6. PATRO

BYT A - GALERIE	
A201	galerie 13,66
A202	pokoj 14,69
A203	koupelna 3,36
A204	pokoj 13,80
A205	koupelna 3,80
A205	terasa 24,60
PLOCHA CELKEM 78,78	



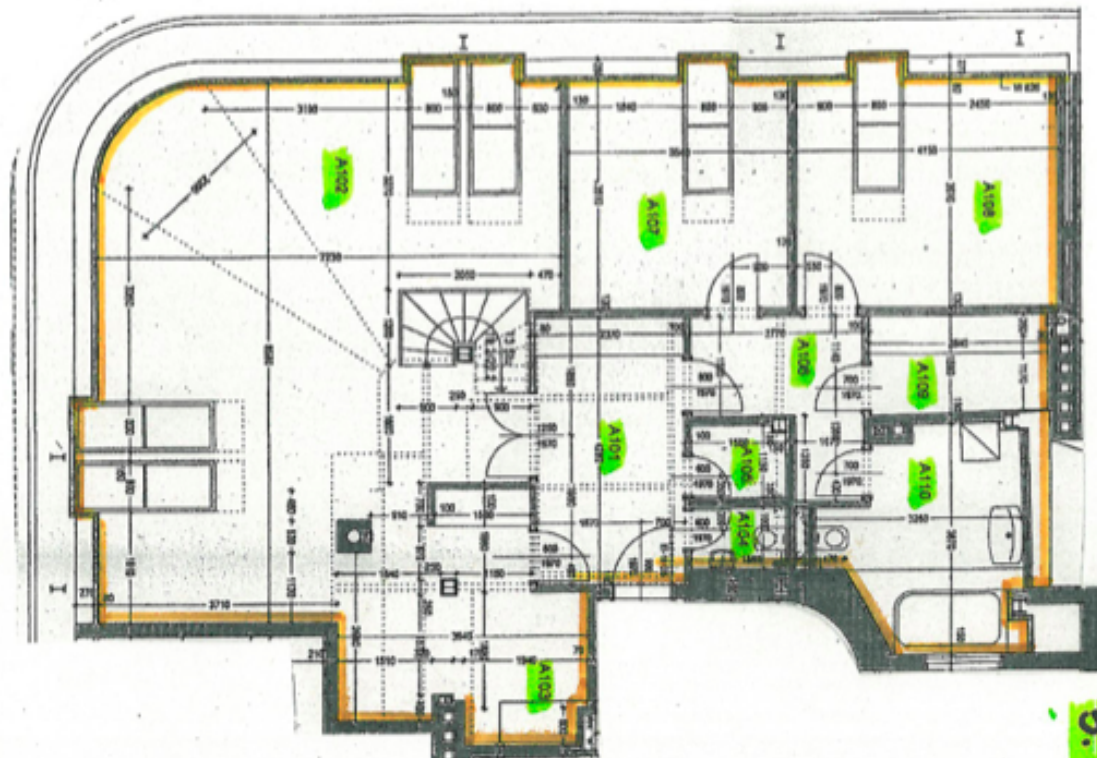
GARAZE



Apartment Four-bedroom (5+1)

180 m², Prague 7, Holešovice, Kostelní

Sold



5. PATRO

BYT A - PODKROVÍ	
A1101	phodskh - 18,13
A1102	obytov prostor 83,27
A1103	kuchyni 13,05
A1104	WC 1,70
A1105	spiz 1,78
A1106	chodba 8,83
A1107	podaj 13,05
A1108	podaj 15,25
A1109	balcon 4,43
A1110	komorka 8,14
PLOCHA CELKEM: 127,82	