



## Apartment Four-bedroom (5+1)

Sold

163 m<sup>2</sup>, Praha 6, Bubeneč, Eliášova





## Apartment Four-bedroom (5+1)

**Sold**163 m<sup>2</sup>, Praha 6, Bubeneč, Eliášova

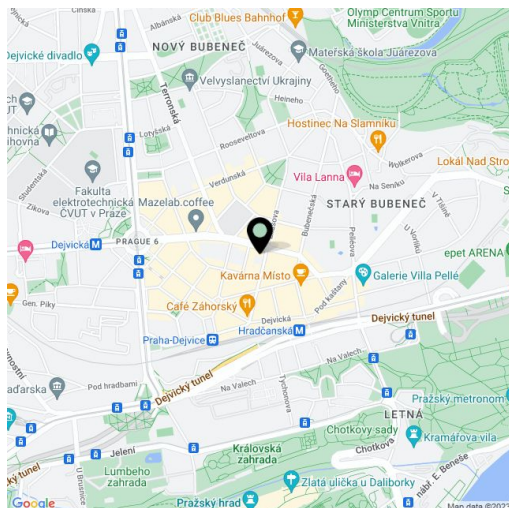
Total area	165 m <sup>2</sup>
Floor area*	163 m <sup>2</sup>
Balcony	2 m <sup>2</sup>
Parking	-
Cellar	Yes
Service price	included
PENB	G
Reference number	19624

Spacious air-conditioned apartment with 2 balconies on the 3rd floor of an apartment building with a lift, situated in the popular residential area of Prague 6 - Bubeneč, a few steps from the Hradčanská and Dejvická metro stations. The apartment was created by joining two separate units and can be easily split again.

The layout offers a living room, spacious dining room, separate kitchen, 2 bedrooms, 2 bathrooms, and separate toilet. **Air-conditioning** in the master bedroom, living room and dining room, parquet and **marble** floors, **aluminum windows**, original wooden doors and armored entrance doors, Junkers gas boiler. The purchase price includes a **large cellar**.

The house, which was built in 1940 went through a complete renovation in the 90s; new roof and part of the risers; within 2 years a new lift will be installed. Sought after address with good access to city center and all amenities in place, within walking distance of Prague Castle, and Letná and Stromovka parks.

Interior 163 m<sup>2</sup>, balcony 1 + 1 m<sup>2</sup>, 12 m<sup>2</sup> cellar.



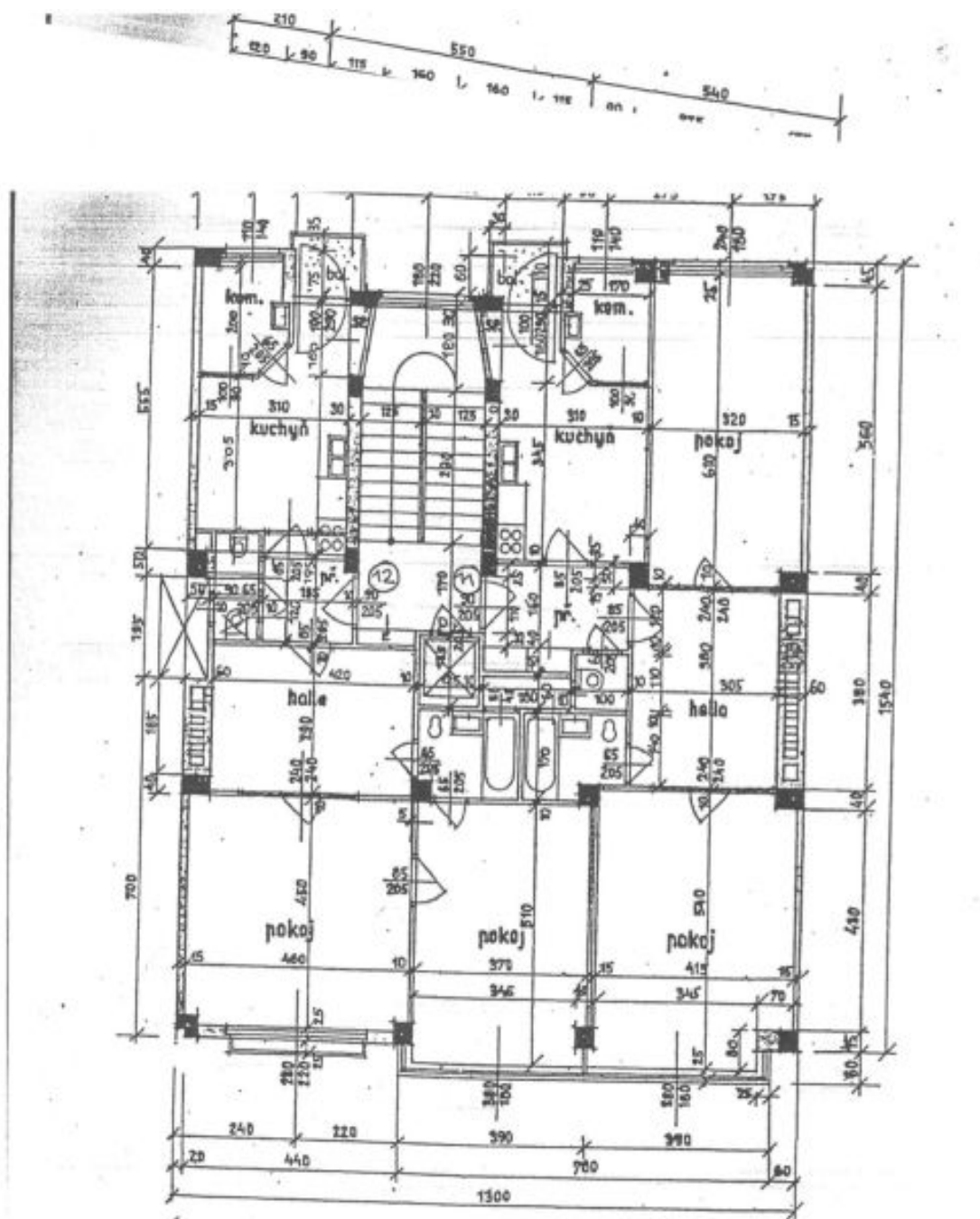
\* Area of the unit according to the Civil Code. The area consists of the sum total area of the entire unit bounded by perimeter walls.



# Apartment Four-bedroom (5+1)

163 m<sup>2</sup>, Praha 6, Bubeneč, Eliášova

Sold



**3. PATRO** BYT č. 11, 12

1D 19624