



Apartment Two-bedroom (3+kk)

Sold

90 m², Prague 2, Nové Město, Trojická





Apartment Two-bedroom (3+kk)

Sold90 m², Prague 2, Nové Město, Trojická

Total area	104 m ²
Floor area*	90 m ²
Terrace	14 m ²
Parking	-
Cellar	-
PENB	G
Reference number	19690

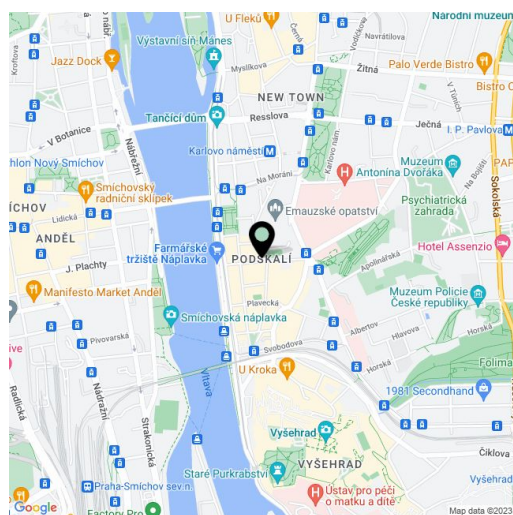
New split-level attic flat with a terrace and views of the Emauzy Monastery, on the 5th floor of a fully renovated apartment building with an elevator, restaurant and fitness center, situated in the center of Prague just a few steps from the Vltava riverbank and the metro station at Palackého náměstí Square.

The lower level of the apartment offers an entry hall, living room with kitchen, bedroom, bathroom with shower and toilet, and a storage room. The upper level consists of a bedroom with terrace, bathroom with bathtub and toilet, and a staircase hall.

Equipment includes quality **three-layer walnut flooring** with a smooth finish, ceramic tiles, **new casement windows**, wood interior doors, coffered replicas entry door, **Roca**, Hüppe, Laufen or Villeroy & Boch bathroom fixtures.

The project stands out for its romantic location a few dozen meters from Náplavka, within walking distance of Vyšehradské zahrady park and numerous cafes, wine bars and restaurants.

Interior 90 m², terrace 13.7 m².



* Area of the unit according to the Civil Code. The area consists of the sum total area of the entire unit bounded by perimeter walls.



Apartment Two-bedroom (3+kk)

Sold

90 m², Prague 2, Nové Město, Trojická



6NP | 94,9 m² | 3+KK

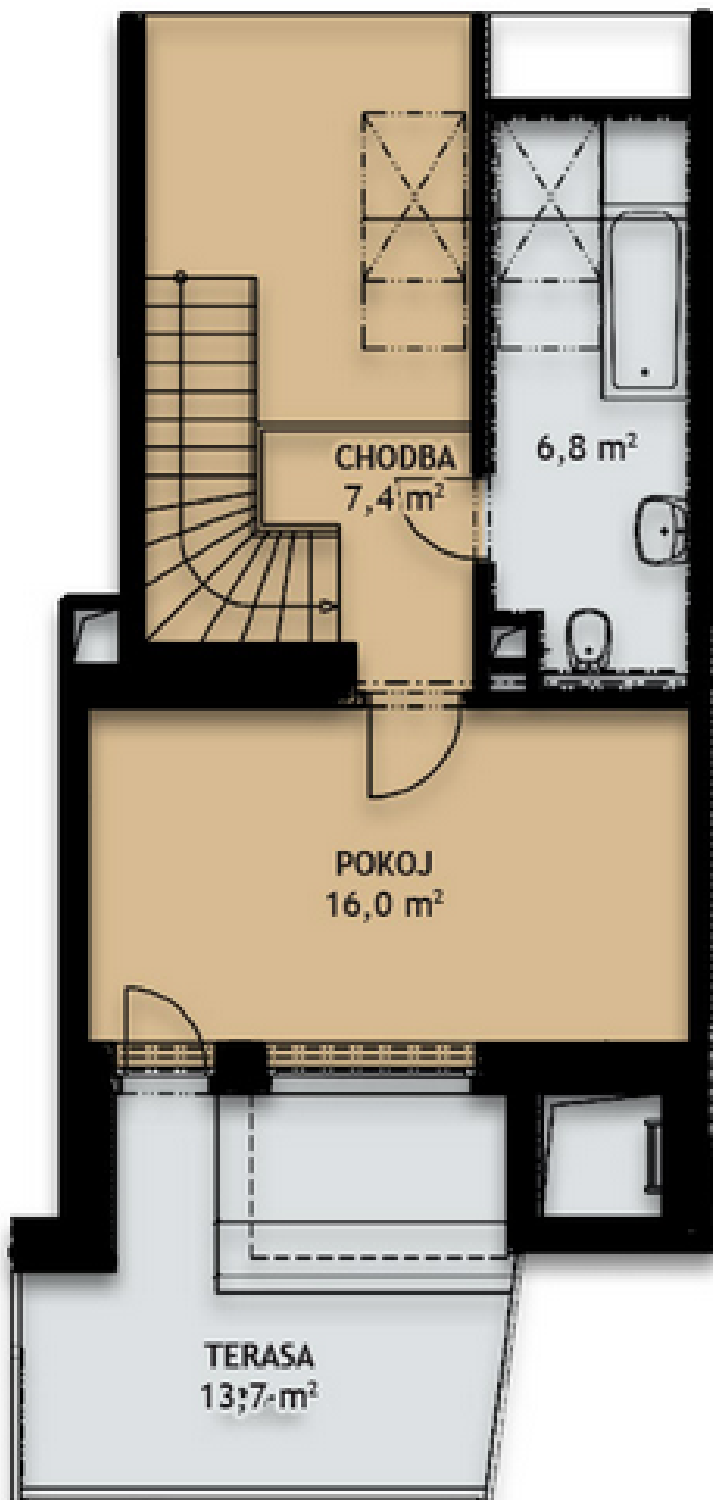




Apartment Two-bedroom (3+kk)

Sold

90 m², Prague 2, Nové Město, Trojická



7NP | 94,9 m² | 3+KK