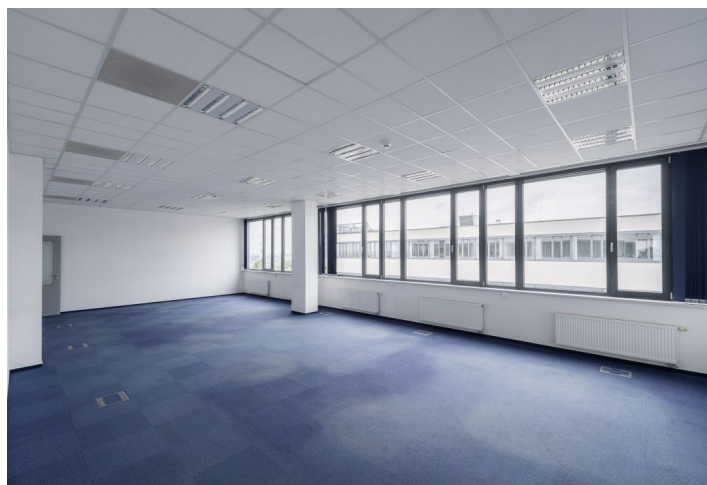
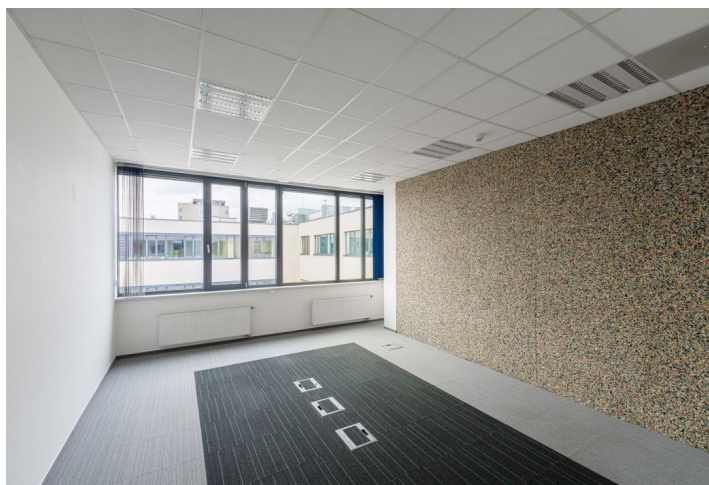
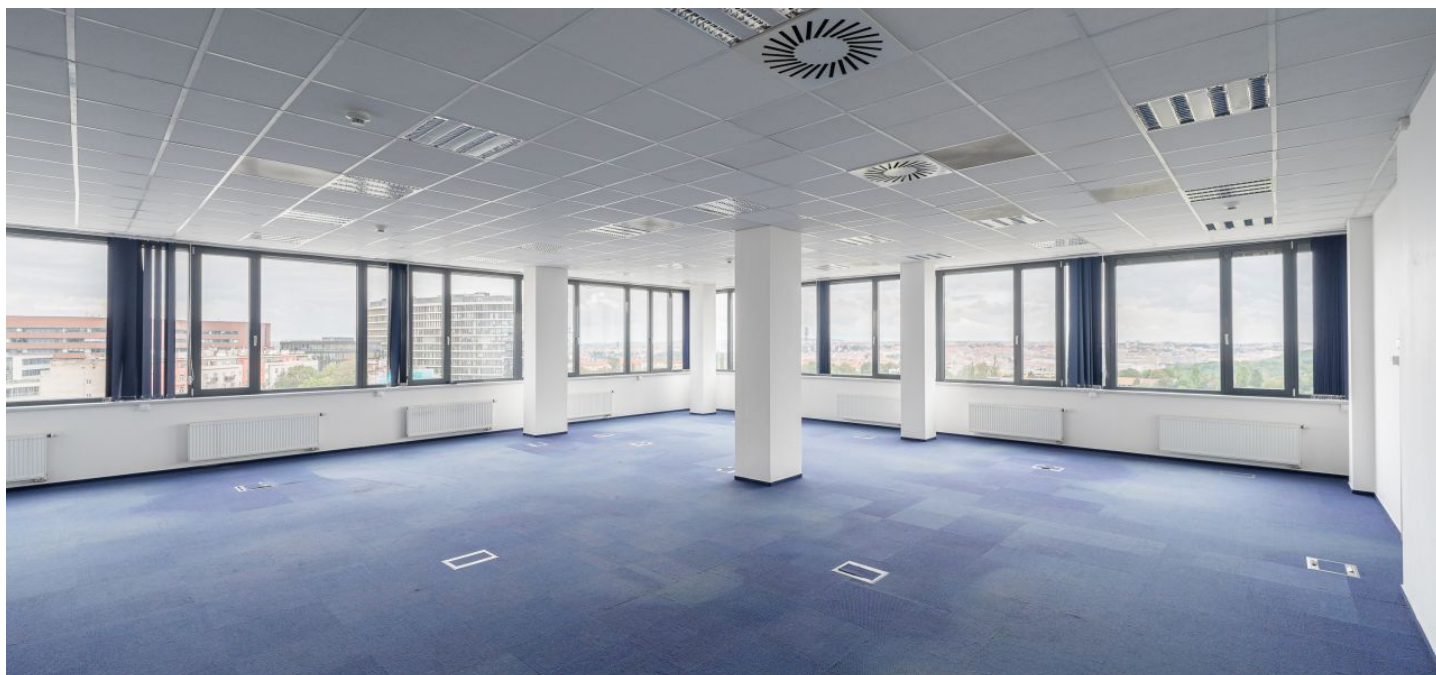




Office space

Prague 4, Michle, Budějovická

€ 12.50 / m² | CZK 314 / m²



**Office space**

Prague 4, Michle, Budějovická

€ 12.50 / m² | CZK 314 / m²

Service price	130 CZK monthly per m ²
Available area	115 m ²
Cellar	-
Parking	EUR 95 / ps / month
PENB	G
Reference number	19703

Complex of office buildings with a total of more than 23,000 m² of office space for rent. The building is located in the administrative and business area of Prague 4 and consists of two wings with a green atrium in between with an area of 1000 m², suitable for relaxation.

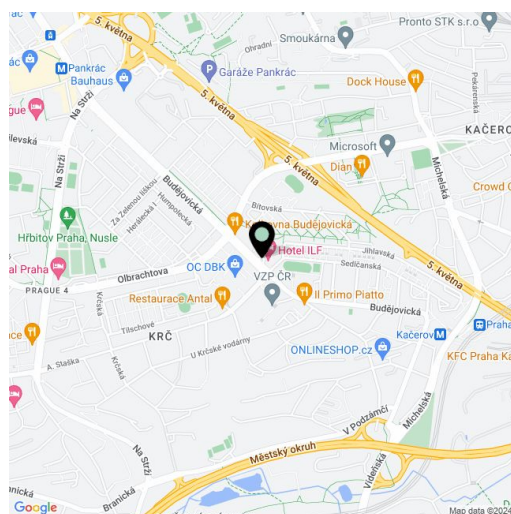
Location:

Outstanding accessibility by car and public transportation - within walking distance of metro station Pankrác (line C) a Budějovická (line C), right on exit of the North-South Highway. In close proximity is one of the newest shopping centers - Arcade Pankrac and other services such as restaurants, hotels, conference centers, banks, post office, school and sports.

Features and Services:

- Open plan without internal partitions (partitions can be divided according to particular tenant needs)
- Ventilation and air-conditioning to regulate temperature
- Raised floors with floor boxes (1 box per 10 m² of office space)
- 3 m ceiling clear height
- Suspended ceilings with lighting
- 24/7 security and reception service
- Magnetic card access system
- Preparation for the kitchen (water supply and waste)
- Openable windows
- Exterior window electric
- Blinds on the southwest façade of the building
- Possibility of placing tenant logos

Rental and service charges listed without VAT. Lessee pays no commission.





Office space

Prague 4, Michle, Budějovická

€ 12.50 / m² | CZK 314 / m²

