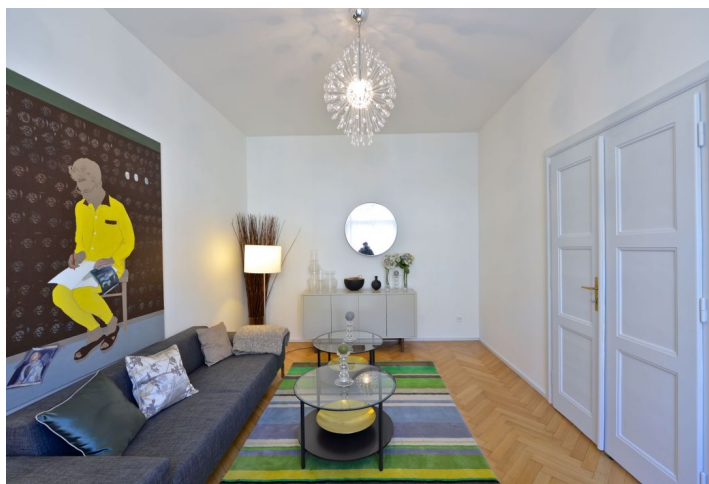




Apartment Two-bedroom (3+1)

Rented

106 m², Praha 6, Bubeneč, Národní obrany





Apartment Two-bedroom (3+1)

Rented

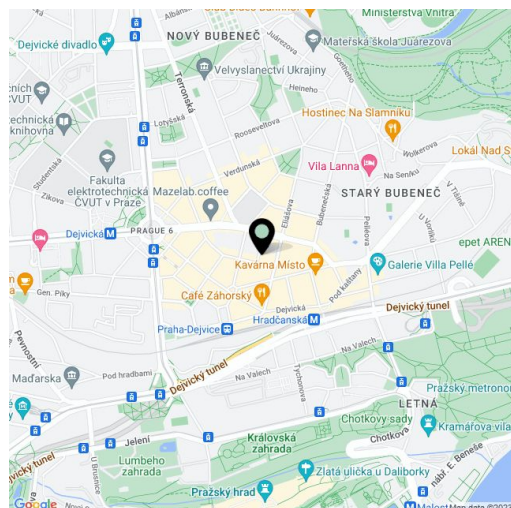
106 m², Praha 6, Bubeneč, Národní obrany

Total area	106 m ²
Parking	-
Cellar	Yes
Service price	Deposit for common building charges and water CZK 1,000/person/month. Gas and electricity are billed separately.
PENB	G
Reference number	1972
Available from	Immediately

Refurbished, unfurnished apartment on the 3rd floor of a fully reconstructed residential building with an elevator, located in the popular embassy area of Bubeneč with full amenities, moments from the Dejvická metro station, bus, and tram links. Within easy reach of the Stromovka and Letenské Sady parks and the Prague Castle, convenient to the airport and the ISP, Park Lane and Riverside School international schools.

The interior includes a fully fitted and equipped eat-in kitchen, a living room, and two bedrooms facing a quiet courtyard (the master bedroom has a partly separated study area). There is a bathroom with a bathtub and toilet, a shower bathroom, a guest toilet, and a large entry hall.

Preserved original details, high ceilings, large windows, renovated hardwood parquet floors, security entry door, gas boiler, built-in wardrobes, washer, dishwasher, cellar.



* Size of the unit according to the Housing Act.

The area consists of the sum total of the internal area of every room.