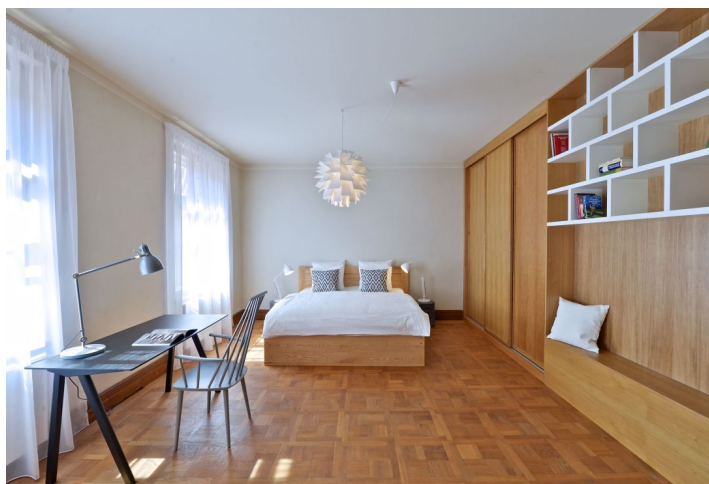




Apartment One-bedroom (2+kk)

Rented

64 m², Praha 1, Malá Strana, Lázeňská





Apartment One-bedroom (2+kk)

Rented

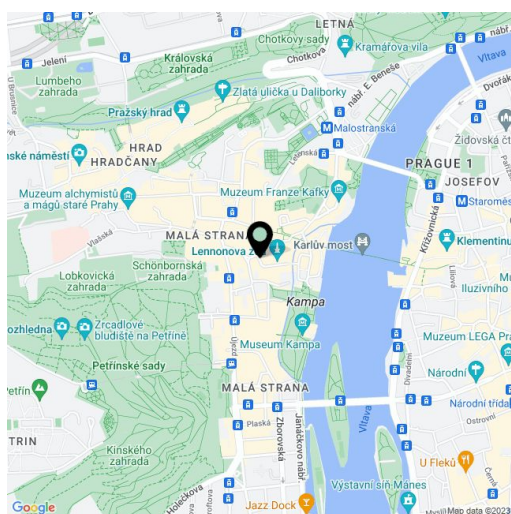
64 m², Praha 1, Malá Strana, Lázeňská

Total area	64 m ²
Parking	-
Cellar	-
PENB	G
Reference number	19840
Available from	Immediately

Wonderfully located fully refurbished and furnished 1-bedroom flat on the third floor of a reconstructed historic palace with a lift and camera system. Prestigious area just steps from the Charles Bridge and Kampa Island, a short walk up to the Prague Castle. Very quiet, safe and private despite the vibrant location, a minute walk to tram stops at Malostranské Square, one stop to Malostranská metro station.

The interior includes living room with a fully fitted open plan kitchen, one bedroom with large built-in wardrobes, shower bathroom, a separate toilet, and entry hall. The windows are oriented towards a quiet courtyard.

Large windows, solid wood parquet floors, tiles, security entry door, curtains, washing machine, dishwasher, dishes and kitchenware, TV, video entry phone, alarm. Common building charges CZK 3000 per month. Electricity will be transferred to the tenant's name.



* Area of the unit according to the Civil Code. The area consists of the sum total area of the entire unit bounded by perimeter walls.