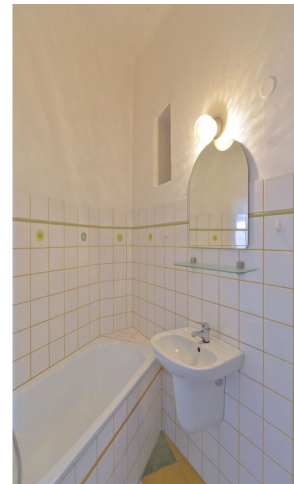




## Apartment One-bedroom (2+1)

Sold

64 m<sup>2</sup>, Praha 2, Vyšehrad, Lumírova





## Apartment One-bedroom (2+1)

**Sold**64 m<sup>2</sup>, Praha 2, Vyšehrad, Lumírova

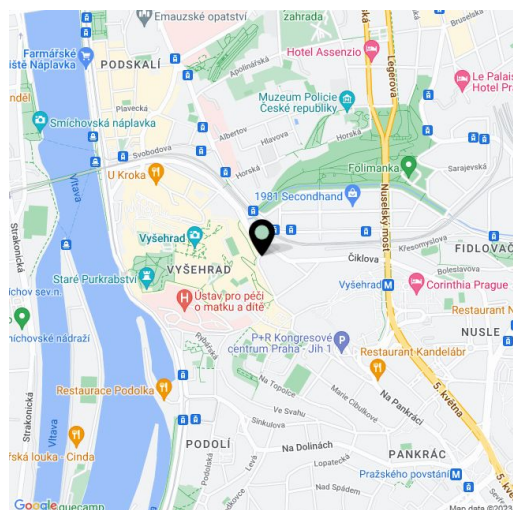
Total area	66 m <sup>2</sup>
Floor area*	64 m <sup>2</sup>
Balcony	2 m <sup>2</sup>
Parking	-
Cellar	-
Service price	2 950 CZK monthly
PENB	G
Reference number	19843

**Bright, quiet apartment with a balcony on the 4th floor of a traditional building without a lift, situated in a very pleasant and prestigious location directly below Vyšehrad, just a few meters from a tram stop and within walking distance of Metro Line C.**

The layout offers a living room, kitchen with dining room, bedroom, bathroom with bathtub, chamber and hallway. Features include original parquet flooring and original casement windows.

**Exclusive address in the first line under the Vyšehrad gardens in the vicinity of Folimanka park.** Nearby are kindergartens, schools, General University Hospital, tennis courts and fitness center, close to Podolí outdoor swimming pool and indoor swimming pool.

Interior 64 m<sup>2</sup>, balcony 2 m<sup>2</sup>.



\* Area of the unit according to the Civil Code. The area consists of the sum total area of the entire unit bounded by perimeter walls.