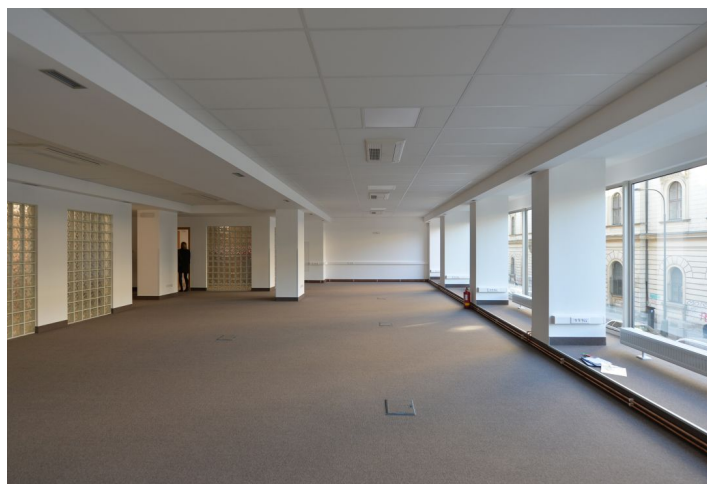
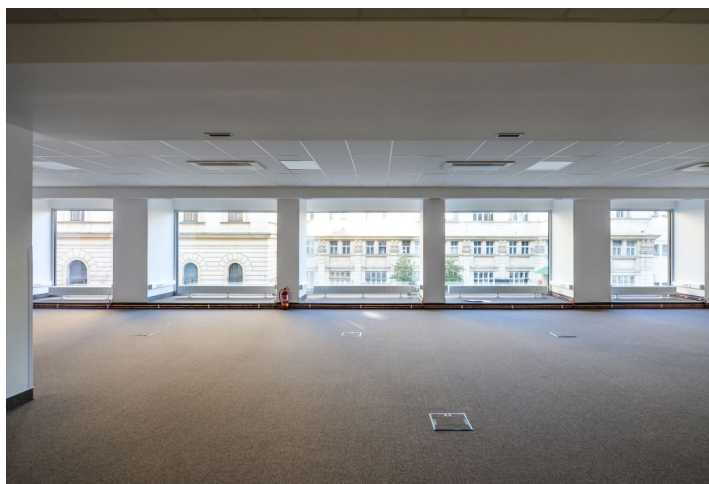




Office space

Praha 1, Nové Město, Hybernská

€ 12.23 / m² | CZK 310 / m²





Office space

Praha 1, Nové Město, Hybernská

€ 12.23 / m² | CZK 310 / m²

Service price	130 CZK monthly per m ²
Available area	239 m ²
Cellar	-
Parking	Yes
PENB	G
Reference number	19872

Office space for lease in the mezzanine of an administrative building located on the border of Old and New Town, with excellent accessibility by car and public transportation.

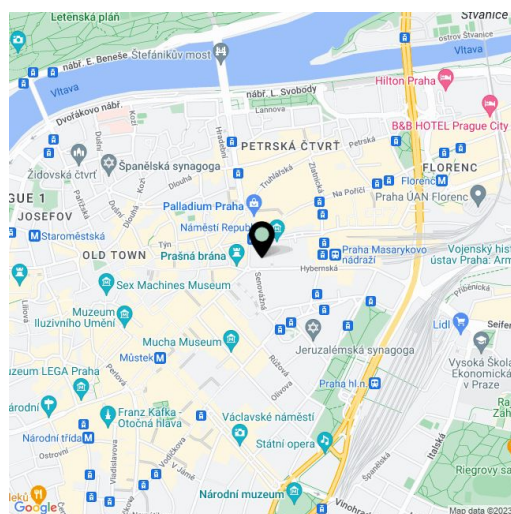
Location:

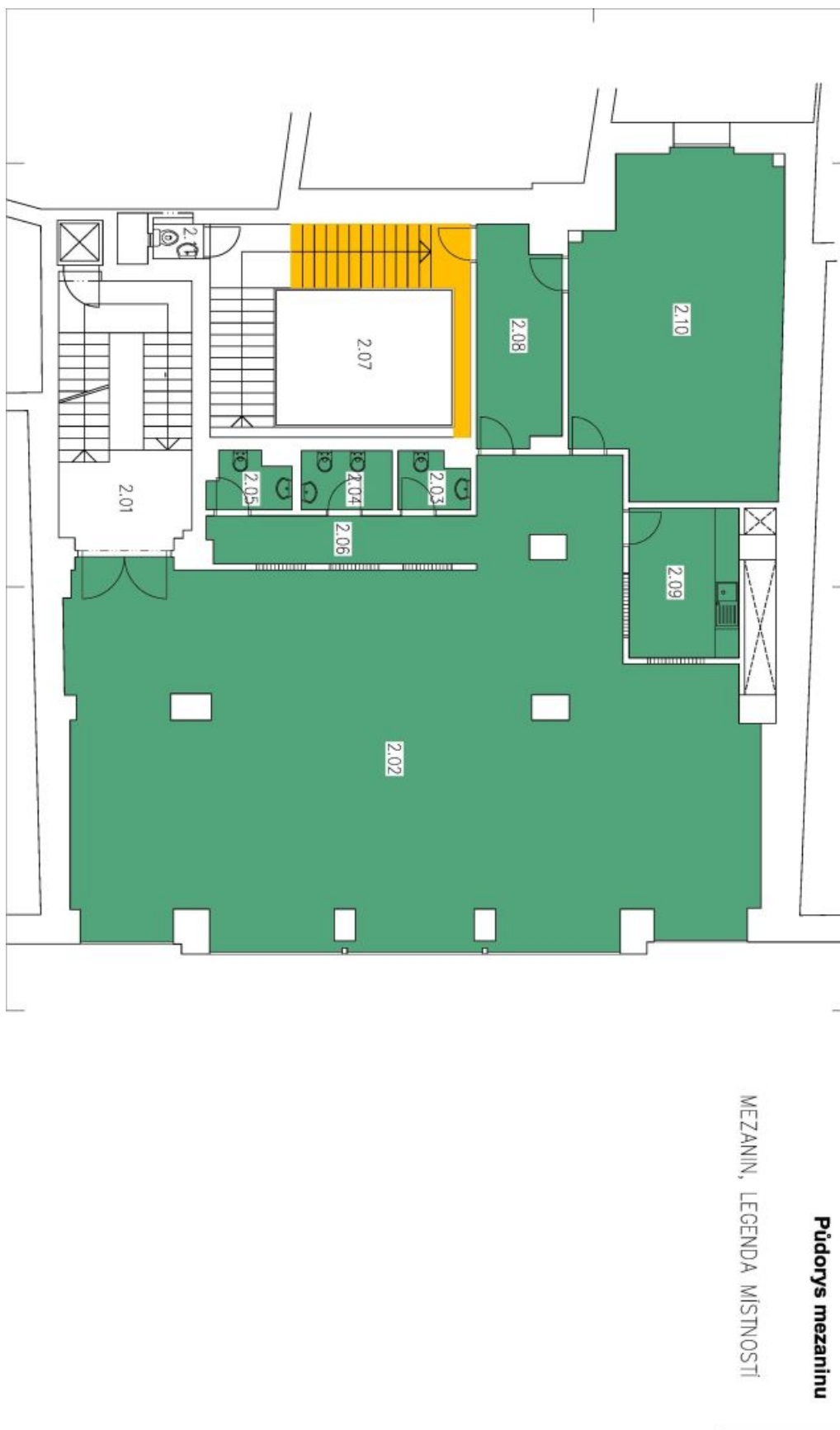
Situated in a strategic location in New Town, the building is in close vicinity to Hlavní Nadraží - the Main Railway Station, the Masaryk railway station, and the Florenc bus station. Outstanding accessibility by car and public transportation - close to Prague's main highway that leads to the D1 highway, within walking distance of the Hlavní Nádraží (line C), Náměstí Republiky (line B), and Florenc (lines B, C) metro stations; there is a tram stop close to the building.

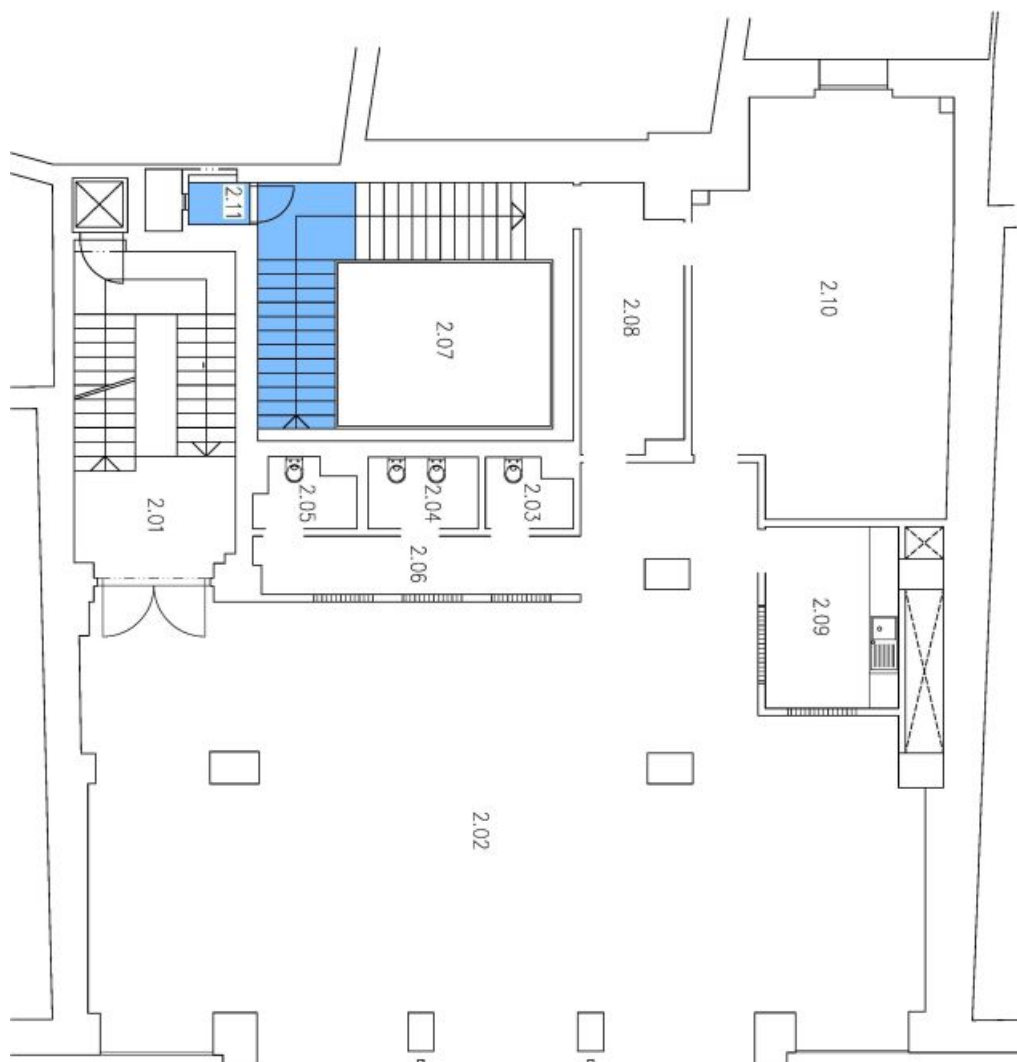
Features and services:

The space is bright, air-conditioned, and with all wiring available (optical fiber for high-speed Internet access) and floor boxes. The open space consists of a separate meeting room, a furnished kitchenette, and 3 toilets. Building amenities include a CCTV system in the common areas, a home videophone access system, and an elevator.

Rental and service charges listed without VAT. Lessee pays no commission.







MEZANIN, LEGENDA MÍSTNOSTÍ

Půdorys mezaninu