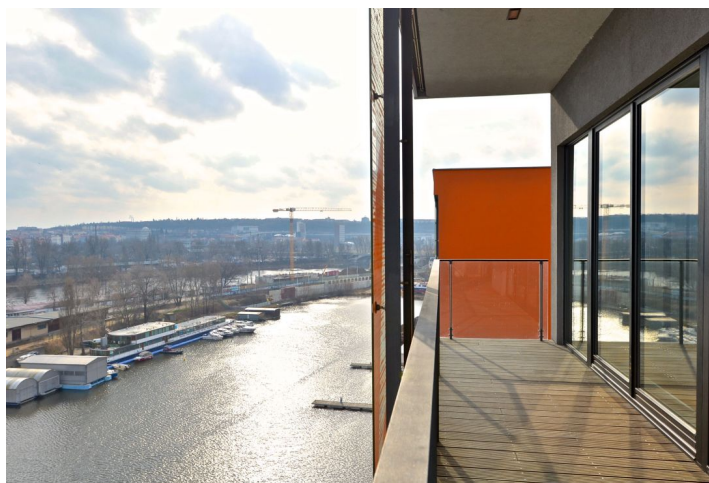
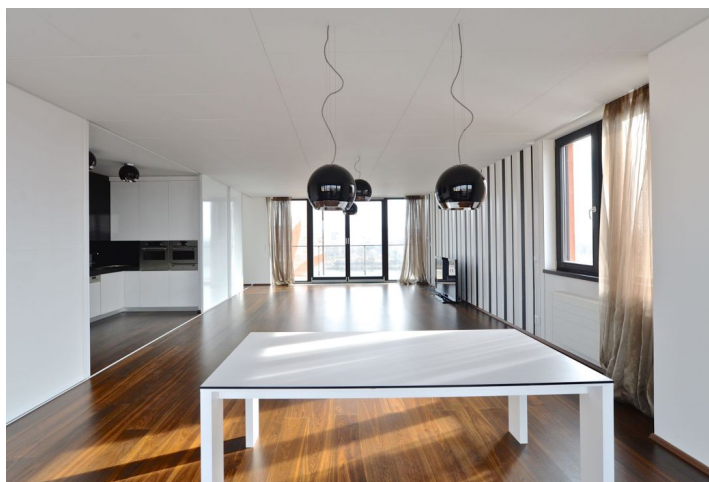




Apartment Three-bedroom (4+kk)

Ask for price

159 m², Praha 7, Holešovice, V Přístavu





Apartment Three-bedroom (4+kk)

Ask for price

159 m², Praha 7, Holešovice, V Přístavu

Total area	196 m ²
Floor area*	159 m ²
Terrace	37 m ²
Parking	2 garage parking spaces
Garage	Yes
Cellar	Yes
PENB	C
Reference number	19930

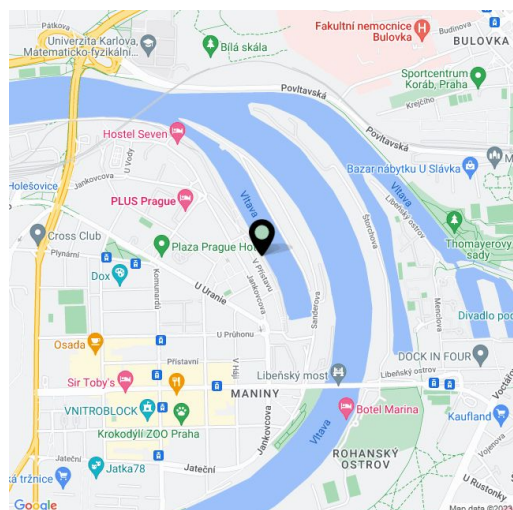
Modern apartment in an elegant timeless design with terrace, sauna and a beautiful view of the city located on the 10th floor of a residential project with 24-hour reception and parking, situated on the banks of the Vltava River in a dynamically developing part of Prague 7 - Holešovice.

The flat consists of an open-plan living room with kitchen, dining area, work/study area and access to both terraces, master bedroom with en-suite dressing room and bathroom, 2 other bedrooms, a bathroom, 2 storage rooms, dressing room and a central hall.

Features include **wooden floors** and **large format windows**, **acoustic suspended ceilings**, fully equipped kitchen with Whirlpool appliances. The purchase price is inclusive of **2 garage parking spaces** and an **air-conditioned cellar**.

The house is situated in a location with full public amenities, 5 minutes from Nádraží Holešovice metro station. Nursery and primary schools, Austrian grammar school, fitness center, cafes, restaurants and DOX Centre of Contemporary Art within walking distance.

Interior 159 m², 37 m² terrace, 7.7 m² cellar.



* Area of the unit according to the Civil Code. The area consists of the sum total area of the entire unit bounded by perimeter walls.



Apartment Three-bedroom (4+kk)

159 m², Praha 7, Holešovice, V Přístavu

Ask for price

