



# Office building

Praha 1, Nové Město, Jungmannova

Rented





## Office building

Praha 1, Nové Město, Jungmannova

**Rented**

Service price	44 CZK monthly
Total building area	5 542 m <sup>2</sup>
Tenant consumption	—
Parking	-
Parking service charges	—
Parking ratio	—
Certification	—
PENB	G
Reference number	19960

Historical building, an exquisite example of the Czech Rondo-Cubist style, offers office premises for lease in the heart of the city center. The building boasts an unusually bold architectural structure of its facade and is situated on the corner of Národní and Jungmannova streets, with a passage inside the building linking those two streets. Attractive location in the financial and commercial center, with excellent access to public transportation, directly at the Můstek metro station (line B, A).

### Features and Services:

- 2 receptions
- 24-hour security service
- Security camera system
- Electronic card access system
- Electronic fire alarm system
- Highly experienced facility management

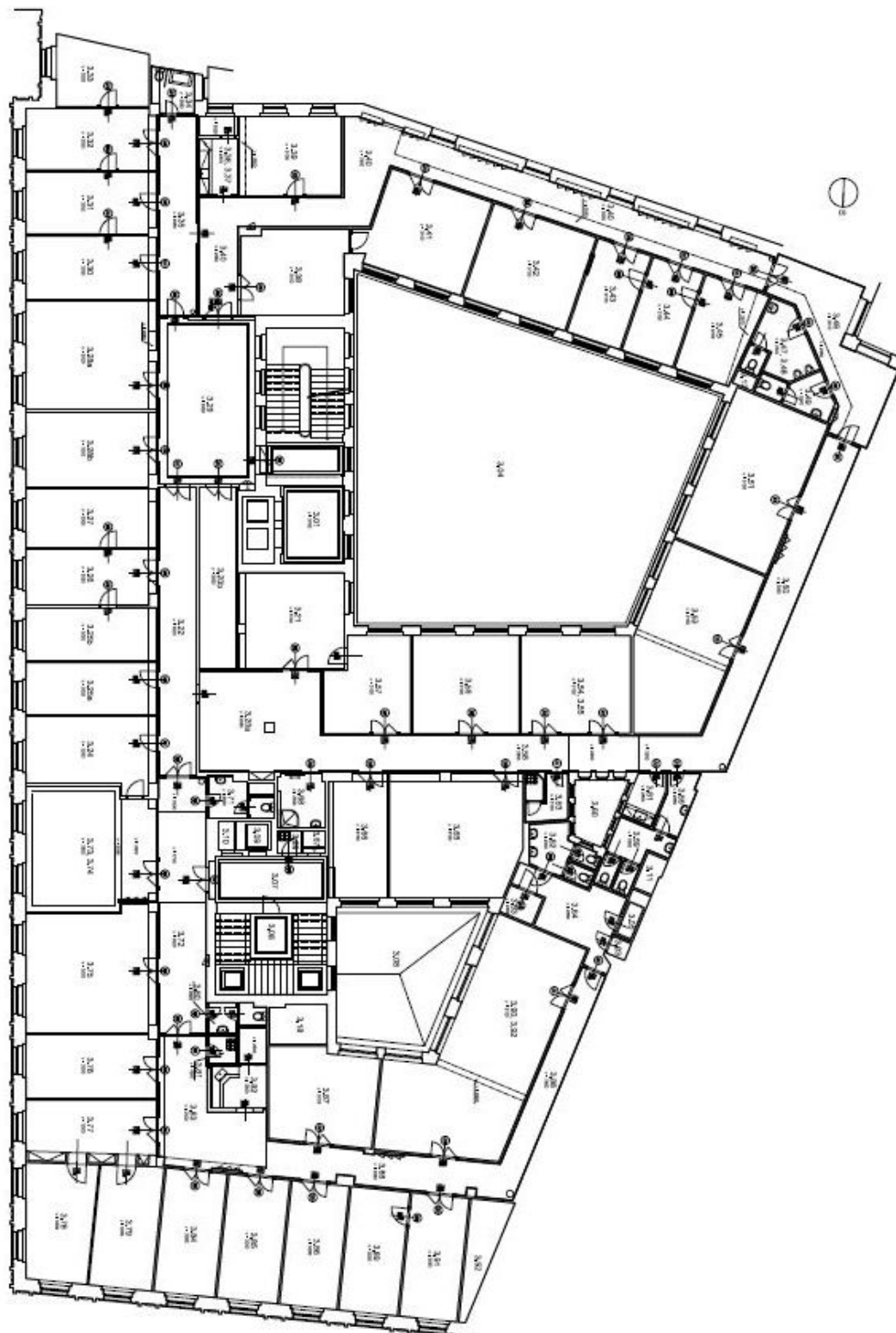
Lessee pays no commission.



# Office building

Praha 1, Nové Město, Jungmannova

Rented

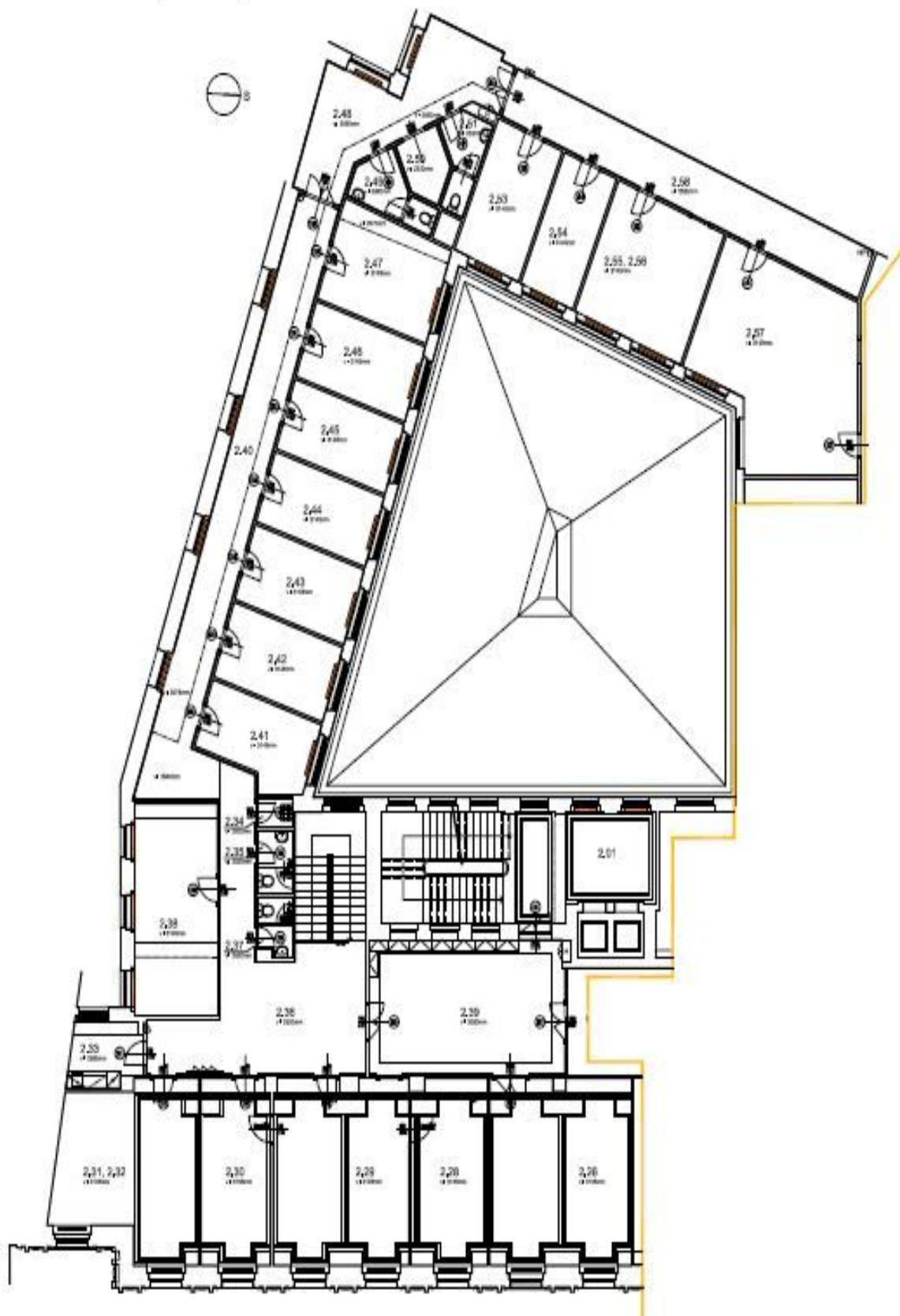


PUDORVY 5.NP (3.PATRO) M 1:100





PŮDORYS 4.NP (2.PATRO) M 1:100





# Office building

Praha 1, Nové Město, Jungmannova

Rented

