



## Apartment Two-bedroom (3+kk)

Rented

92 m<sup>2</sup>, Praha 5, Smíchov, Na Hřebenkách





## Apartment Two-bedroom (3+kk)

Rented

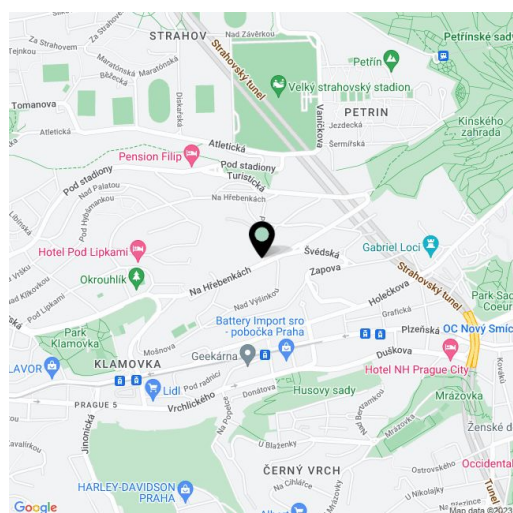
92 m<sup>2</sup>, Praha 5, Smíchov, Na Hřebenkách

Total area	92 m <sup>2</sup>
Parking	Parking available.
Garage	Yes
Cellar	Yes
PENB	G
Reference number	19966
Available from	Immediately

Benefiting from a shared garden, shared outdoor Jacuzzi and sauna, this fully refurbished unfurnished 2-bedroom 2-bathroom flat with direct access to the terrace and garden, is in a completely renovated villa. Located in a quiet prestigious residential neighborhood surrounded by greenery, in close vicinity of the Klamovka Park, and with good connection to the city center - ten minutes to the Anděl commercial center and metro station. Convenient to the French School and Strahov sports center, tennis courts are minutes from the house.

The interior includes a fully fitted kitchen open to the living room with terrace and garden access, master bedroom with a full bathroom, second bedroom, shower bathroom with toilet, and an open entry hall. The tenants can enjoy the shared garden with a garden house incl. a sauna, a fully fitted kitchen and barbecue, plus a roof terrace with Jacuzzi.

Wooden floors, tiles, security entry door, Miele appliances, dishwasher, microwave oven, alarm, video entry phone, camera system, automatic irrigation, spacious cellar. Garage available at CZK 2000/month or free parking on the plot with automatic gate. Common building charges, water and sauna CZK 4000 per month. Charges for using the garden house with sauna and terrace with Jacuzzi CZK 2500 per month. Gas and electricity are billed separately (transfer to the tenant). Unfurnished. Available from July 2015.



\* Area of the unit according to the Civil Code. The area consists of the sum total area of the entire unit bounded by perimeter walls.

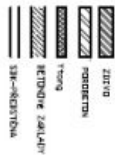
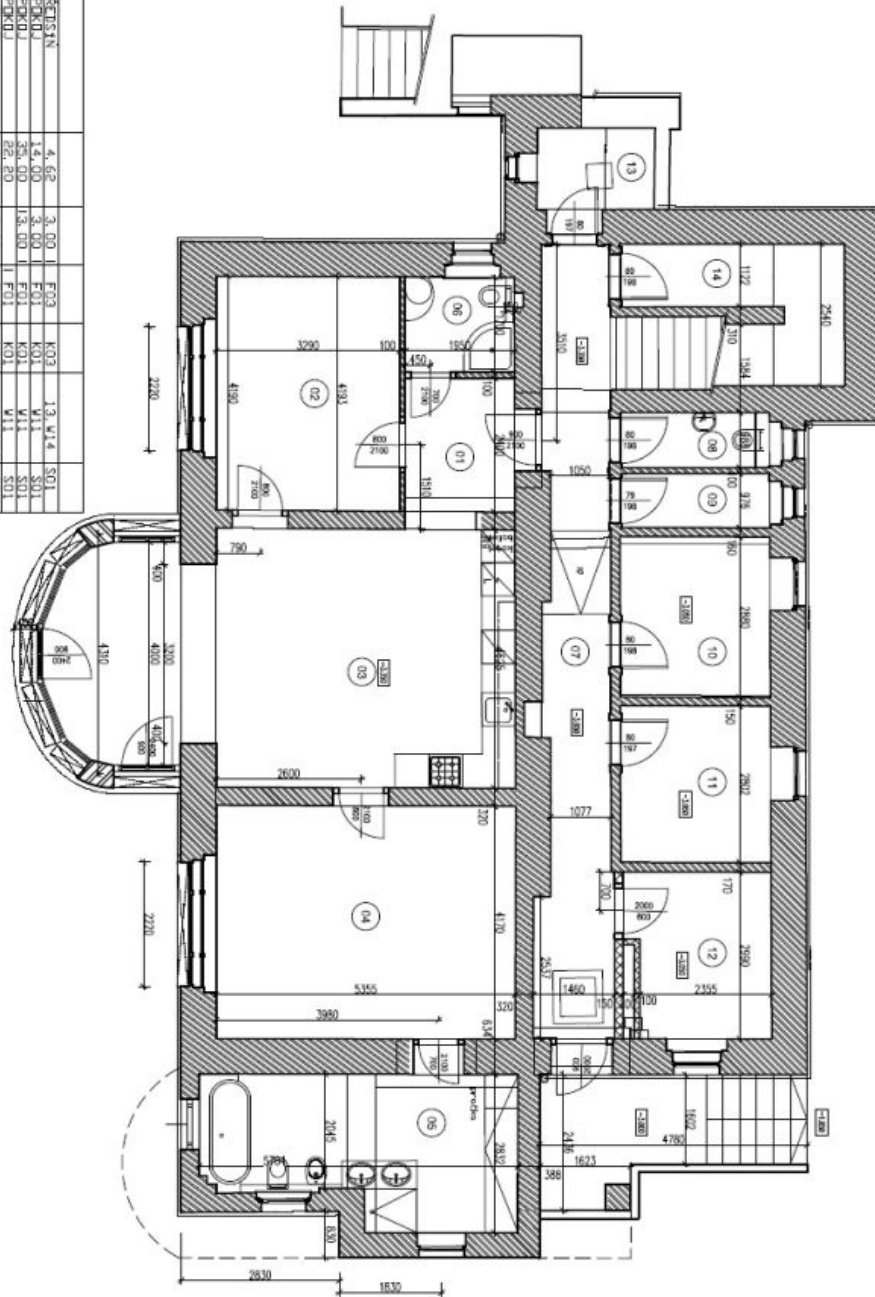


# Apartment Two-bedroom (3+kk)

Rented

92 m<sup>2</sup>, Praha 5, Smíchov, Na Hřebenkách

01	PŘÍSTAV	4,62	3,00	F03	K03	1,3	W14	S01
02	POKJ	14,00	3,00	F01	K01	W11	S01	
03	POKJ	29,00	3,00	F01	K01	W11	S01	
04	POKJ	29,00	3,00	F01	K01	W11	S01	
05	KUCHYNKA	6,00	3,00	F01	K01	W11	S01	
06	KUCHYNKA	3,30	3,00	F03	K03	W13	W14	S01
07	CHODBA	17,50	3,00	F04	F04	W11	S01	
08	WC	2,60	3,00	F03	K03	W13	W14	S01
09	SKLEP	2,60	3,00	F04	F04	W11	S01	
10	SKLEP	7,70	3,00	F04	F04	W11	S01	
11	SKLEP	7,70	3,00	F04	F04	W11	S01	
12	SKLEP	3,00	3,00	F04	F04	W11	S01	
13	SKLEP	3,00	3,00	F04	F04	W11	S01	
14	SKLEP	3,00	3,00	F04	F04	W11	S01	
CELKEM		59,50						



1NP	
01	
1/1	1/1
1/1	1/1