



## House Four-bedroom (5+1)

234 m<sup>2</sup>, Prague 6, Nebušice, V Oblouku

**Sold**





## House Four-bedroom (5+1)

**Sold**234 m<sup>2</sup>, Prague 6, Nebušice, V Oblouku

Plot	343 m <sup>2</sup>
Foot print	131 m <sup>2</sup>
Garden	212 m <sup>2</sup>
Parking	Garage with remote control.
Garage	Yes
Cellar	Yes
PENB	C
Reference number	20004

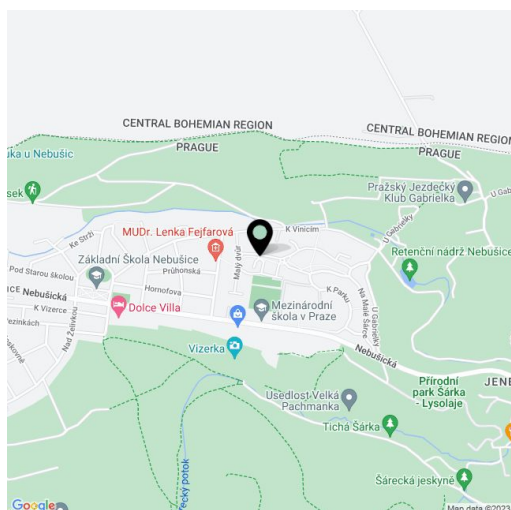
**Four-bedroom two-bathroom townhouse with a full basement and garden, set in the pleasant Malá Šárka subdivision of 140 houses built around the International School of Prague (ISP). Convenient to the city center and the Prague international airport.**

This is a "B" model house. The ground floor features a living / dining room with terrace and garden access, a fully equipped separate kitchen, guest toilet, and entry hall. The upper floor includes a master bedroom with an ensuite bathroom with bathtub, three more bedrooms, a shower bathroom, and a guest toilet. The basement consists of a large open space with storage and laundry area.

Other features include **parquet floors** and tiles, carpets, gas boiler, and alarm. The house has a garage. Each house in the community is connected to a 24-hour security service on the premises and is serviced by private road maintenance. Very pleasant setting, ideal for families.

Attractive residential location in Prague 6 surrounded by a forest, close to all amenities and within easy reach of the city center. There is a bus stop near the house.

Interior 234 m<sup>2</sup>, built-up area 131 m<sup>2</sup>, garden 212 m<sup>2</sup>, plot 343 m<sup>2</sup>.

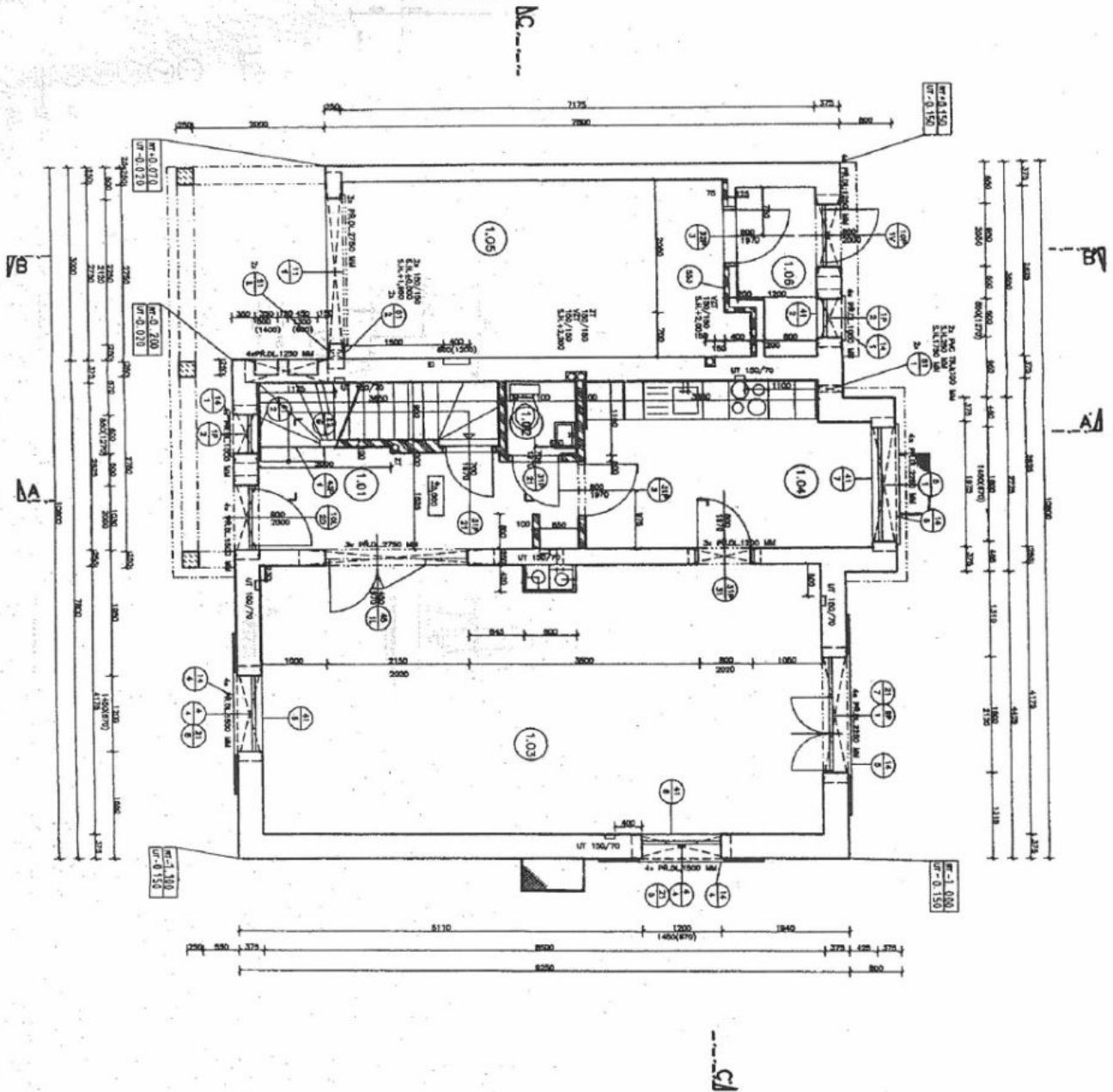




# House Four-bedroom (5+1)

234 m<sup>2</sup>, Prague 6, Nebušice, V Oblouku

Sold



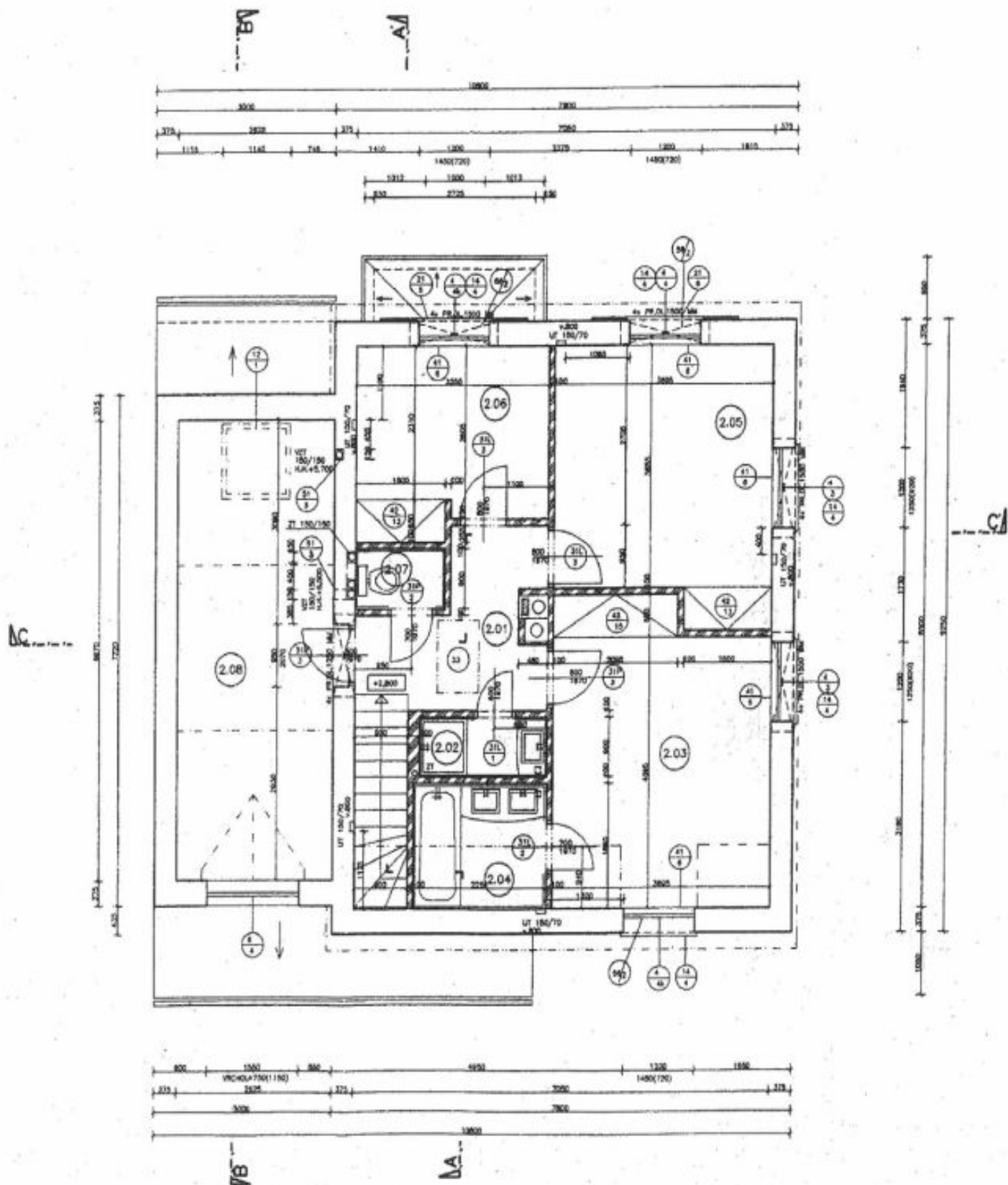




# House Four-bedroom (5+1)

234 m<sup>2</sup>, Prague 6, Nebušice, V Oblouku

Sold

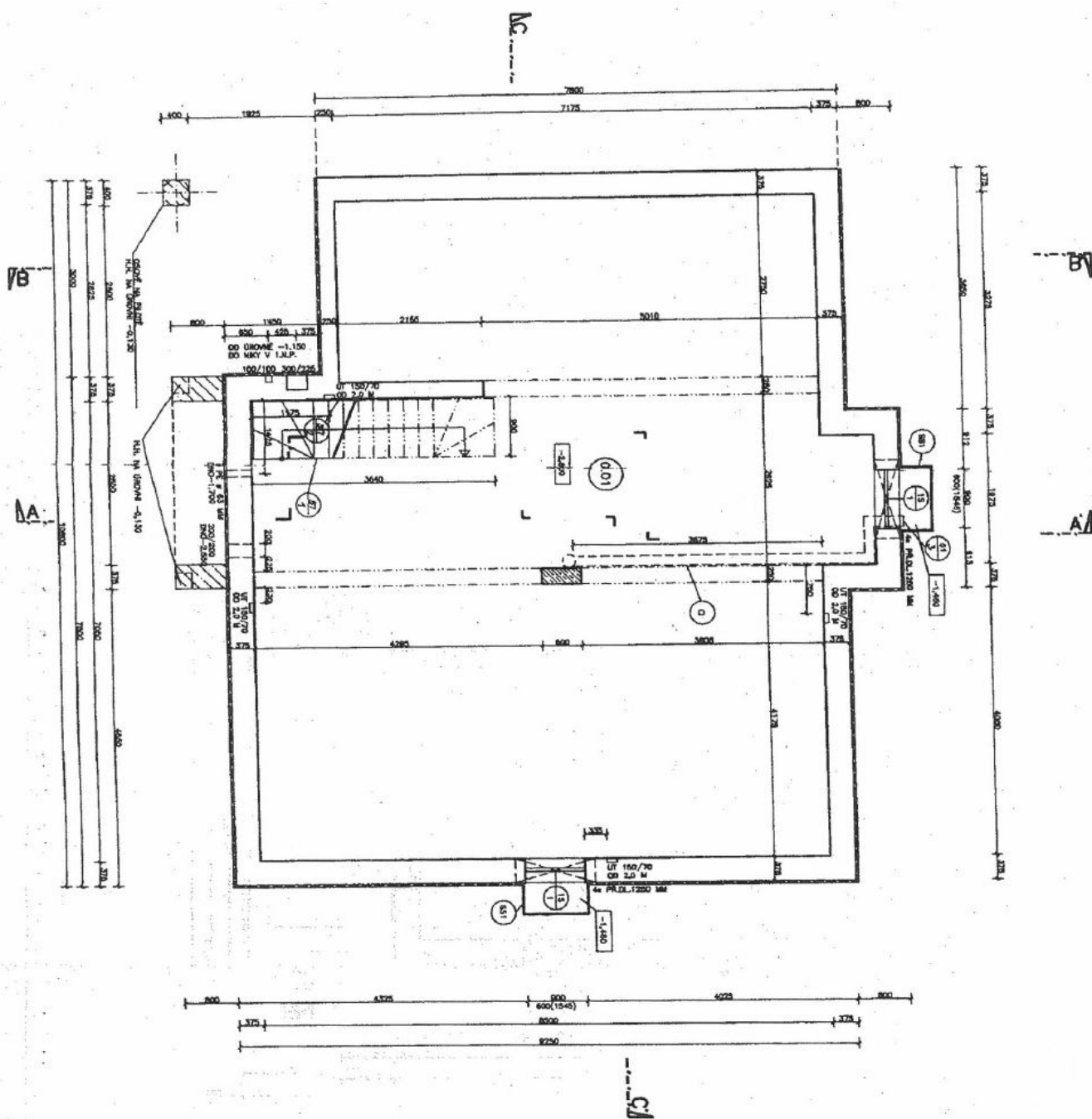




# House Four-bedroom (5+1)

234 m<sup>2</sup>, Prague 6, Nebušice, V Oblouku

Sold





# House Four-bedroom (5+1)

234 m<sup>2</sup>, Prague 6, Nebušice, V Oblouku

Sold

