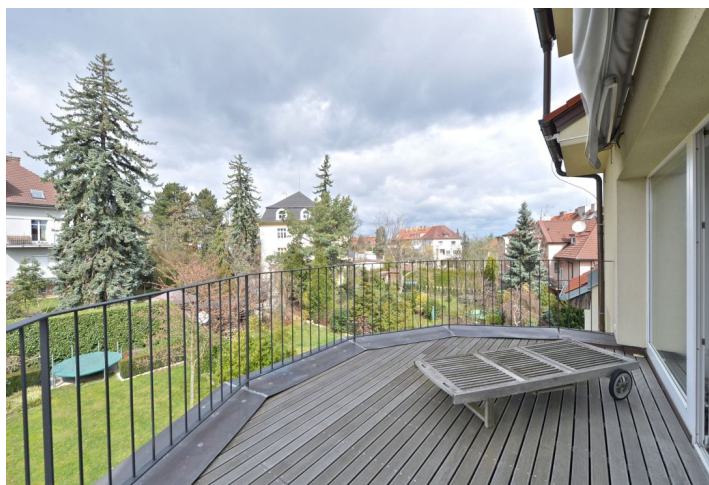




House Eleven-bedroom (12+1)

Ask for price

376 m², Prague 6, Dejvice, Fetrovská





House Eleven-bedroom (12+1)

[Ask for price](#)376 m², Prague 6, Dejvice, Fetrovská

| | |
|------------------|--------------------------|
| Usable area | 376 m ² |
| Plot | 419 m ² |
| Foot print | 212 m ² |
| Garden | 207 m ² |
| Floor area | 370 m ² |
| Terrace | 6 m ² |
| Parking | Garage for up to 4 cars. |
| Garage | Yes |
| Cellar | Yes |
| PENB | D |
| Reference number | 20013 |

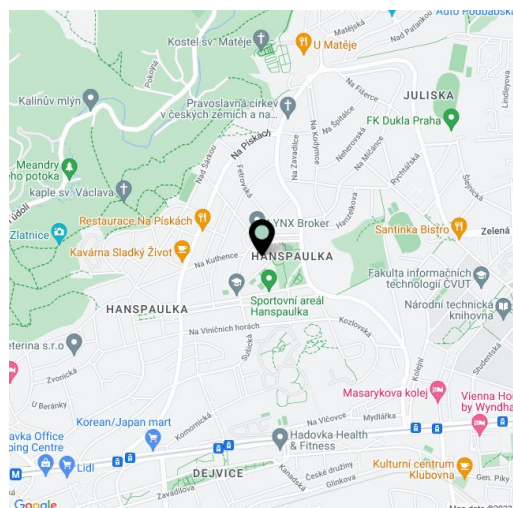
Unique, high quality furnished terraced house with 4 flats, situated in one of the most sought after locations in the popular Prague area of Hanspaulka. The villa is exceptional for its peaceful location in the vicinity of the Hanspaulka Chateau and for the views of Prague Castle and the far surroundings. The house is complete with a garden designed by landscape architect Jakub Finger.

The building can be used as a family house or as a villa featuring several apartments. The ground floor features a **40 m² studio**, while the 1st and 2nd floors have **two 2-bedroom apartments of 95 m²** (one with access to the garden). The last two floors are occupied by a **generous 4-bedroom penthouse of 140 m² and a terrace**. The house has a **garage for 3-4 cars**.

The interior of the penthouse was designed by **Atelier SAD architectural studio** and includes eg. **doors with internal hinges**, staircase with bent wooden railings, and Erco brand lighting. The bathrooms in the house have Hoesch, Hansgrohe, Duravit and Dornbracht bathroom fixtures; the kitchen is equipped with **Miele** and Bosch appliances.

One of Prague's most prestigious locations in the immediate vicinity of a park - also close to the vast Dolní Šárka nature park. Within walking distance there are two kindergartens and two elementary schools, a children's playground, sports center, tennis hall and courts. Bus stop with direct connection to the Bořislavka and Hradčanská metro stations just a five-minute walk from the house.

Interior 370 m², built-up area 212 m², garden 207 m², total of 419 m² plot.

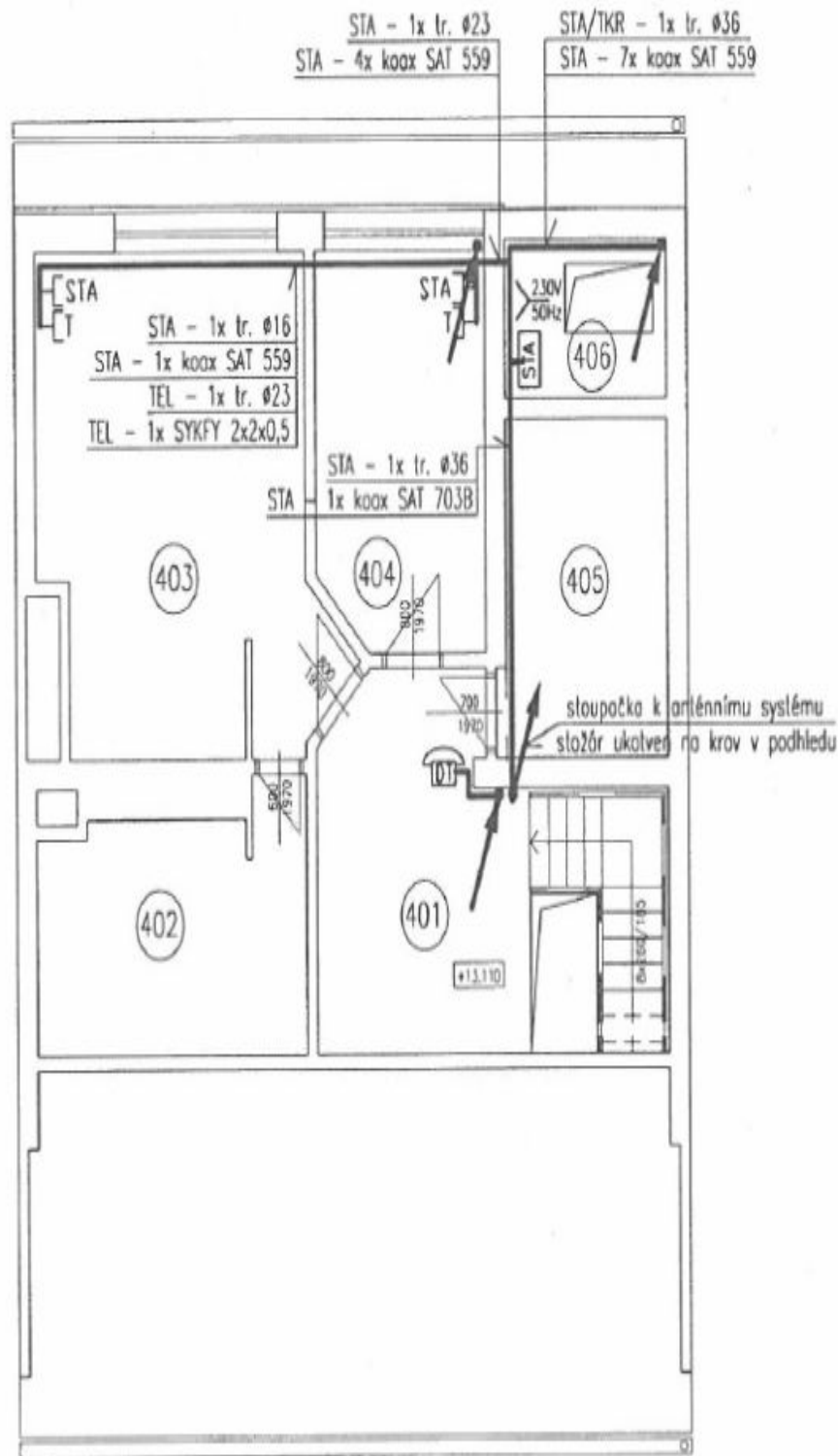




House Eleven-bedroom (12+1)

376 m², Prague 6, Dejvice, Fetrovská

Ask for price

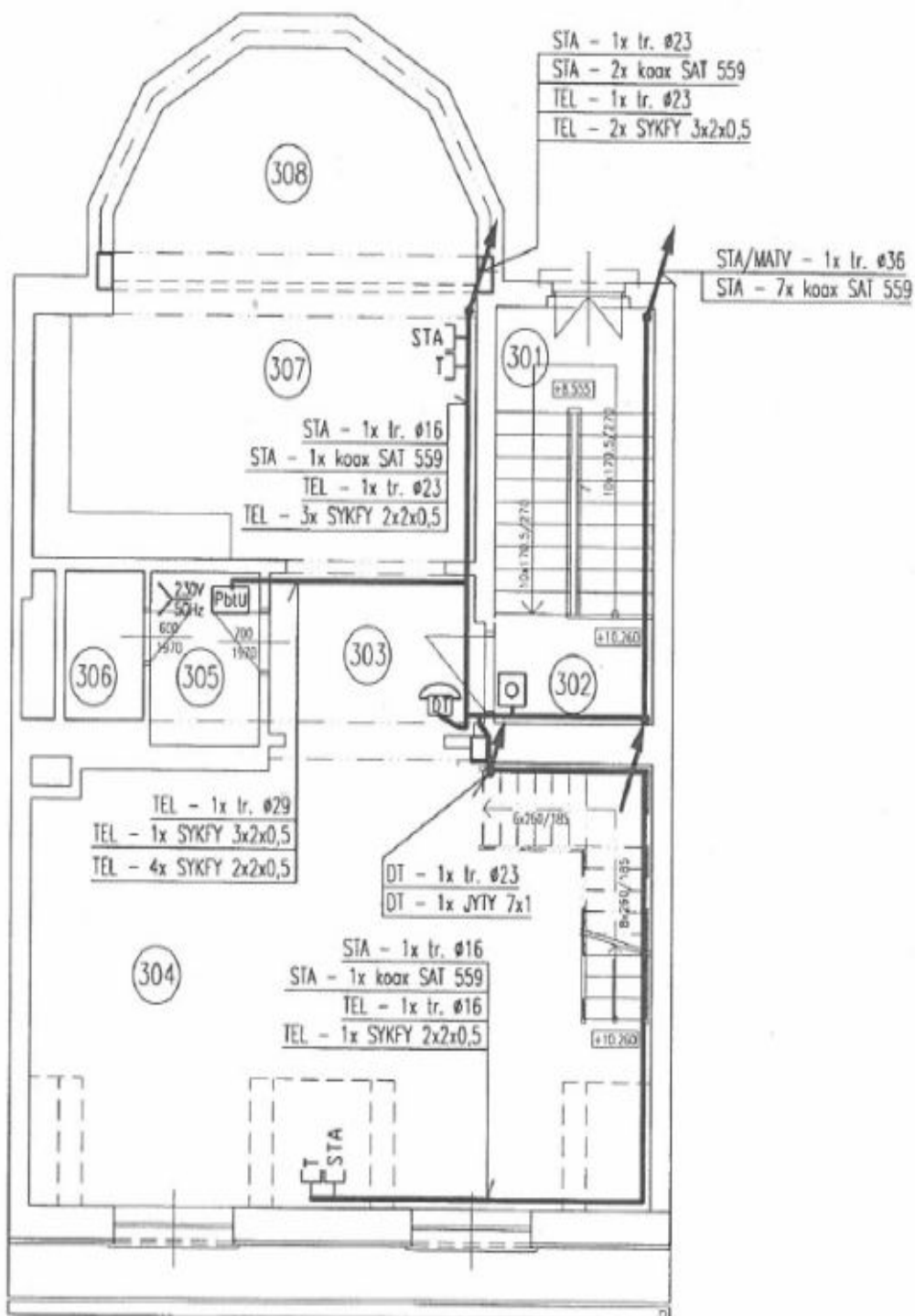




House Eleven-bedroom (12+1)

Ask for price

376 m², Prague 6, Dejvice, Fetrovská

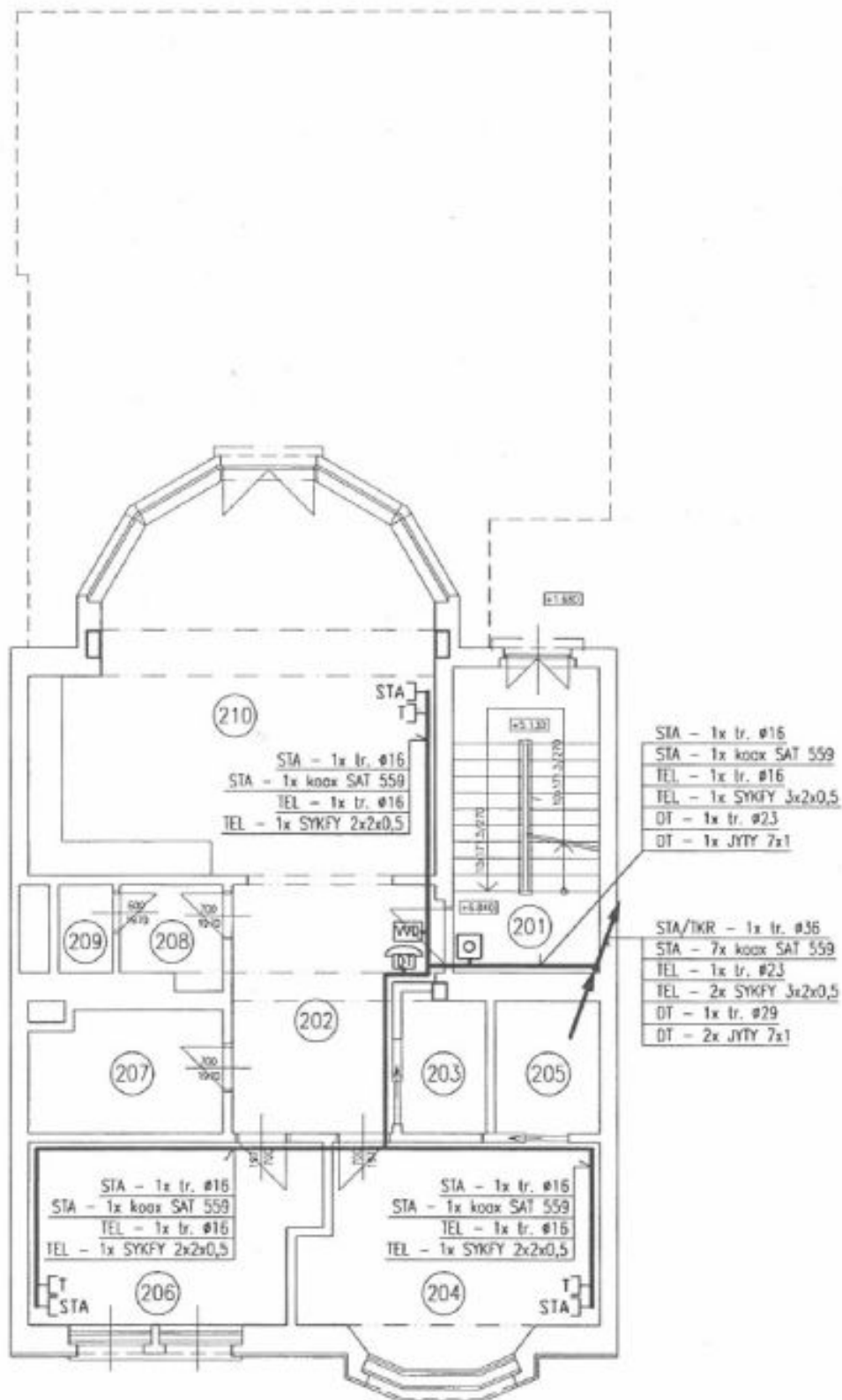




House Eleven-bedroom (12+1)

Ask for price

376 m², Prague 6, Dejvice, Fetrovská





House Eleven-bedroom (12+1)

376 m², Prague 6, Dejvice, Fetrovská

Ask for price

