

**Office space**

Prague 5, Smíchov, Nádražní

**€ 16.70 / m<sup>2</sup> | CZK 416 / m<sup>2</sup>**

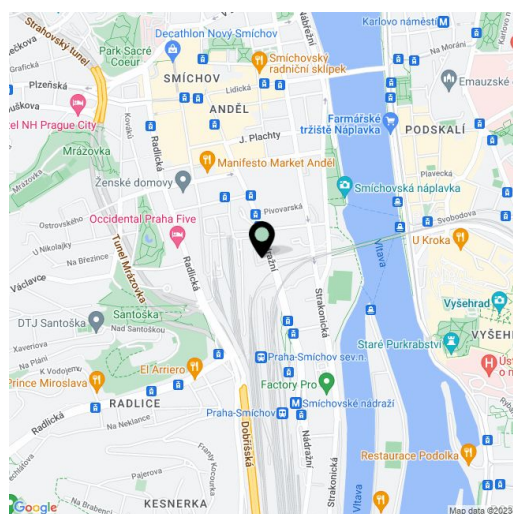
<b>Service price</b>	100 CZK monthly per m <sup>2</sup>
<b>Available area</b>	511 m <sup>2</sup>
<b>Cellar</b>	-
<b>Parking</b>	EUR 150 / ps / month
<b>PENB</b>	G
<b>Reference number</b>	20016

Office premises for lease on the 2nd floor of an administrative building located in Anděl, in close vicinity of one of the Prague's shopping centres. Very good accessibility by car and public transportation – metro station Anděl (line B) is located just below the building, in close vicinity of number of tram stops, bus and train station.

**Features and Services:**

Flexible floor plan – open space or separate offices. Features include raised floors, carpets, interior sunblinds and storage. There is an entrance with a reception desk, 24-hour security and professional property management. Parking spaces available in the building's underground parking garage.

Rental and service charges listed without VAT. Lessee pays no commission.

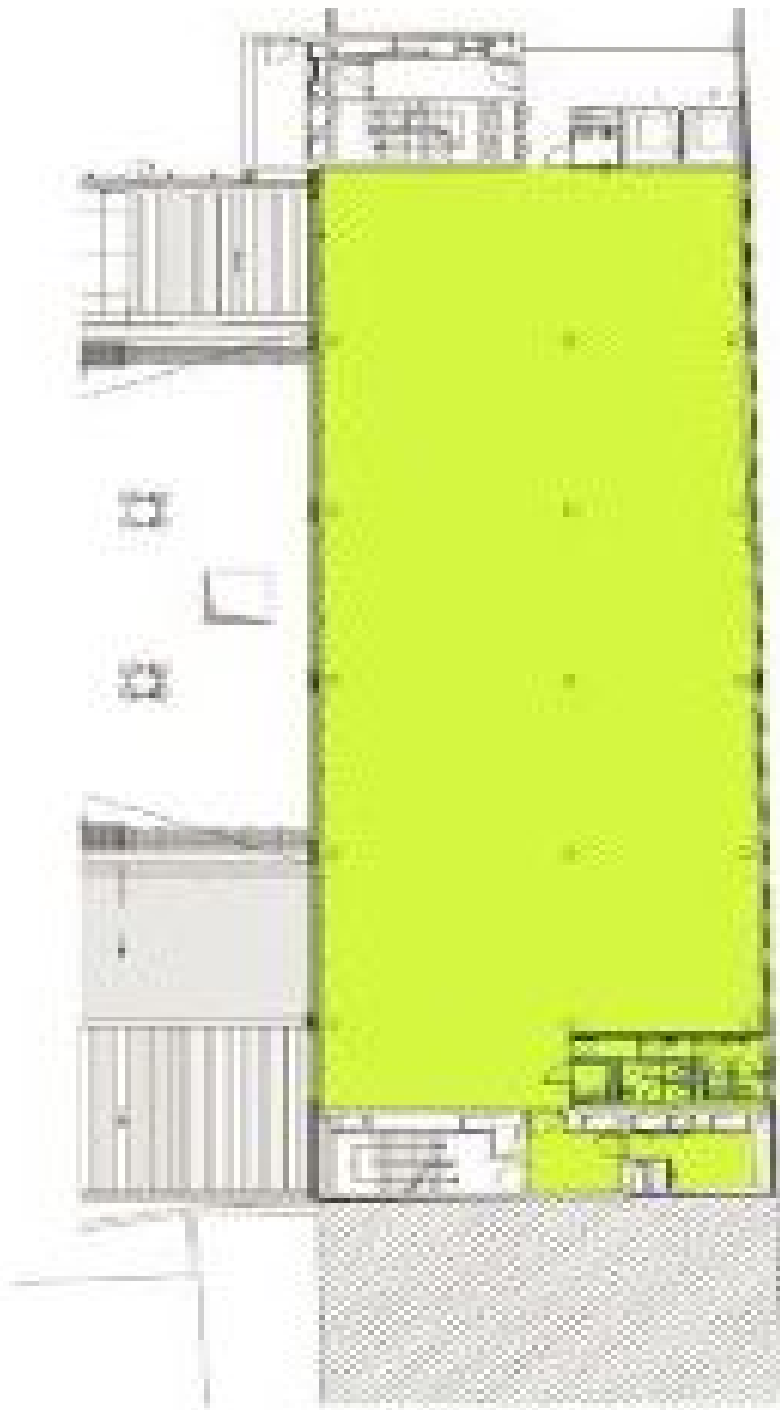




## Office space

Prague 5, Smíchov, Nádražní

€ 16.70 / m<sup>2</sup> | CZK 416 / m<sup>2</sup>



2. patro | 2nd floor