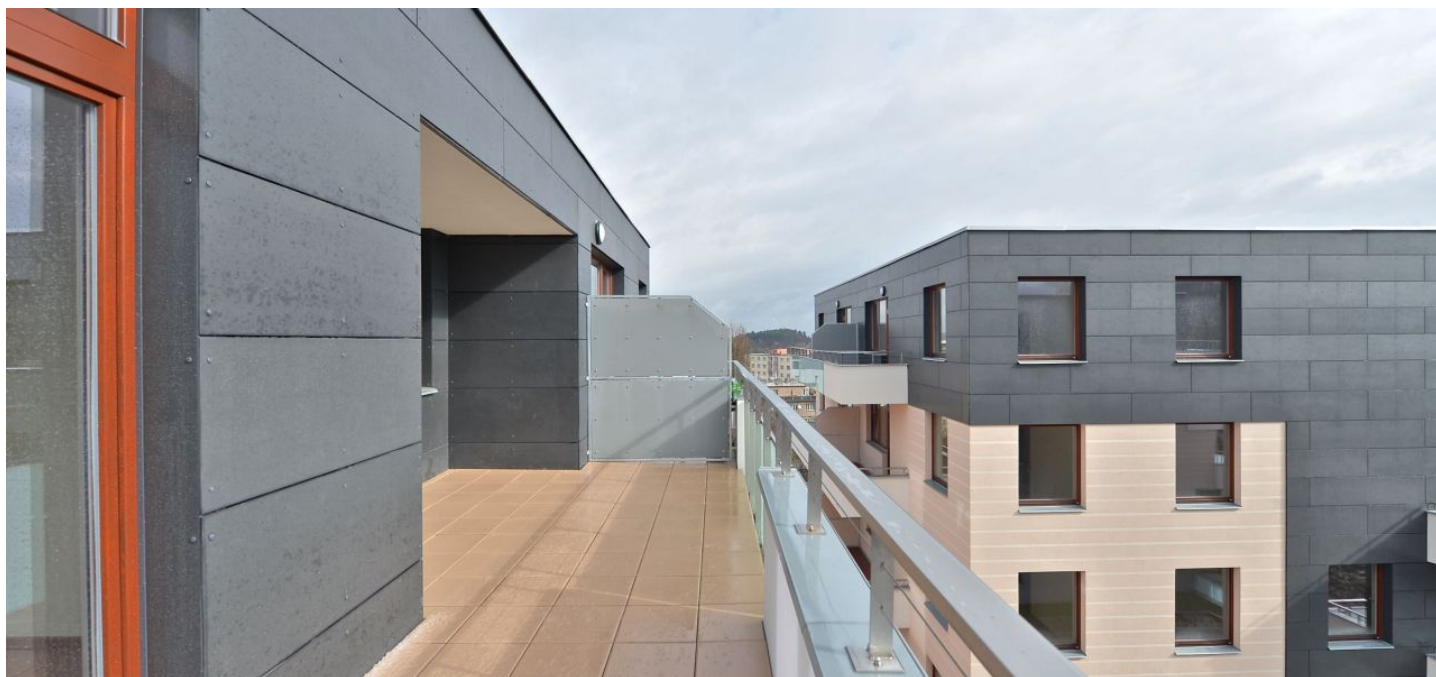




Apartment Three-bedroom (4+kk)

Rented

100 m², Prague 6, Veleslavín, Pod Dvorem





Apartment Three-bedroom (4+kk)

Rented

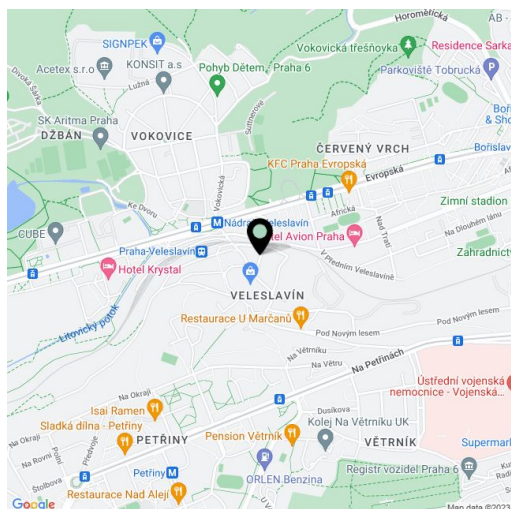
100 m², Prague 6, Veveslavín, Pod Dvorem

Total area	120 m ²
Floor area*	100 m ²
Terrace	20 m ²
Parking	Garage parking.
Garage	Yes
Cellar	Yes
PENB	G
Reference number	20022
Available from	Immediately

Modern unfurnished 3-bedroom 2-bathroom flat with a terrace and balcony (total of 20m²) on the fourth floor with lift in a residential project with parking. Situated next to a park, on the border of Veveslavín and Ořechovka Prague residential areas, with quick access to the city center (metro, trams). Green and quiet location, convenient to the airport and international schools in Prague 6.

The interior includes master bedroom with an en-suite bathroom (shower, toilet), two more separate bedrooms, living room with a fully fitted open kitchen and storage room, second bathroom (tub), guest toilet, laundry room, and entry hall.

Green views, large windows, wooden floors, dishwasher, microwave oven, video entry phone, cellar. One underground garage parking space included. Monthly deposit for common building charges, water and heating CZK 6000. Electricity is billed separately.



* Area of the unit according to the Civil Code. The area consists of the sum total area of the entire unit bounded by perimeter walls.



Apartment Three-bedroom (4+kk)

Rented

100 m², Prague 6, Veleslavín, Pod Dvorem

