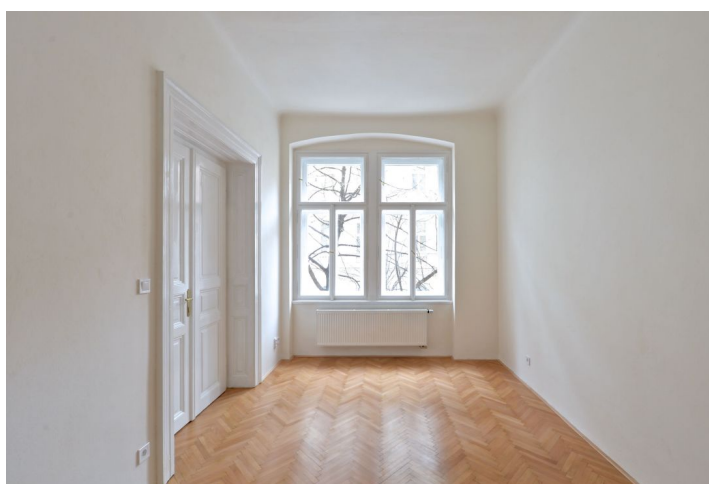




## Apartment One-bedroom (2+1)

Rented

80 m<sup>2</sup>, Prague 2, Vinohrady, Šafaříkova





## Apartment One-bedroom (2+1)

Rented

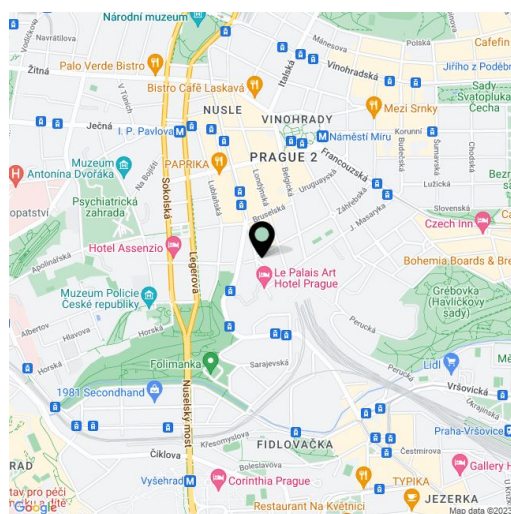
80 m<sup>2</sup>, Prague 2, Vinohrady, Šafaříkova

Total area	80 m <sup>2</sup>
Parking	-
Cellar	-
PENB	G
Reference number	20098
Available from	Immediately

Completely refurbished 1-bedroom flat situated on the first floor of a late 19th century building without a lift, in a central residential district of Prague, Vinohrady. Conveniently located a short walk from Náměstí Míru and I.P.Pavlova metro stations and trams, about a 20 minute walk to Wenceslas Square. Guaranteed tranquility despite the central location.

The interior includes a fully fitted eat-in kitchen, a corner living room, one bedroom, a walk-through walk-in closet, bathroom with tub, a separate toilet, and entry hall.

Preserved original features, high ceilings, large windows, solid wood parquet floors, high quality floating floor, double interior doors, gas boiler, dishwasher, microwave oven, audio entry phone. Common building charges and water CZK 500/person/month. Gas and electricity will be transferred to the tenant. Available from November 2020.



\* Area of the unit according to the Civil Code. The area consists of the sum total area of the entire unit bounded by perimeter walls.