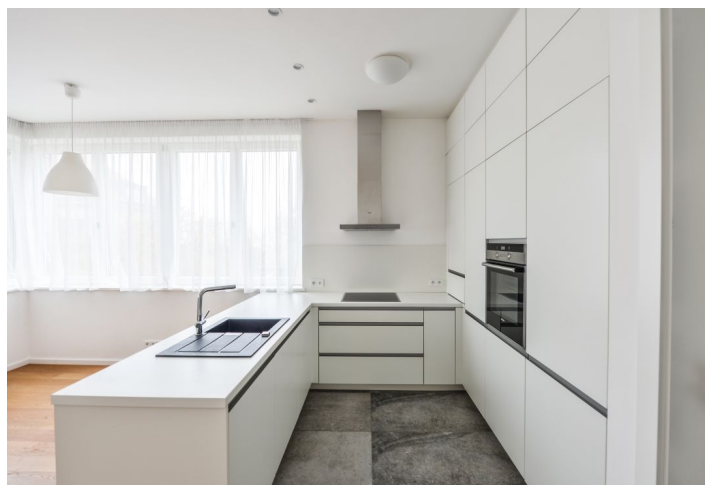




## Apartment Three-bedroom (4+kk)

Rented

108 m<sup>2</sup>, Praha 6, Střešovice, Na Dračkách





## Apartment Three-bedroom (4+kk)

Rented

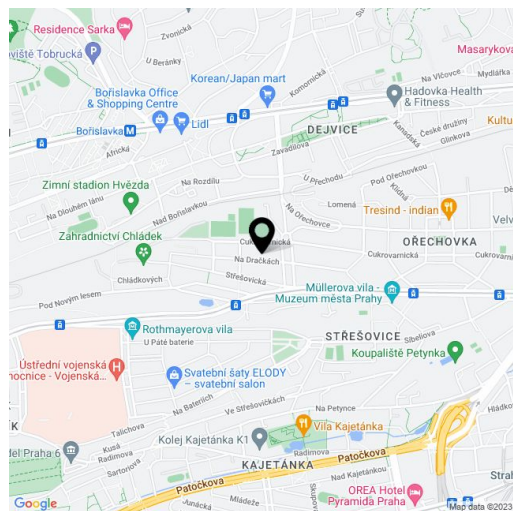
108 m<sup>2</sup>, Praha 6, Střešovice, Na Dračkách

Total area	164 m <sup>2</sup>
Floor area*	108 m <sup>2</sup>
Terrace	56 m <sup>2</sup>
Parking	-
Cellar	-
PENB	G
Reference number	20169
Available from	Immediately

Benefiting from a 56 m<sup>2</sup> terrace, this completely refurbished 3-bedroom flat is situated on the ground floor of a renovated villa with a landscaped garden. Located in the heart of the exclusive and highly sought after Ořechovka residential neighborhood with grand villas and lots of greenery, within easy reach of the Prague Castle. Convenient to international schools, very good connection to the city center and the airport, a few minutes from Dejvická and Hradčanská metro and Park Lane International School.

The interior features three spacious separate bedrooms, a living room with a fully fitted and equipped open plan kitchen and a dining area, a bathroom with a bathtub and a toilet, an additional guest toilet, and an entrance hall.

**Oak floors**, Italian tiles, underfloor heating, built-in wardrobe, gas boiler, dishwasher, alarm, satellite TV connection. Easy parking on the street. Common building charges and utilities are billed separately: approx. CZK 4500 per month.



\* Area of the unit according to the Civil Code. The area consists of the sum total area of the entire unit bounded by perimeter walls.