



Apartment Two-bedroom (3+1)

Sold

105 m², Prague 7, Holešovice, Tusarova





Apartment Two-bedroom (3+1)

Sold105 m², Prague 7, Holešovice, Tusarova

Total area	127 m ²
Floor area*	105 m ²
Terrace	22 m ²
Parking	-
Cellar	Yes
PENB	G
Reference number	20179

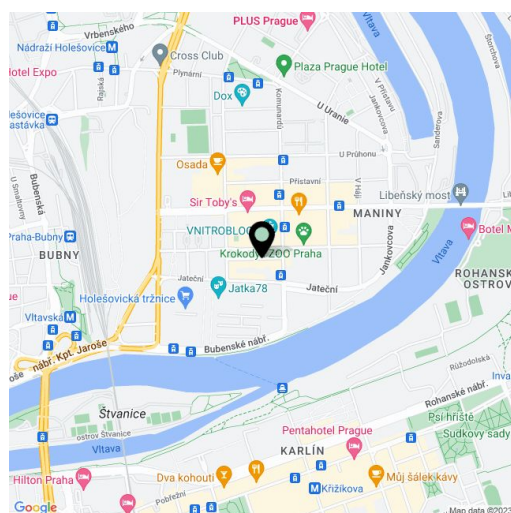
New split-level attic flat with 2 terraces on the 6th floor of a reconstructed apartment building with a lift, currently undergoing a reconstruction, situated in a dynamically developing part of Prague 7 - Holešovice, right in front of a park, only a few steps from a tram stop and 5 minutes to metro Vitavská.

The layout of the lower level comprises of a large entrance hall, open-plan living room with dining area, kitchen, 2 bedrooms, bathroom and separate toilet; all main rooms have access to the terrace facing the green courtyard. The stairs in the living room lead to the gallery in the upper level, with plenty of room for work space, and a second terrace.

Oak floorboards, Ragno Concept floor and wall tiles, **large format windows**, Laufen bathroom fittings, preparation for kitchen. The purchase price includes a **cellar**.

The house is situated in an **attractive location near the riverbank**, in the vicinity of the Rock Opera theater, a kindergarten, school, supermarket, sports and medical facilities and restaurants. 5 minutes to the fitness club or a squash hall, 10 minutes to CZ Golf golf course in Libeň, 10 minutes to the center.

Interior 105.6 m², balcony 12.2 m², terrace 10 m², cellar.



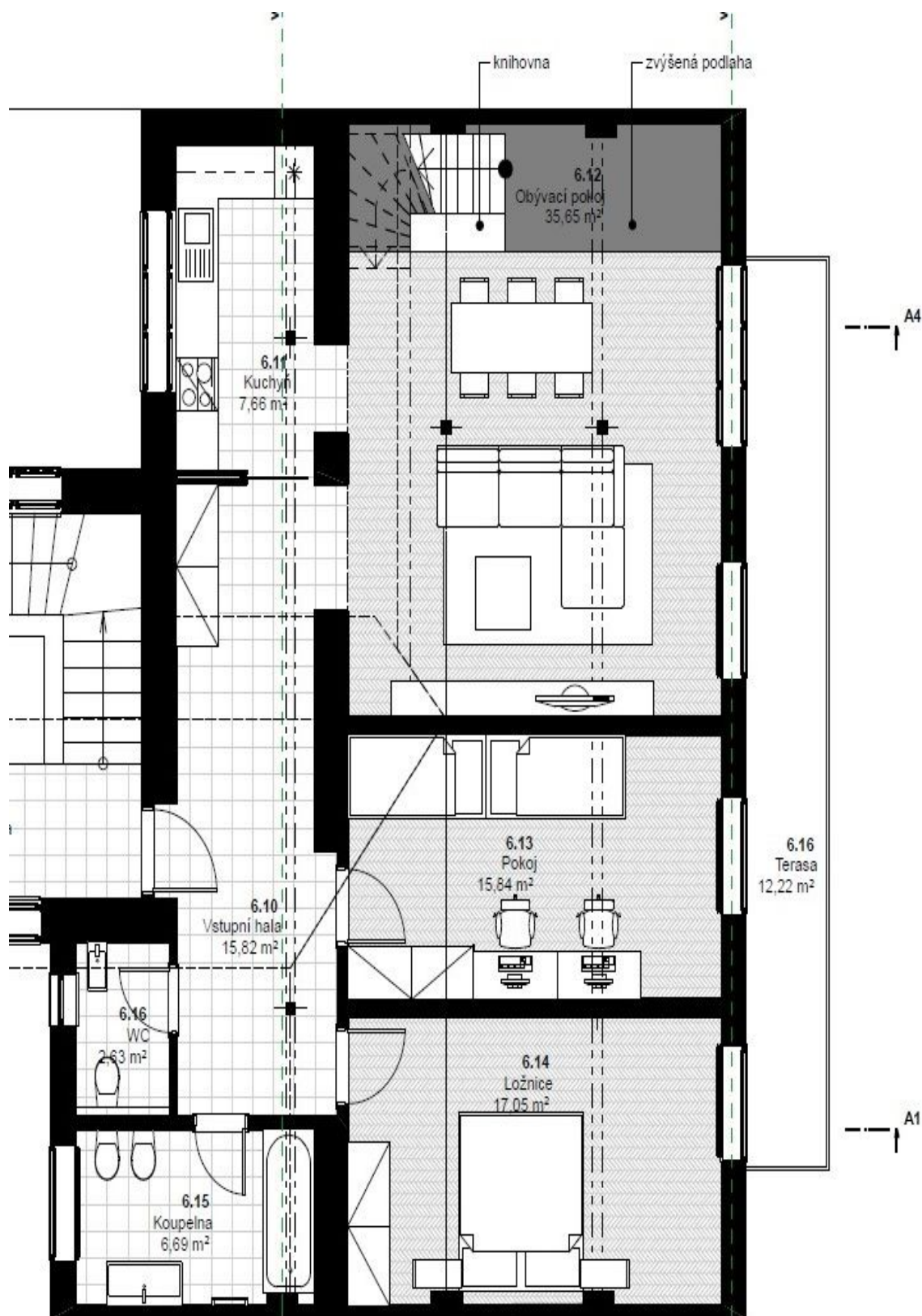
* Area of the unit according to the Civil Code. The area consists of the sum total area of the entire unit bounded by perimeter walls.



Apartment Two-bedroom (3+1)

105 m², Prague 7, Holešovice, Tusarova

Sold





Apartment Two-bedroom (3+1)

105 m², Prague 7, Holešovice, Tusarova

Sold

